

PreCONNECT® TRUNK MULTIJUMPER

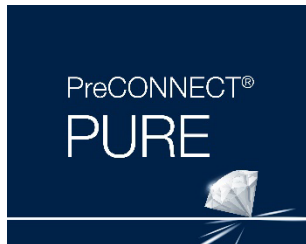
PRODUCT INFORMATION



PreCONNECT® TRUNK MULTIJUMPER solution is available in two end face quality features: BASIC and PURE**Define the end-face quality according to your application requirements:**

Quality feature BASIC is our well-proven, high-grade, standards compliant product in terms of end-face geometry, defect, and cleanliness, providing excellent IL and RL performance:

1. The PreCONNECT® factory-assembled plug & play system enables quick and reliable, cost efficient, installation and performance
2. Harmonized modular components of the quality feature BASIC solution ensure end to end performance of the entire channel



Quality feature PURE is the enhanced version of our quality feature BASIC, but with more stringent defect and cleanliness screening and factory sealed, tamper evident adapter-interfaces.

3. Guaranteed protection of the polished connector end-face against contamination and damage through sealed adapter-interfaces, enabling time savings during initial installation and commissioning due to the elimination of the need for cleaning and testing*/**.
4. Quality feature PURE provides an industry leading low random mate insertion and return loss (mean) which enables up to six (6) mated pairs in a 10G/OM4 application up to 300m.

Part numbers:

Quality feature BASIC: The part numbers XXXAXXXX listed in this document are valid for the BASIC quality feature.

Quality feature PURE: Add a "P" to the end of the quality feature BASIC part number (*Example: XXXAXXXXP*)

(Note: PURE trunk cables have factory attached sealed coupling adapters incorporated and thus utilize empty patch panels and enclosures)

** While Rosenberger does not require permanent link or channel testing for warranty registration of PURE installations due to guaranteed performance, certain customers will require testing documentation for their records.*

*** Only applicable when all components are of quality feature PURE and installed by trained PURE installers.*

Applications:

Cabling of large switches and floor-standing IT hardware within data centers, to represent their ports in a patch location

System consists of:

- Factory assembled FO loose tube cables, FRNC-LSZH indoor and universal cables, up to 144 fibers
- With connector systems LC, SC, E2000® and MTP® at application specific leg-lengths
- Special 19" Panels represent the ports of dedicated IT hardware
- Suitable Patchcords
- Useful accessories
- Patch Location Rack

Features:

- Representation of IT hardware ports in a patch locations
- Lengths of the connector legs can be ordered application specific

Your benefits at a glance:

- Cost reduction through direct attach of the IT Hardware Transceivers the TMJ connector legs
- Attenuation reduction through the saving of one connection in the transmission channel
- Application specific individually configurable
- Fast and safe installation through factory assembled Plug & Play systematic
- Highest quality and cost-efficiency through factory assembling
- PreCONNECT® cabling systems consist of perfectly harmonized modular single components



PreCONNECT®
trunk multijumper



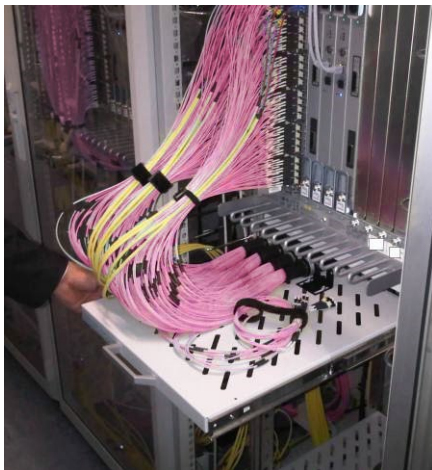
modular
19" panel systems
SMAP-G2 SD



patchcords



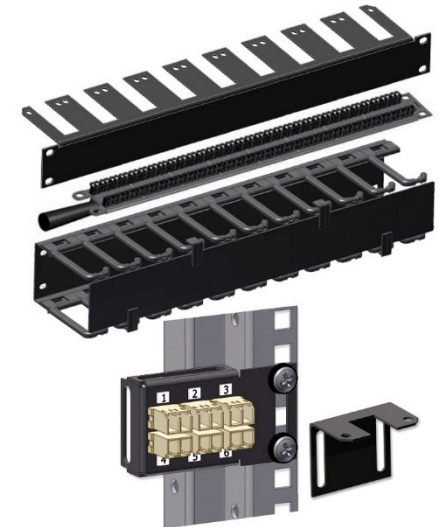
cable divider drawer



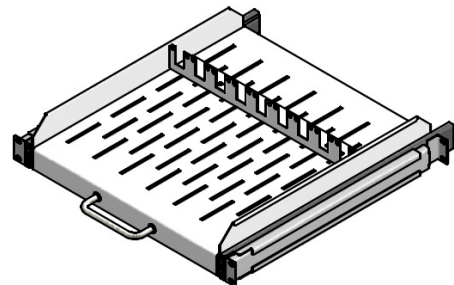
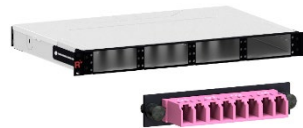
patch location rack



accessories



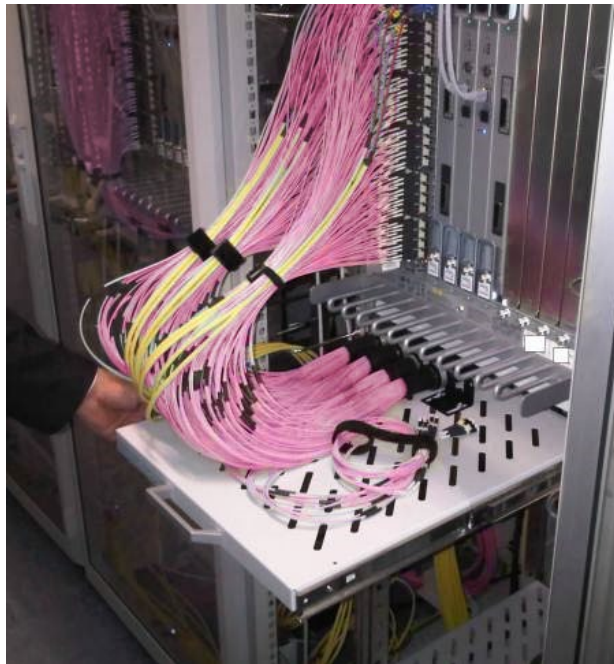
SMAP-G2 HD and UHD



Applications:

Cabling of large switches and floor-standing IT hardware within data centers, to represent their ports in a patch location.

- **Trunk multijumper up to 144 fibers per Trunk**
- **Cost and attenuation optimized**
- **Focused on the useful and necessary**

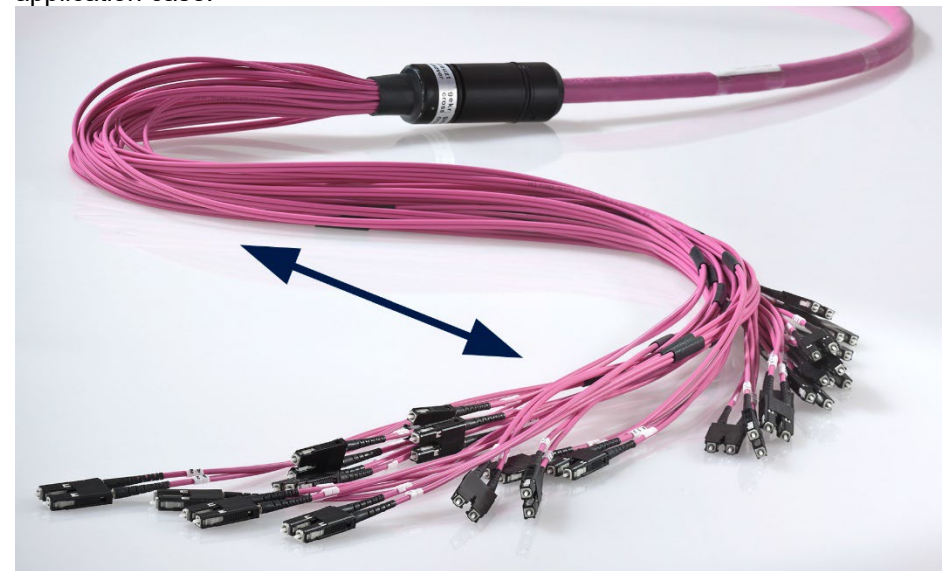


System description:

Our PreCONNECT® TRUNK MULTIJUMPER cabling system consists of:

- Trunk multijumper TMJ called factory assembled FO loose tube cables up to 144 fibers, can be ordered with application specific „variable“ long connector legs:
 - Duplex connectors at 2x2.1 mm Zipcord fanouts, leg lengths up to max. 3 m possible
 - Compact connectors at 2,9 mm round fanouts, leg lengths up to max. 5 m possible
- Cable Divider Drawer, to be mounted below the switch to install the TMJ Cable Dividers
- a large variety of patchcords and accessories
- and Patch Location Racks

TMJ types with hybrid connector legs, „standard stepped“ at the patch location side A, fitting for the explicitly therefor developed 19” Panel systems, and leg lengths fitting for the to be attached hardware at side B, is the most common application case.



Properties:

Both cable ends of the PreCONNECT® TRUNK MULTIJUMPER are molded within the cable dividers.

Rosenberger OSI brought already 1991 high fibercount factory assembled FO Trunk cables to the market. PreCONNECT® STANDARD was the first in Europe developed and manufactured, high fibercount and modular „Plug-and-Play“ FO cabling system.

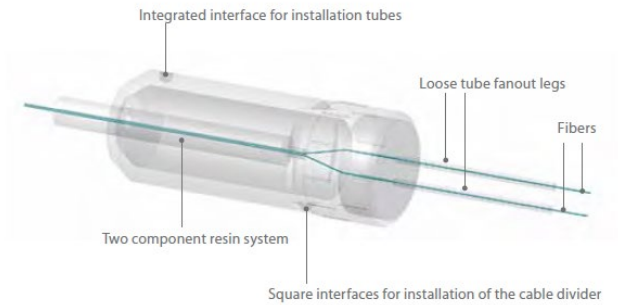
The PreCONNECT® cable divider is a splice-less furcation to separate the fibers of loose tube cables. He is one of the mechanically and thermally most robust cable dividers for loose tube cables at smallest diameters. With its integrated PreCONNECT® square interface, the cable divider can be tool-less hooked into PreCONNECT® Panels for tensile and torsion resistant fixing of the Trunks.

Coding/polarity: The connector legs are alpha numerical uniquely coded. The standard polarity is „channelwise crossed“ (pairwise flipped) for full-duplex transmission systems – A1 to B1, A2 to B2, etc. On request „uncrossed“ deliverable.

Installation protection: The package of application specific „variable“ legs is a not pull resistant dust-proof foil tube.

On „standard stepped“ legs you can select:

- dust-proof foil tube
- and 600 N tensile-strength, crush and kink resistant, IP50 dust-proof indoor-installation-tube



Properties:

Length definition:

- Order-length = length between the connectors of the longest legs at both sides, not between the PreCONNECT® cable dividers.
- Possible order-lengths: From 5 to 2000 meter

Length tolerances:

Trunk length	Tolerance
<= 10m	+/- 50cm
> 10m <= 30m	+/- 100cm
> 30m <= 100m	+/- 150cm
> 100m	+/- 2%

Delivery form: Dependent on the length as cable ring or on cardboard or wooden drum, 100% IL factory measured with measurement protocol, installation manual, product label with serial number on both sides.

Standard stepped “A“ and “E“ leg lengths and installation tube diameters of PreCONNECT® TRUNK MULTIJUMPER, all types of connectors except SC-Duplex ²⁾ Steps channel/fiber 1 to n: 1 = long, n = short									
Number of channels/fibers	4/8	6/12	8/16	12/24	18/36	24/48	36/72	48/96	72/144
“A” leg lengths stepped from to [cm] ¹⁾	45 to 75	45 to 75	45 to 73	45 to 89	45 to 70	45 to 89	45 to 70	45 to 70	45 to 75
“E” leg lengths stepped from to [cm] ¹⁾	77 to 107	77 to 107	77 to 105	77 to 121	77 to 102	77 to 121	77 to 102	77 to 102	77 to 107
Outer diameter installation tube IP50 Indoor and IP67 Outdoor [mm]	30	30	30	30	40	40	55	75	75

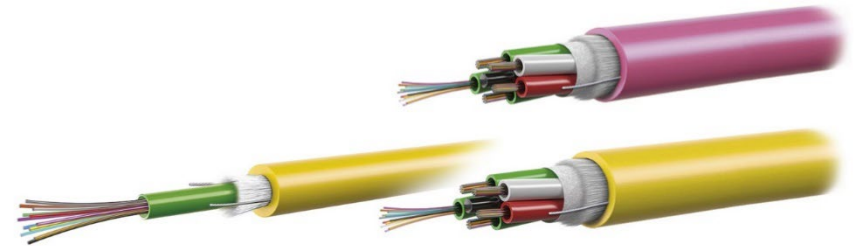
¹⁾ Production tolerance – 5 cm / ²⁾ Installation tube diameter of trunks with SC-Duplex on request

Properties:

Trunk cable types:

PreCONNECT® TRUNK MULTIJUMPER are deliverable with all common loose tube cables up to 144 fibers, mostly used:

- Indoor cable I-B(ZN)BH, CPR class B2ca
 - Universal cable U-DQ(ZN)BH, CPR class Dca or Cca dependent on stock
- Cable data, see separate cable data sheets.

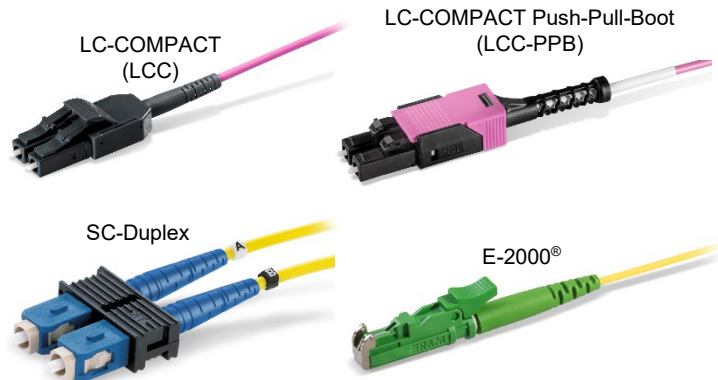


Fiber types:

With all common fiber types deliverable.
 Bend-insensitive fibers by default.
 Fiber data, see separate fiber data sheets.

Connector types:

With all common connector types deliverable.
 Connector data, see separate connector data sheets.

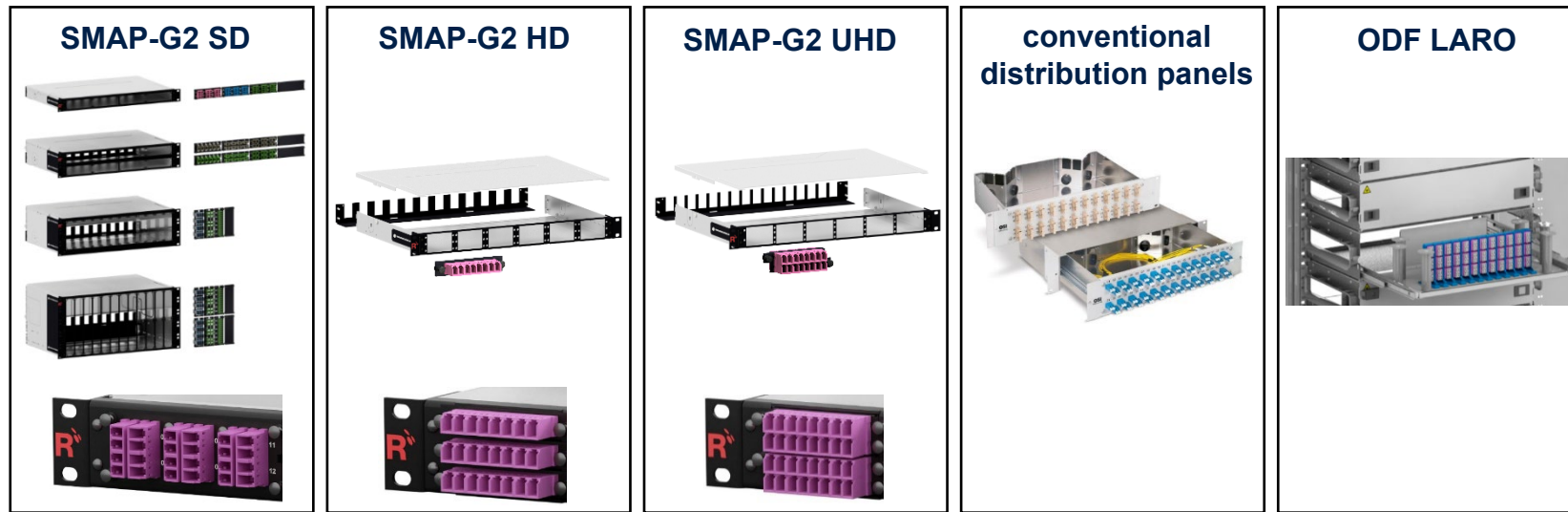


With MTP® OCTO 4+4 fiber and DUODECIM 12 fiber on request



Application of PreCONNECT® TRUNK MULTIJUMPER and Patchcords with LC-COMPACT (LCC) and LC-COMPACT Push-Pull-Boot (LCC-PPB) in our 19" panel systems and Trunk leg lengths :

19" panel systems	LC-Duplex port density per HU	Trunks with LCC	Trunks with LCC-PPB	Patchcords with LCC	Patchcords with LCC-PPB	Trunk leg lengths
SMAP-G2 SD	48	✓	✗	✓	✗	standard stepped "A length legs"
SMAP-G2 HD	72	✓	recommended	✗	✓ required	
SMAP-G2 UHD	96	✗	✓ required	✗	✓ required	
Conventional	24	✓	✗	✓	✗	standard stepped "A length legs"
ODF LARO	144 in 5 ETSI HU	✓	recommended	✗	✓ required	extended stepped "E length legs"



LC-COMPACT (LCC)



LC-COMPACT Push-Pull-Boot (LCC-PPB)



PreCONNECT® TRUNK MULTIJUMPER
with indoor cable I-B(ZN)BH, CPR class B2ca:



With application specific „variable“ long connector legs:

- Duplex connectors at 2x2.1 mm Zipcord fanouts, leg lengths up to max. 3 m possible
- Compact connectors at 2,9 mm round fanouts, leg lengths up to max. 5 m possible

Part numbers				
Channels/Fibers	Connectors on both sides	SM PC 0	SM APC 8°	OM4
4/8	LC-COMPACT	049A1928G657A1	on request	049A1927OM4
6/12	LC-COMPACT	049A1909G657A1	049A1908G657A1	049A1917OM4
12/24	LC-COMPACT	049A1926G657A1	049A1938G657A1	049A1918OM4
16/32	LC-COMPACT	049A0849G657A1	on request	049A1916OM4
24/48	LC-COMPACT	049A1902G657A1	049A1937G657A1	049A1912OM4
32/64	LC-COMPACT	on request	on request	049A1910OM4
36/72	LC-COMPACT	049A1903G657A1	on request	049A1913OM4
48/96	LC-COMPACT	049A1904G657A1	on request	049A1914OM4
64/128	LC-COMPACT	049A1958G657A1	on request	049A1964OM4
72/144	LC-COMPACT	049A1959G657A1	on request	049A1915OM4

Technical data of connectors, fibers and cables on request via the product profile of your selected trunk multijumpers.

PreCONNECT® SMAP-G2 Standard Density (SD) 19" panel system:

Port density:

- 48 LC-Duplex ports per HU at the 1, 2 and 3 HU panels and 57.6 per HU (total 288) at the 5 HU panel

Dimensions:

- Width: 19"
- Height: 1, 2, 3 and 5 HU
- Depth: 200 mm and 300 mm, see product information SMAP-G2 SD

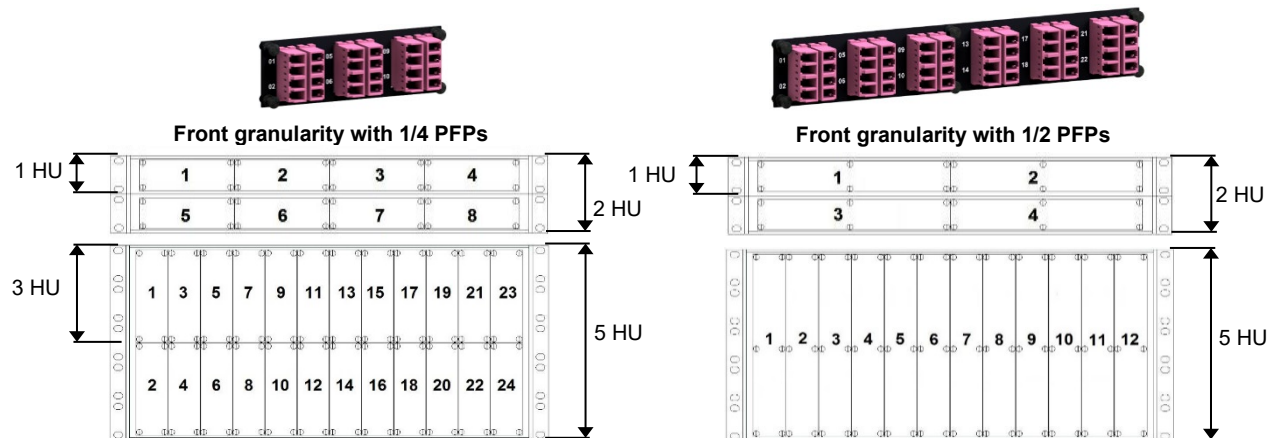
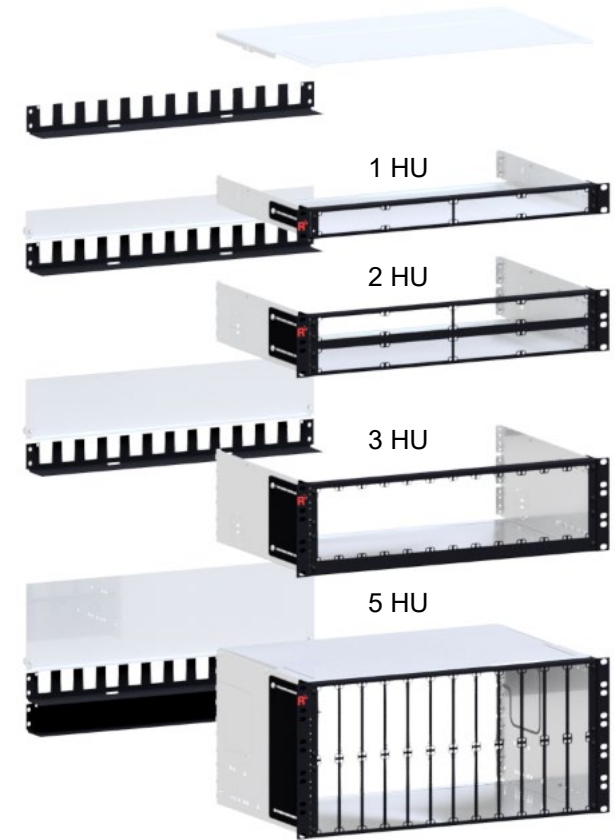
Part numbers:

SMAP-G2 SD empty distribution panels, RAL9005 black, back plane with 12 PreCONNECT® square interfaces:

1 HU, depth 300 mm	171A0001
1 HU, depth 200 mm	171A0020
2 HU, depth 300 mm	172A0001
3 HU, depth 300 mm	173A0001
5 HU, depth 300 mm	175A0001

Find panels with other back plane configurations and further information in our product information SMAP-G2 SD.

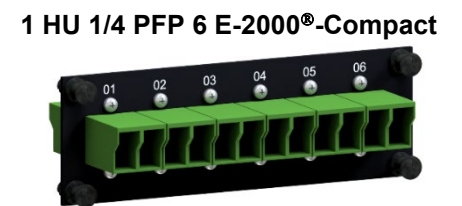
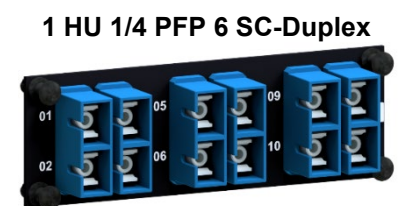
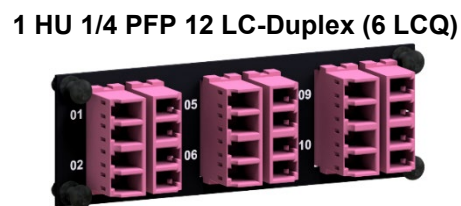
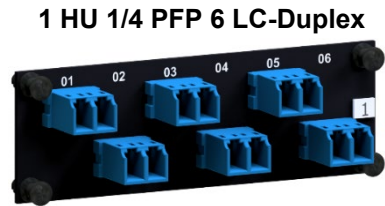
SMAP-G2 SD panels for PURE trunks are described behind in this document.



SMAP-G2 SD 1 HU 1/4 part front plates with matrix numbering:

Part numbers RAL9005 black			
Number of adapter type/fibers	for fiber type		
	SM PC 0° blue	SM APC 8° green	OM4 violet
Blind PFP	170A0001		
6 LC-Duplex / 12F	170A0110	170A0120	170A0130OM4
12 LC-Duplex (6 LCQ) / 24F	170A0210	170A0220	170A0230OM4
6 SC-Duplex / 12F	170A0410	170A0420	170A0430OM4
6 E-2000®-Compact / 12F	170A0510	170A0520	---

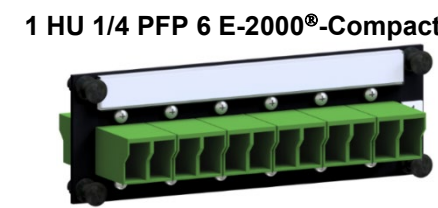
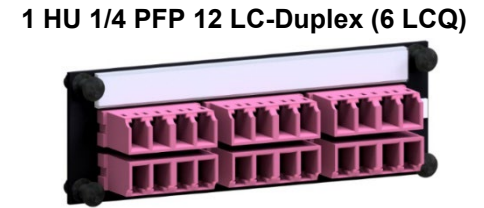
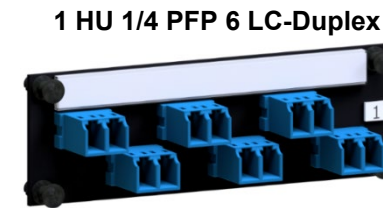
Find part numbers for panels factory assembled with part front plates in our product information SMAP-G2 SD.



SMAP-G2 SD 1 HU 1/4 part front plates with labelling field:

Part numbers RAL9005 black			
Number of adapter type/fibers	for fiber type		
	SM PC 0° blue	SM APC 8° green	OM4 violet
6 LC-Duplex / 12F	170A3110	170A3120	170A3130OM4
12 LC-Duplex (6 LCQ) / 24F	170A3210	170A3220	170A3230OM4
6 E-2000®-Compact / 12F	170A0510	170A0520	---

Find part numbers for panels factory assembled with part front plates in our product information SMAP-G2 SD.



SMAP-G2 SD 1 HU 1/2 part front plates with matrix numbering:

Part numbers RAL9005 black			
Number of adapter type/fibers	for fiber type		
	SM PC 0° blue	SM APC 8° green	OM4 violet
Blind PFP	170A0002		
12 LC-Duplex / 24F	170A0150	170A0160	170A0170OM4
24 LC-Duplex (12 LCQ) / 48F	170A0250	170A0260	170A0270OM4
12 SC-Duplex / 24F	170A0450	170A0460	170A0470OM4
12 E-2000®-Compact / 24F	170A0550	170A0560	---

Find part numbers for panels factory assembled with part front plates in our product information SMAP-G2 SD.

1 HU 1/2 Blind PFP



1 HU 1/2 PFP 12 LC-Duplex



1 HU 1/2 PFP 24 LC-Duplex (12 LCQ)



1 HU 1/2 PFP 12 SC-Duplex



1 HU 1/2 PFP 12 E-2000®-Compact



PreCONNECT® SMAP-G2 High Density (HD) 19" panel system:

Port density:

- 72 LC-Duplex ports per HU

Dimensions:

- Width: 19"
- Height: 1 HU and 2 HU
- Depth: 200 mm and 300 mm, see product information SMAP-G2 HD

Part numbers:

SMAP-G2 HD empty distribution panels, RAL9005 black, back plane with 12 PreCONNECT® square interfaces:

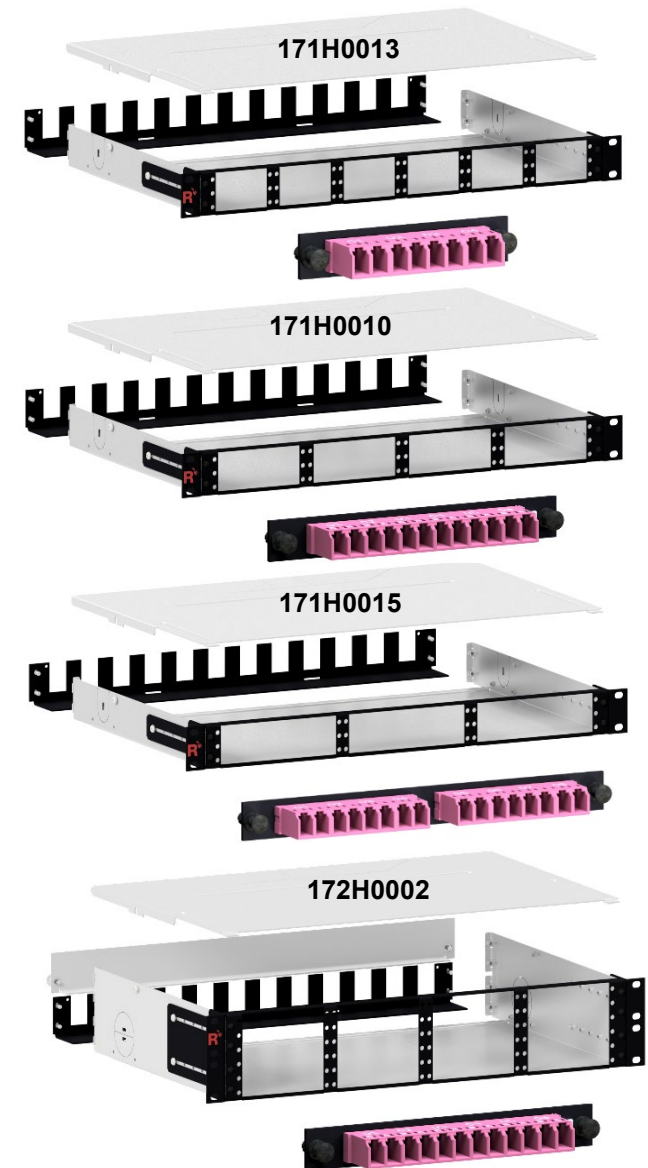
1 HU, 6/6 width partition, depth 300 mm	171H0013
1 HU, 4/4 width partition, depth 300 mm	171H0010
1 HU, 4/4 width partition, depth 200 mm	171H0001
1 HU, 3/3 width partition, depth 300 mm	171H0015
2 HU, 4/4 width partition, depth 300 mm	172H0002
2 HU, 4/4 width partition, depth 200 mm	172H0001

Find panels with other back plane configurations and further information in our product information **SMAP-G2 HD**.

SMAP-G2 HD panels are not appropriate for PURE trunks.

We recommend to apply trunks with LC-COMPACT Push-Pull-Boot (LCC-PPB) in this panel system.

LC-COMPACT Push-Pull-Boot (LCC-PPB) patchcords with cable diameter 2.0 mm or thinner must be used with this panel system, to be found behind in this product information.



SMAP-G2 HD part front plates:

Part numbers RAL9005 black				
PFP Typ	Number of PFP and type	for fiber type		
		SM PC 0° blue	SM APC 8° green	OM4 violet
1/3 HU 1/6	Blind PFP	170H0002		
	4 LC-Duplex (1 LC8) / 8F	170H2100	170H2101	170H2102OM4
1/3 HU 1/4	Blind PFP	170H0001		
	6 LC-Duplex (1 LC12) / 12F	170H2000	170H2001	170H2002OM4
1/3 HU 1/3	Blind PFP	170H0003		
	8 LC-Duplex (2 LC8) / 16F	170H2202	170H2203	170H2002OM4

Find part numbers for panels factory assembled with part front plates in our product information SMAP-G2 HD.

1HU front granularity 6/6 width partition

1	4	7	10	13	16
2	5	8	11	14	17
3	6	9	12	15	18

1HU front granularity 4/4 width partition

1	4	7	10
2	5	8	11
3	6	9	12

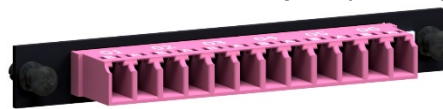
1HU front granularity 3/3 width partition

1	4	7
2	5	8
3	6	9

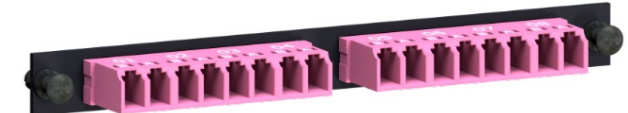
1/3 HU 1/6 PFP 4 LC-Duplex (1 LC8)



1/3 HU 1/4 PFP 6 LC-Duplex (1 LC12)



1/3 HU 1/3 PFP 8 LC-Duplex (2 LC8)



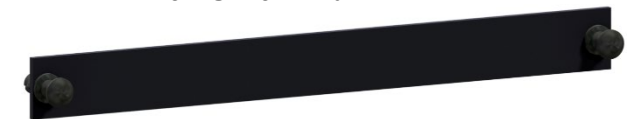
1/3 HU 1/6 Blind PFP



1/3HU 1/4 Blind PFP



1/3 HU 1/3 Blind PFP



PreCONNECT® SMAP-G2 Ultra High Density (UHD) 19” panel system:

Port density:

- 96 LC-Duplex ports per HU

Dimensions:

- Width: 19"
- Height: 1 HU
- Depth: 200 mm and 300 mm, see product information SMAP-G2 UHD

Part numbers:

SMAP-G2 UHD empty distribution panels, RAL9005 black, back plane with 16 PreCONNECT® square interfaces:

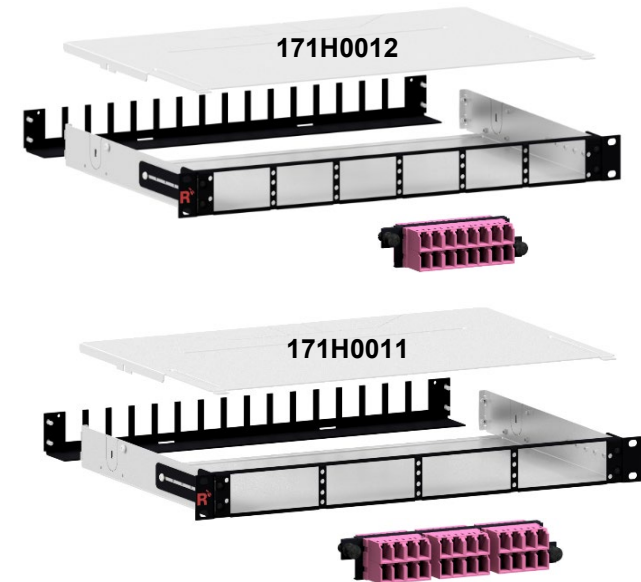
1 HU, 6/6 width partition, depth 300 mm	171H0012
1 HU, 4/4 width partition, depth 300 mm	171H0011

Find panels with other back plane configurations and further information in our product information SMAP-G2 UHD.

SMAP-G2 UHD panels are not appropriate for PURE trunks.

Trunks with LC-COMPACT Push-Pull-Boot (LCC-PPB) must be applied in this panel system.

LC-COMPACT Push-Pull-Boot (LCC-PPB) patchcords with cable diameter 2.0mm or thinner must be used with this panel system, to be found behind in this product information.



SMAP-G2 UHD part front plates:

Part numbers RAL9005 black				
PFP Typ	Number of PFP and type	for fiber type		
		SM PC 0° blue	SM APC 8° green	OM4 violet
1/2 HU 1/6	Blind PFP	170H3002		
	8 LC-Duplex (2 LC8) / 16F	170H6100	170H6101	170H6102OM4
1/2 HU 1/4	Blind PFP	170H3001		
	12 LC-Duplex (6 LCQ) / 24F	170H6000	170H6001	170H6002OM4

Find part numbers for panels factory assembled with part front plates in our product information SMAP-G2 UHD.

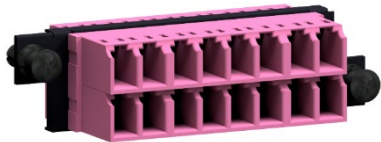
1HU front granularity 6/6 width partition

1	3	5	7	9	11
2	4	6	8	10	12

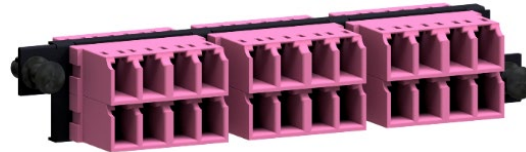
1HU front granularity 4/4 width partition

1	3	5	7
2	4	6	8

1/2 HU 1/6 PFP 8 LC-Duplex (2 LC8)



1/2 HU 1/4 PFP 12 LC-Duplex (6 LCQ)



1/2 HU 1/6 Blind PFP

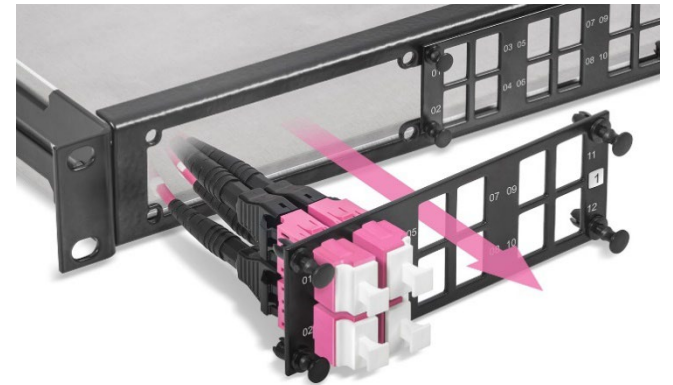


1/2 HU 1/4 Blind PFP



SMAP-G2 SD PURE
19" distribution panels empty:

PreCONNECT® PURE LC-Duplex
adapter-interface
at trunk connector legs

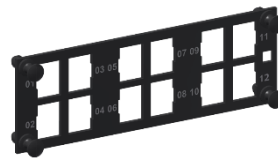


Standard back plane configuration for
max. 12 Trunk cable dividers per panel

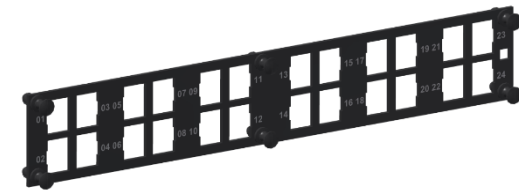


SMAP-G2 SD PURE part-front-plates PFP

1 HU 1/4 PFP for 12 LC-Duplex adapter-interfaces 1 HU 1/2 PFP for 24 LC-Duplex adapter-interfaces



1 HU 1/4 blind-PFP



1 HU 1/2 blind-PFP

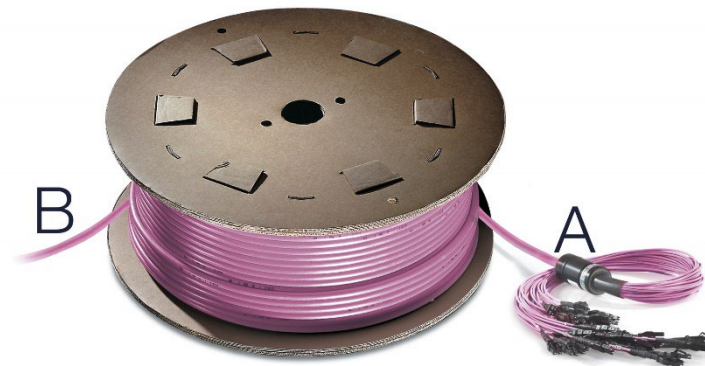
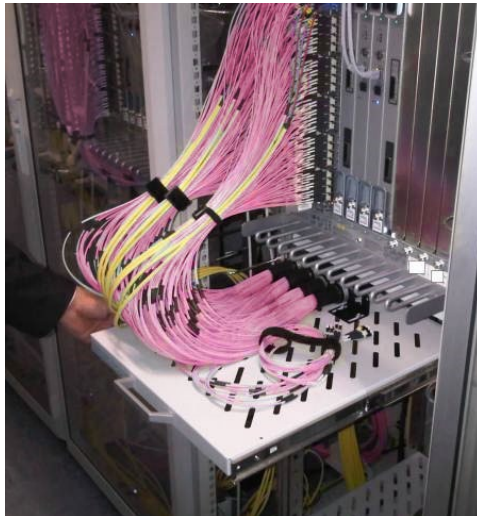


SMAP-G2 SD PURE 1 HU 1/4 and 1/2 part-front-plates part numbers RAL9005 black	
PFP type / number of adapter slots	SMAP-G2 PURE part-front-plates without adapters
1/4 blind-PFP	170A0001P
1/2 blind-PFP	170A0002P
1/4 / 12 LC-Duplex	170A0130P
1/2 / 24 LC-Duplex	170A0170P

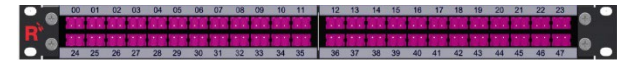
**PreCONNECT® TRUNK MULTIJUMPER
for Brocade DCX switches:**

- With indoor cable I-B(ZN)BH and LC-Compact connectors on both sides
- „standard stepped“ connector legs at the patch location side A fitting for the 19” Panels
- at the switch side B connector leg lengths fitting for the DCX blades

**B Switch side with Cable Divider
Drawer**



**SMAP-G2 19” Panels to represent the switch
ports within the Patch Location Rack**



PreCONNECT® TRUNK MULTIJUMPER for Brocade DCX switches:

- With indoor cable I-B(ZN)BH and LC-Compact connectors on both sides
- „standard stepped“ connector legs at the patch location side A fitting for the 19” Panels
- at the switch side B connector leg lengths fitting for the DCX blades

Part numbers:

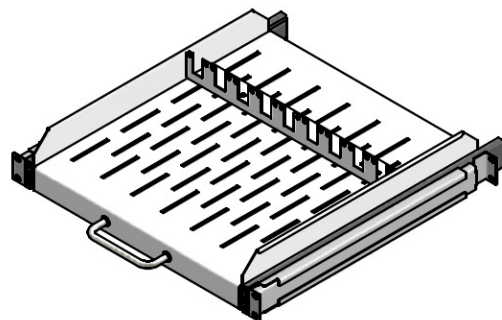
PreCONNECT® TRUNK MULTIJUMPER:

- TMJ for 32 SFP+ port blade: OM3, 33 channels (channel #33 for redundancy) # **050A0008OM3**
- TMJ for 48 SFP+ port blade: OM4, 48 channels, # **050A0005OM4**
- TM J for 64 mSFP+ port blade: OM4, 65 channels (channel #65 for redundancy) # **050A0010OM4**

Other TMJ types on request.

19” 2 HU Cable Divider Drawer:

With 9 PreCONNECT® square-interfaces to install TMJ Cable Dividers below switches.



RAL7035 (light gray) # 142A0516
RAL9005 (black) # 142A0525

Trunk-MJ leg lengths for DCX blades 15 mm steps, manufacturing tolerance – 5 cm

32 SFP+ port blade leg #	48 SFP+ port blade leg #	64 mSFP+ port blade leg #	Leg lengths [mm]
		31 and 63	1165
		30 and 62	1150
		29 and 61	1135
		28 and 60	1120
		27 and 59	1105
		26 and 58	1090
		25 and 57	1075
		24 and 56	1060
15 and 31	23 and 47	23 and 55	1045
14 and 30	22 and 46	22 and 54	1030
13 and 29	21 and 45	21 and 53	1015
12 and 28	20 and 44	20 and 52	1000
11 and 27	19 and 43	19 and 51	985
10 and 26	18 and 42	18 and 50	970
9 and 25	17 and 41	17 and 49	955
8 and 24	16 and 40	16 and 48	940
	15 and 39	15 and 47	925
	14 and 38	14 and 46	910
	13 and 37	13 and 45	895
	12 and 36	12 and 44	880
	11 and 35	11 and 43	865
	10 and 34	10 and 42	850
	9 and 33	9 and 41	835
	8 and 32	8 and 40	820
7 and 23	7 and 31	7 and 39	805
6 and 22	6 and 30	6 and 38	790
5 and 21	5 and 29	5 and 37	775
4 and 20	4 and 28	4 and 36	760
3 and 19	3 and 27	3 and 35	745
2 and 18	2 and 26	2 and 34	730
1 and 17	1 and 25	1 and 33	715
0 and 16	0 and 24	0 and 32	700

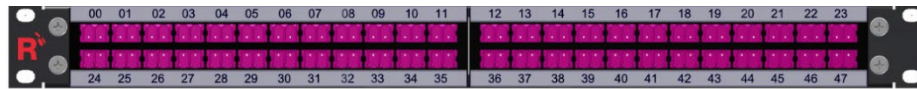
SMAP-G2 19" Distribution Panels to represent DCX ports in a patch location fitting for TMJ leg length side A "standard stepped":

Part numbers:

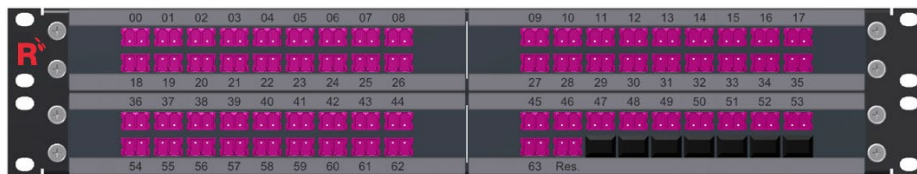
1 HU, 32 channels LC-Duplex OM3: # 746087



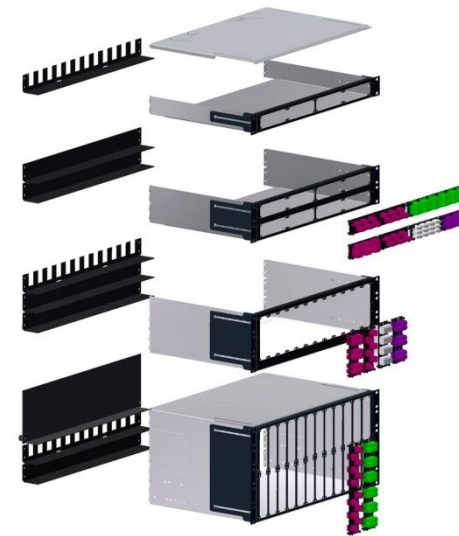
1 HU, 48 channels LC-Duplex OM4: # 753188



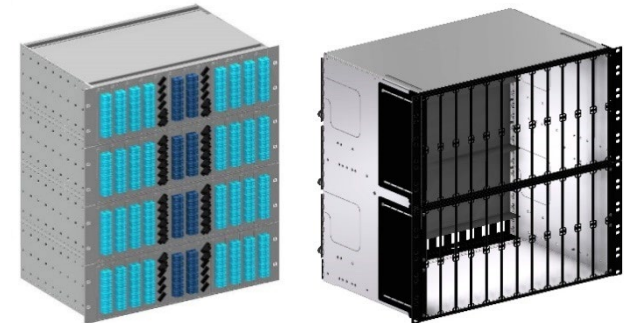
2 HU, 65 channels LC-Duplex OM4: # 745520



SMAP-G2 19" Distribution Panel System



To represent large switches completely within one panel, such large panels are deliverable on request.



Patchcords:

Properties:

- Kink and crush resistance optimized for environmental conditions
- Suitable for operation in temperatures from -10 °C to +60 °C
- Polarity:
Full-duplex cables with duplex connectors on both sides “crossed” A to B in accordance with ISO/IEC 11801 and EN 50173

Length tolerances:

- Up to 1 m = - 50 mm
- 2 m to 3 m = - 100 mm
- 4 m to 25 m = - 200 mm
- Longer than 25 m = - 1 %

Delivery form:

- Attenuation measured in accordance with IEC 61300-3-4 „C“ or „Substitution“ method, measurement values on request
- Serial number labels at the cable ends on both sides
- Individually packaged in foil bags with product ID label

For our SMAP-G2 HD and SMAP-G2 UHD 19“ panel systems only patchcords with diameter 2.0 mm or thinner should be applied.



With LC-COMPACT (LCC) connectors for SMAP-G2 SD 19“ panel system



With LC-COMPACT Push-Pull-Boot (LCC-PPB) connectors for SMAP-G2 HD and UHD 19“ panel system

Part numbers Duplex Patchcord cable type round I-V(ZN)H and I-V(ZN)H(ZN)H FRNC-LSZH					
Cable diameter	Connectors	Length	OM4	SM PC 0°	SM APC 8°
2.0 mm	LC-COMPACT » LC-COMPACT	variable	087A6623OM4	087A6620G657A1	087A6622G657A1
	LC-COMPACT PPB » LC-COMPACT PPB	variable	087A6737OM4	087A6738G657A1	087A6747G657A1
2.8 mm	LC-COMPACT » LC-COMPACT	variable	087A6601OM4	087A6600G657A1	087A6609G657A1
	LC-COMPACT PPB » LC-COMPACT PPB	variable	087A6753OM4	087A6754G657A1	087A6755G657A1
double jacket 2.8 / 5.0mm	LC-COMPACT » LC-COMPACT	variable	087A6613OM4	087A6610G657A1	087A6612G657A1
	LC-COMPACT PPB » LC-COMPACT PPB	variable	087A6759OM4	087A6760G657A1	087A6761G657A1


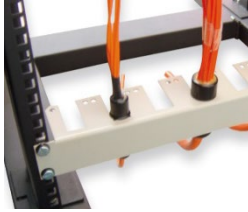



Technical data of connectors, fibers and cables on request via the product profile of your selected patchcords.

Patchcords:



Part numbers Duplex patchcords cable type Zipcord I-V(ZN)H 2 x 2.1 mm FRNC-LSZH			
Connectors	Length	OS2	OM4
LC-Duplex » LC-Duplex	variable	087A5005G657A1	087A5015OM4
LC-Duplex » SC-Duplex	variable	087A5035G657A1	087A5045OM4
Part numbers Duplex patchcords cable type Zipcord I-V(ZN)H 2 x 2.8 mm FRNC-LSZH			
Connectors	Length	OS2	OM4
SC-Duplex » SC-Duplex	variable	062A0180G657A1	062A0160OM4
SC-Duplex » LC-Duplex	variable	087A2068G657A1	087A2078OM4
E-2000® HRL Simplex » E-2000® HRL Simplex	variable	069A2200G657A1	-
Part numbers Duplex patchcords cable type double-jacket flat-breakout I-V(ZN)HH 2 x 2.1 mm FRNC-LSZH			
Connectors	Length	OS2	OM4
LC-Duplex » LC-Duplex	variable	087A1900G657A1	087A1911OM4
LC-Duplex » SC-Duplex	variable	087A2000G657A1	087A2079OM4
E-2000® HRL Simplex » E-2000® HRL Simplex	variable	069A2202G657A1	-
Part numbers Duplex patchcords cable type double-jacket flat-breakout I-V(ZN)HH 2 x 2.8 mm FRNC-LSZH			
Connectors	Length	OS2	OM4
SC-Duplex » SC-Duplex	variable	062A0179G657A1	062A0159OM4
SC-Duplex » LC-Duplex	variable	087A2069G657A1	087A2011OM4
E-2000® HRL Simplex » E-2000® HRL Simplex	variable	069A2201G657A1	-
Technical data of connectors, fibers and cables on request via the product profile of your selected patchcords.			

Accessories:

Description	Part number	Pictures	
<p>19" 1 HU universal trunk cable divider holder</p> <p>For the universal installation of multiple trunk cable dividers within 19" racks.</p>	<p>RAL9005 black 099A0085</p>		
<p>19" 1 HU single universal trunk cable divider holder</p> <p>For the universal installation of a single trunk cable dividers within 19" racks.</p>	<p>RAL9005 black 099A0065</p>		
<p>For 19" panel accessories see our product information 19" panel accessories</p>			

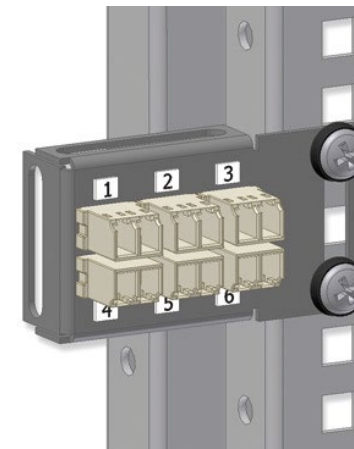
Accessories:

Mini universal adapter brackets

Suitable for installation on 19" bars and for universal mounting.

Properties and delivery form:

- Material: Powder-coated sheet steel
- Color: RAL 9005 (matt black)
- Elongated holes on all sides for universal fixing
- Adapters mounted
- No screw or cage nuts



6 x LC-Duplex

Part number			
Number of Adapters / Adapter type		SM PC 0° blue	OM4 violet
2	LC-Duplex	099A0345	099A0347OM4
4	LC-Duplex	099A0342	099A0344OM4
6	LC-Duplex	099A0340	099A0305OM3

Patch Location Rack:

Applications:

- High-density data center infrastructures
- For the construction of ultra-high-density data center patch locations

Properties:

- Innovative, restriction-free cable management system
- Rack pillars with integrated cable managers to prevent interference with cable routing
- The covers of the cable managers fold in both directions and are completely removable
- Individually selectable feedthroughs in the sides and rear walls of the large-volume cable channel for simple vertical and horizontal cable routing
- Professional routing of large cable volumes from the patchfields and storage of cable overlengths in the vertical cable managers
- Particularly suitable for fiber optic cables thanks to the use of cable clips (L-fingers) and finger slots:
 - The rounded L-fingers ensure that the cables are extremely well protected against bending and kinking even when subject to strain.
 - The L-fingers do not have any sharp edges and are extremely strong and resistant to breakage.
 - Because there is plenty of space for them in the large finger slots, the cables are neither squeezed nor kinked.
 - The L-fingers retain the cables in the finger slots whenever you need to work with the covers folded back or removed.
- Dimensions (H x L x W): 213 (46 HU) x 90 x 90 cm
- Material and color: Powder-coated steel, RAL 9005 (black)

Optional:

19" Intermediate Rack for the construction of rack rows with uneven numbers of racks on request.

Delivery form:

- Factory-mounted on pallet (total height with pallet and packaging: 230 cm)
- Including adjustable feet for on-site installation

Accessories:

Wide range of accessories such as side walls, cable guides, excess cable storage for the top of the rack are available on request.



More details are on our
Product Information "DC-PLR"

About Rosenberger OSI:

Since 1991, Rosenberger Optical Solutions & Infrastructure (Rosenberger OSI) has been a recognized expert for fiber-based connectivity, cabling solutions and infrastructure services in the areas of data centers, local area networks, mobile networks and industrial applications. As an integrated solution provider, we have high expertise in the development and operational excellence in the production of system solutions for communication networks. Our comprehensive services enable the secure and efficient operation of digital infrastructures. This combination, combined with our strong customer focus, makes us unique and a strong partner in the global market.

Rosenberger OSI has been part of the globally operating Rosenberger Group since 1998. The Rosenberger Group is a leading global provider of high-frequency, high-voltage and fiber optic connectivity solutions with headquarters in Germany. For further information, please visit:

www.rosenberger.com/osi

Rosenberger

Rosenberger-OSI GmbH & Co. OHG

Optical Solutions & Infrastructure | Endorferstr. 6 | 86167 Augsburg | GERMANY | Telephone: +49 821 24924-0
info-osi@rosenberger.com | www.rosenberger.com/osi

Rosenberger® is a registered trademark of Rosenberger Hochfrequenztechnik GmbH & Co. KG. All rights reserved. © Rosenberger 2022

For technical reasons, we reserve us the right to make any deviations from the illustrations in the product information.
Transfer to third party only by authority of Rosenberger-OSI GmbH & Co. OHG- All rights reserved.

Creation date: 2017-03-30
Valid since: 2022-10-06
Revision: 006