



Rosenberger

OPTICAL SOLUTIONS & INFRASTRUCTURE

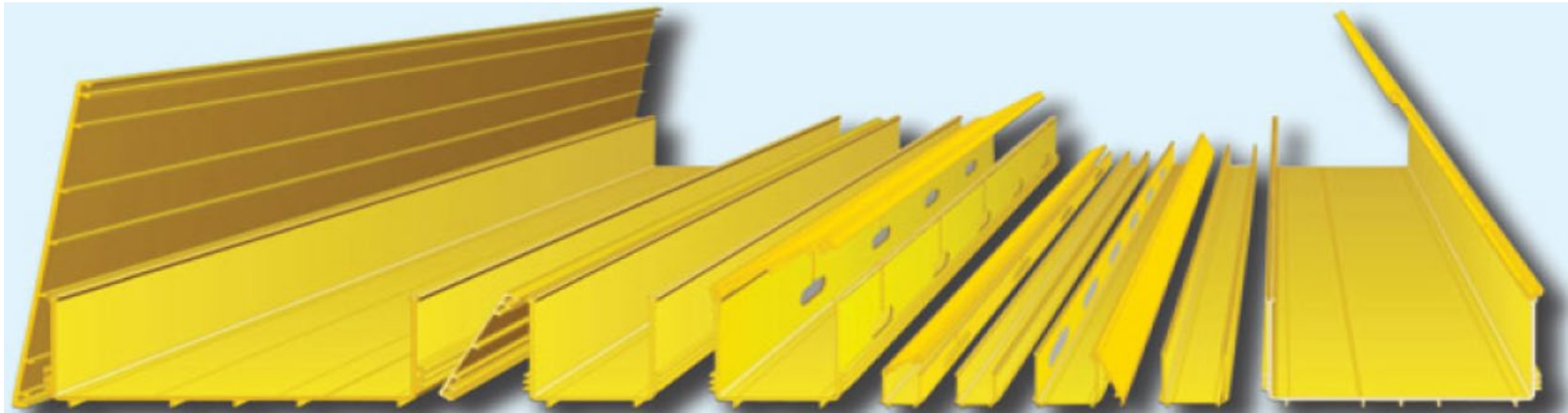
Fiber Optic Cable Duct System Yellowduct®

www.rosenberger.com/osi

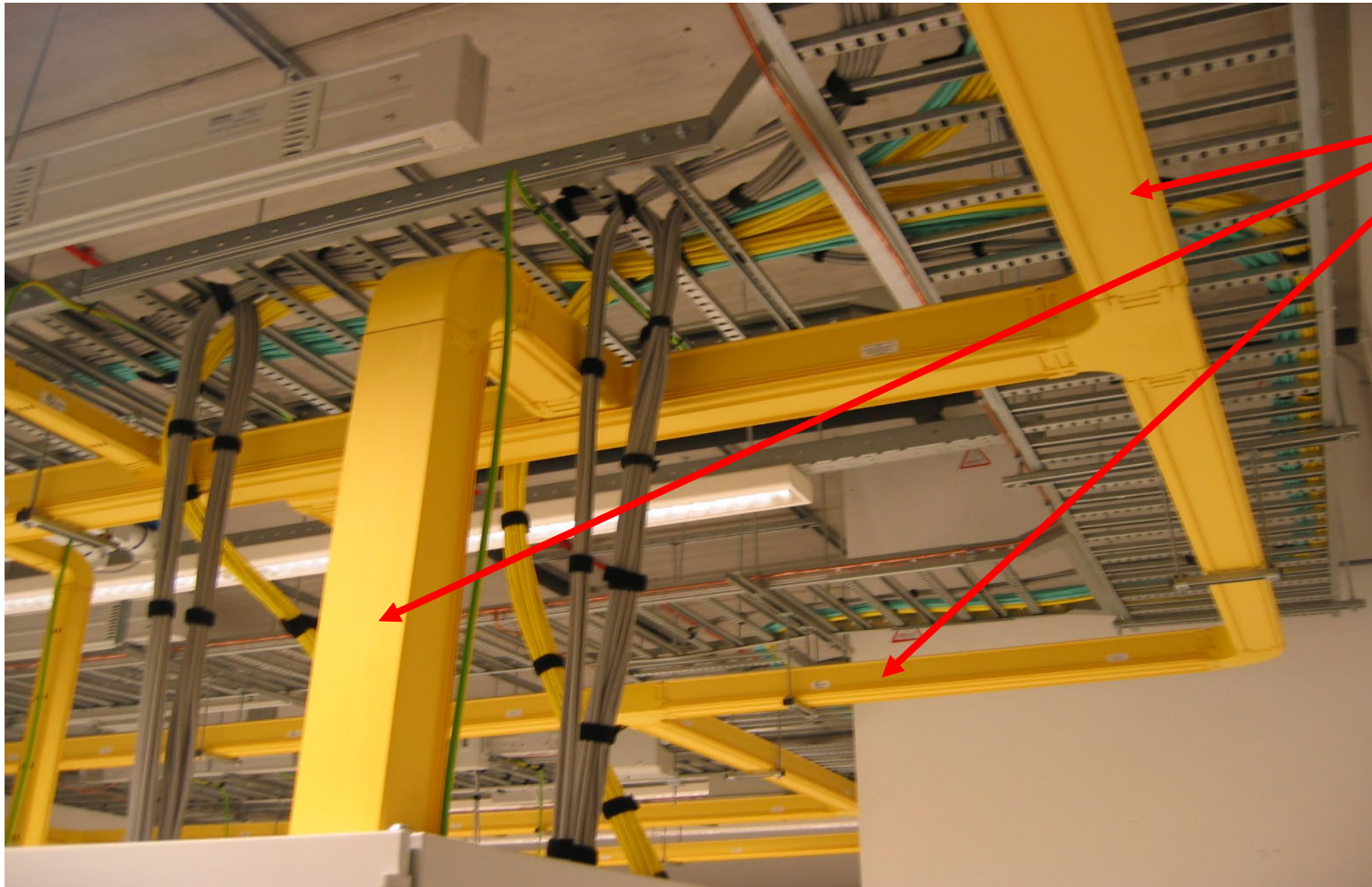
- LSZH Low Smoke ZERO Halogen. In case of fire, deposits of halogen will damage PCBs.
- Available in: Yellow, Orange (redundant path) Black (UTP)
- Wide variety of parts
- Adaptors to connect to other brands
- Warehouse in the Netherlands
- Toolless joiners

- ✓ Straight Ducts
- ✓ Elbow horizontal and vertical
- ✓ T-piece horizontal
- ✓ T-piece vertical
- ✓ Cross
- ✓ Adaptors
- ✓ Exits
- ✓ Side cut exits
- ✓ Glasveselgoten
- ✓ Overlengthmodules
- ✓ Joiners

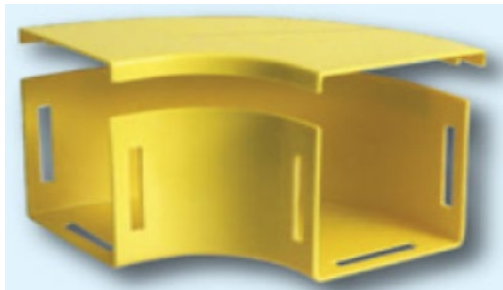
Straight Ducts



Size Millimetres Size Inches	30 x 30 1,25' x 1,25'	50 x 50 2'x2'	100 x 50 4'x2'	100 x 100 4'x4'	220 x 100 8'x4'	300 x 100 12'x4'
Solid duct	TC1279-83	TC1279-81	TC1279-223	TC1279-23	TC1279-21	TC1279-275
Solid duct & cover	TC1279-83XA	TC1279-81XA	TC1279-223ASN	TC1279-23ASN	TC1279-21ASN	TC1279-275A
Solid duct & hinged cover	TC1279-83A*	TC1279-81A*	TC1279-223A	TC1279-23A	TC1279-21A	N/A
Slotted duct (side exit)	TC1279-83SL	TC1279-81SL	TC1279-223SL	TC1279-23SL	N/A	N/A
Slotted duct & cover	TC1279-83SLXA	TC1279-81SLXA	TC1279-223SLASN	TC1279-23SLASN	N/A	N/A
Slotted duct & hinged cover	TC1279-83SLA*	TC1279-81SLA*	TC1279-223SLXA	TC1279-23SLA	N/A	N/A



Straight ducts components
look in a Data Center

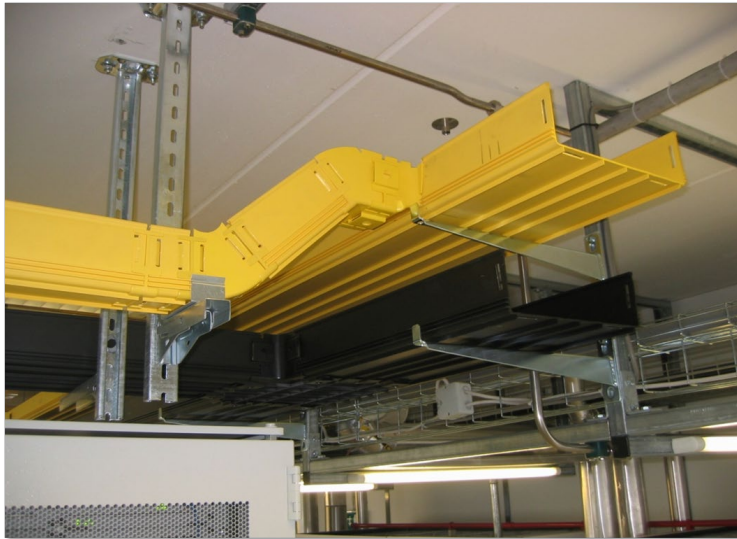


Lightpaths Horizontal Elbows are used to change the direction of horizontal routes. They are available with or without covers.



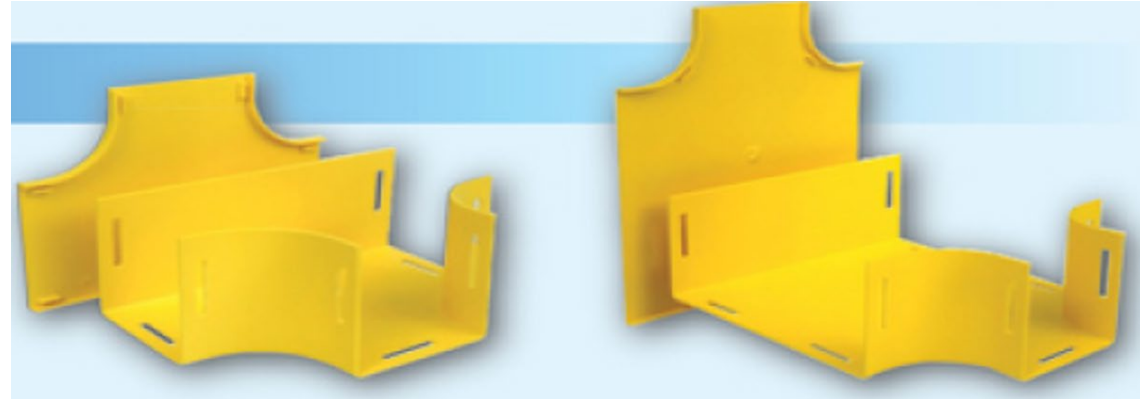
Elbow horizontal & vertical

Vertical Elbow elements
passing under a building
beam



Horizontal Tees

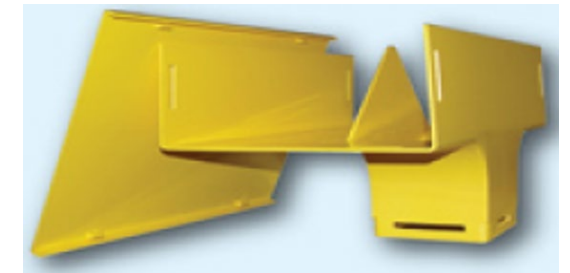
Lightpaths Horizontal Tees may be used to branch off the main route or provide a method of breaking into Horizontal Duct. They are available with or without covers.

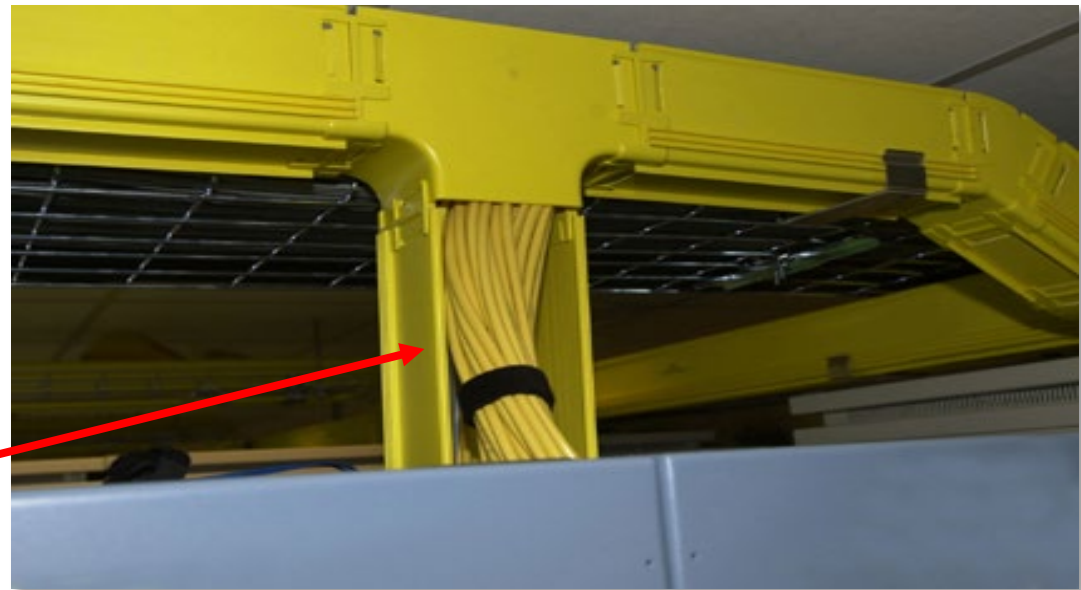


Size Millimetres Size Inches	30 x 30 1,25' x 1,25'	50 x 50 2'x2'	100 x 50 4'x2'	100 x 100 4'x4'	220 x 100 8'x4'	300 x 100 12'x4'
Horizontal Tee	TC1279-115	TC1279-75	TC1279-224	TC1279-03	TC1279-01	TC1279-279
Horizontal Tee & cover	TC1279-115A	TC1279-75A	TC1279-224A	TC1279-03A	TC1279-01A	TC1279-279A
300mm – 220mm Duct Horizontal Tee & cover	TC1279-316A		220mm – 100mm Duct Horizontal Tee & cover			TC1279-09A

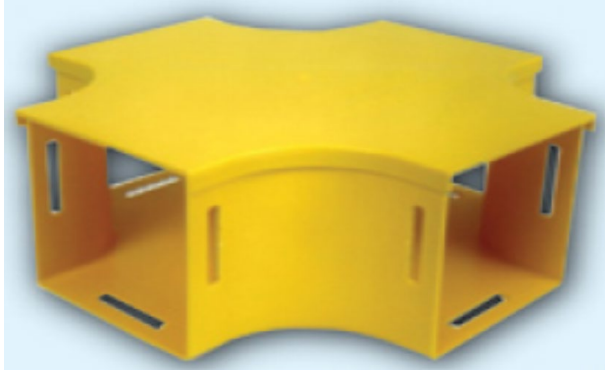
T-piece vertical

Size Millimetres Size Inches	30 x 30 1,25' x 1,25'	50 x 50 2'x2'	100 x 50 4'x2'	100 x 100 4'x4'	220 x 100 8'x4'	300 x 100 12'x4'
30 x 30mm drop	TC1279-167	N/A	N/A	N/A	N/A	N/A
30 x 30mm drop & cover	TC1279-167A	N/A	N/A	N/A	N/A	N/A
50 x 50mm drop	N/A	TC1279-145	N/A	N/A	N/A	N/A
50 x 50mm drop & cover	N/A	TC1279-145A	N/A	N/A	N/A	N/A
50 x 50mm drop retro	N/A	TC1279-145R	N/A	N/A	N/A	N/A
100 x 50mm drop	N/A	N/A	TC1279-228	N/A	N/A	N/A
100 x 50mm drop & cover	N/A	N/A	TC1279-228A	N/A	N/A	N/A
100 x 100mm drop	N/A	N/A	N/A	TC1279-63	TC1279-11	N/A
100 x 100mm drop & cover	N/A	N/A	N/A	TC1279-63A	TC1279-11A	N/A
100 x 100mm drop retro	N/A	N/A	N/A	TC1279-63R	TC1279-11R	N/A
220 x 100mm drop	N/A	N/A	N/A	N/A	N/A	TC1279-277
220 x 100mm drop & cover	N/A	N/A	N/A	N/A	TC1279-329A	TC1279-277A





T-piece vertical to access of Rack entry with Rosenberger Trunks



Lightpaths Horizontal Crosses can be used to provide a cross intersection in straight duct. Reduction crosses join horizontal duct of different sizes.

Size Millimetres Size Inches	30 x 30 1,25' x 1,25'	50 x 50 2'x2'	100 x 50 4'x2'	100 x 100 4'x4'	220 x 100 8'x4'	300 x 100 12'x4'	
Horizontal Cross	N/A	TC1279-139	TC1279-234	TC1279-71	TC1279-61	TC1279-300	
Horizontal Cross & cover	N/A	TC1279-139A	TC1279-234A	TC1279-71A	TC1279-61A	TC1279-300A	
Reduction Cross	220 x 100 to 100 x 100		Part No. TC1279-65		220 x 100 to 300 x 100		Part No. TC1279-331
Reduction Cross & cover	220 x 100 to 100 x 100		Part No. TC1279-65A		220 x 100 to 300 x 100		Part No. TC1279-331A

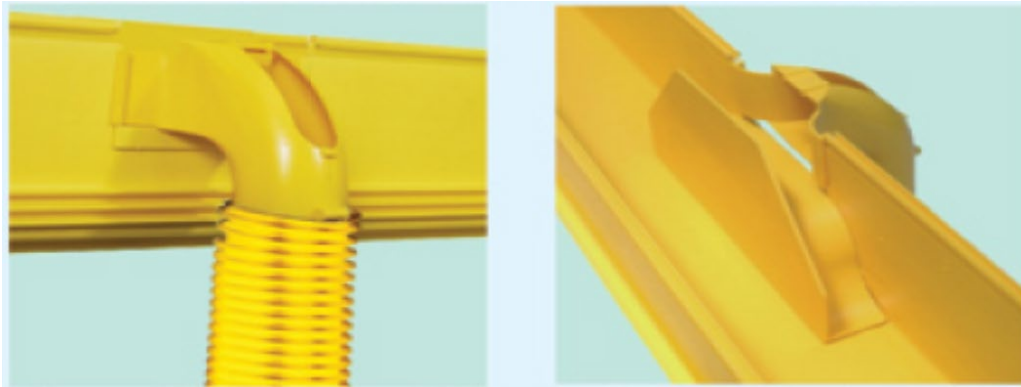
Main size Reduction size	50 x 50 30 x 30	100 x 50 50 x 50	100 x 100 50 x 50
Reducer	TC1279-97	TC1279-238	TC1279-91
Reducer & cover	TC1279-97A	TC1279-238A	TC1279-91A



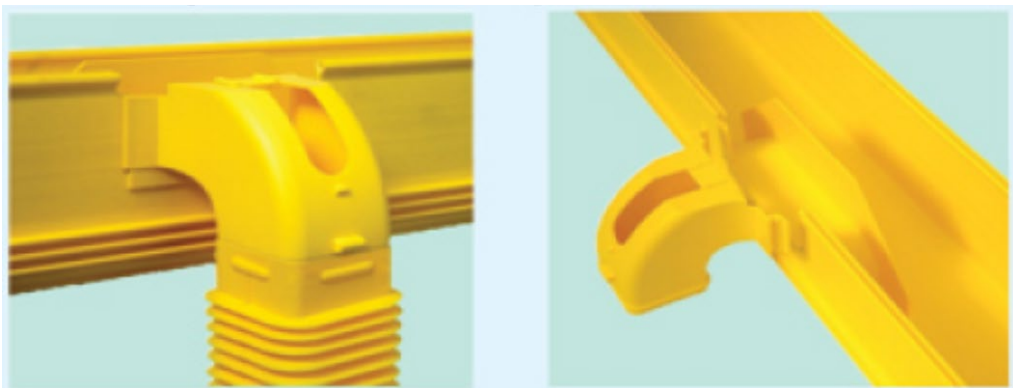
Main size Reduction size	100 x 100 100 x 50	220 x 100 100 x 100	300 x 100 220 x 100
Reducer		TC1279-65	TC1279-281
Reducer & cover		TC1279-65A	TC1279-281A
Reducer Right Hand		TC1279-05	
Reducer Right Hand & Cover		TC1279-05A	
Reducer Left Hand		TC1279-07	
Reducer Left Hand & Cover		TC1279-07A	



Side drop off to 50mm dia. convoluted tube



Side drop off to 50mm square convoluted tube



TC1279-41KIT



- 1 x Drop off connector
- 1 x Spreader
- 1 x Ramp up

This drop can fit about 80; 2,4mm cables

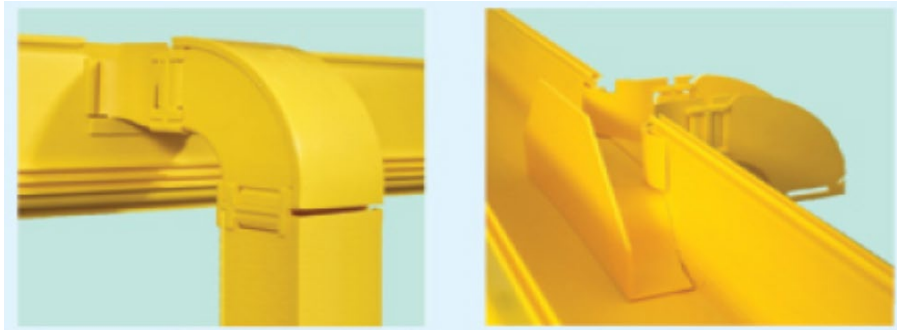
TC1279-89KIT



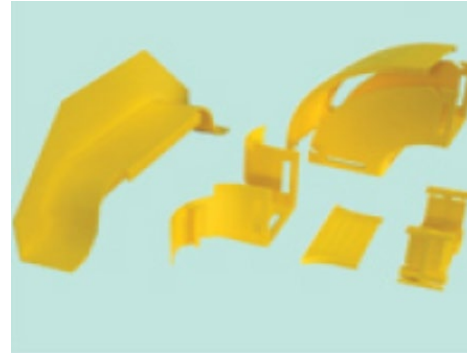
- 1 x Drop off connector
- 1 x Spreader
- 1 x Ramp up

This drop can fit between 100 – 150; 2,4mm cables

Side drop-off to 50mm Ducting–Raceway



TC1279-93KIT



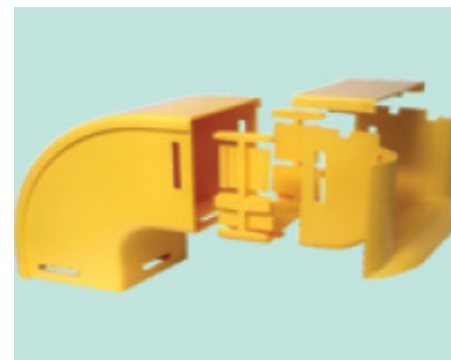
- 1 x Break out
- 1 x Ramp up
- 1 x Joiner
- 1 x Down Elbow

This drop can fit between
100 – 150, 2,4mm cables

Side drop-off to 100 x 100mm Ducting–Raceway

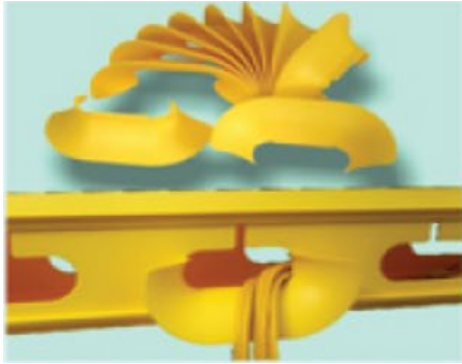


TC1279-111KIT



- 1 x Break out
- 1 x Joiner
- 1 x Down Elbow

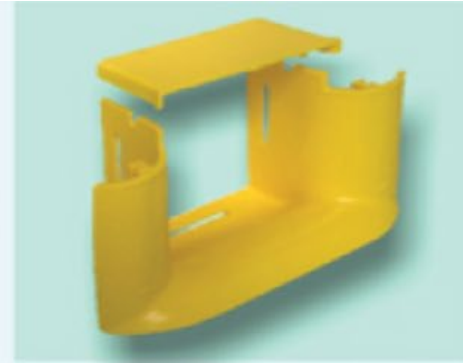
This drop can fit between
500 – 600, 2,4mm cables



TC1279-212KIT
Radius guide (Pack of 10) to suit 50 & 100mm slotted duct



TC1279-42
Ramp up



Outlet trumpet
TC1279-218A 100mm
TC1279-330A 220mm
TC1279-379A 300mm



TC1279-93A
Outlet trumpet
50 x 50mm



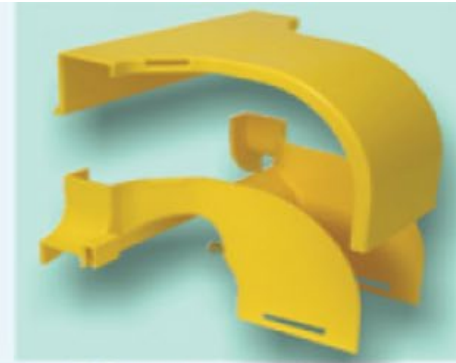
TC1279-290A
Top outlet



TC1279-307A
Top outlet



TC1279-290ASL
(with slots)



TC1279-307ASL
(with slots)

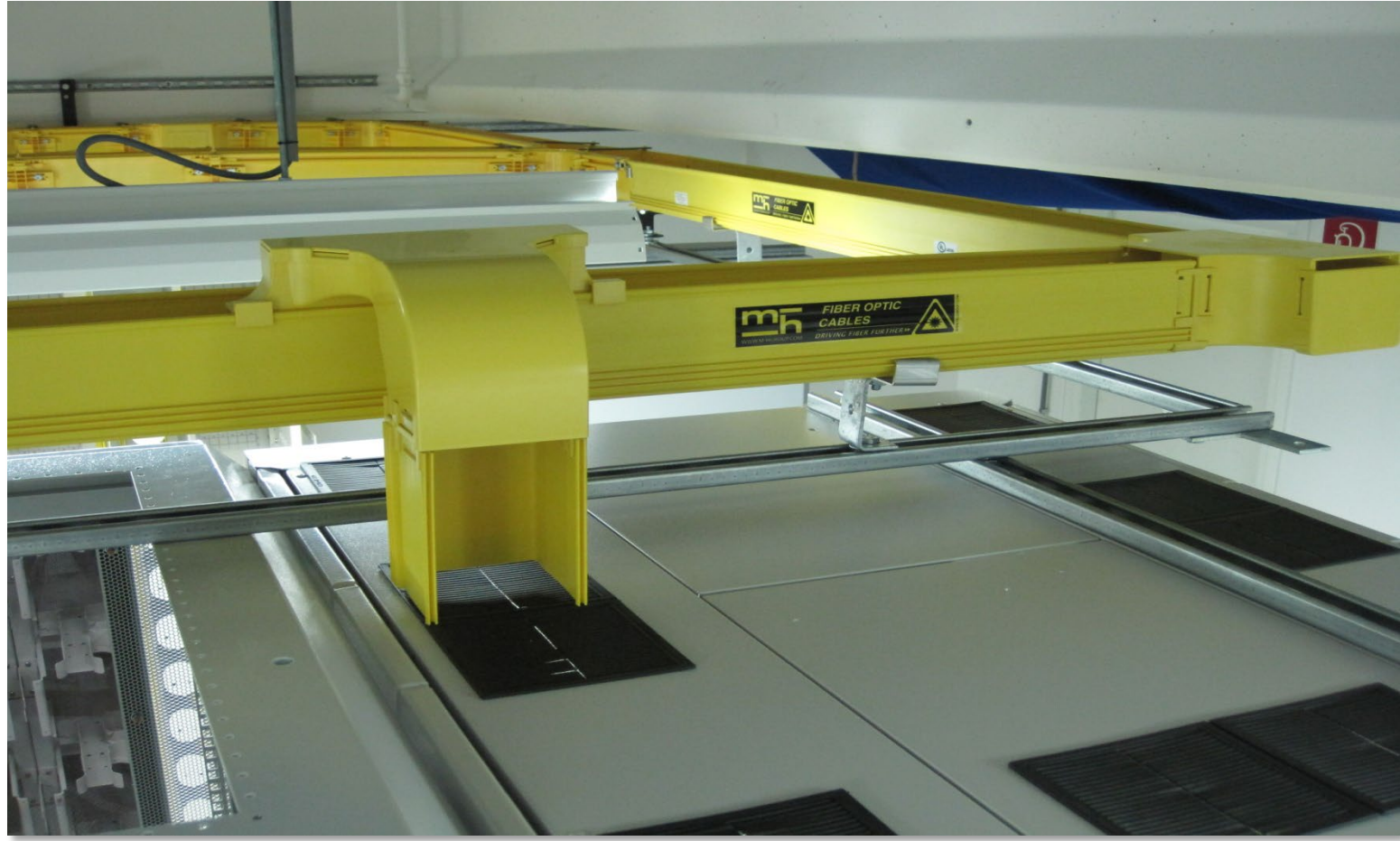
Cut out JIG



Side exits to access of Rack entry with Rosenberger Trunks

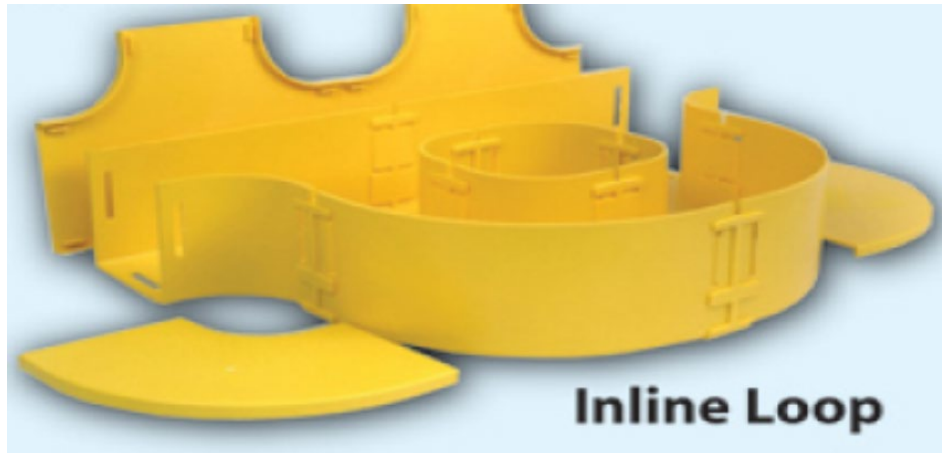






Lightspaths Fiber Storage Loops are used to safely store excess fiber length and can be placed in any horizontal route or inside cabinets.

They are available in inline or offset versions.





Metal free slotted

Slotless joiner for quick connection



1/4 turn to lock



TC1279-121A



Slotting tool for
30mm

TC1279-118A



Slotting tool für
50mm

TC1279-51



Slotting tool for 220
& 100mm duct

TC1279-230



Side slotting tool for
100 x 50mm duct

Cut out tools are used to cut notches in the side of the duct to accommodate drop-outs. They are supplied with a fiber spreader to protect previously installed fibers when using the tools.

TC1279-50



Cut out tool

TC1279-231A



Large cut out tool

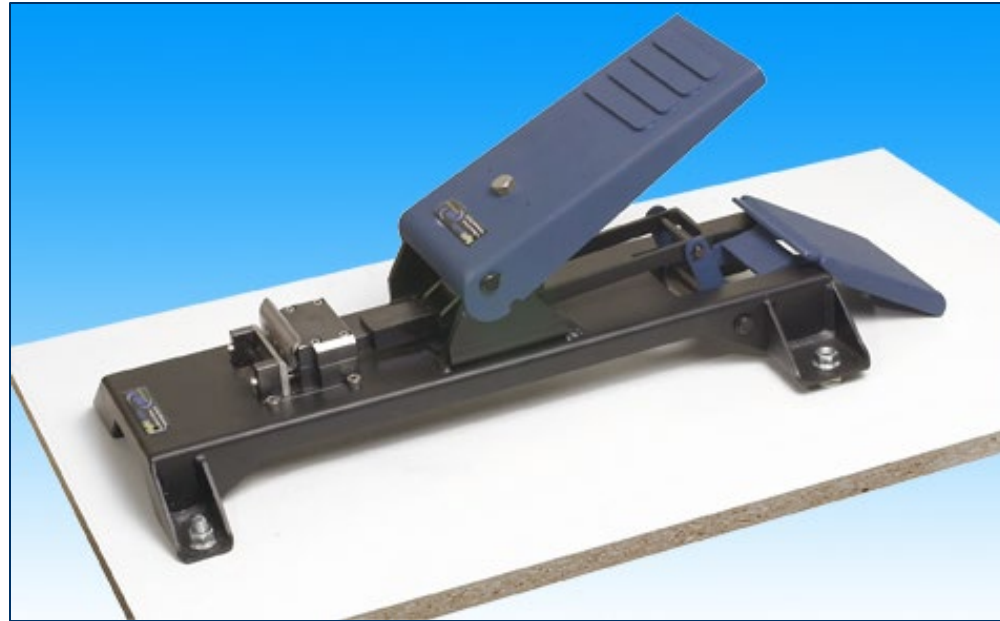
TC1279-50-3



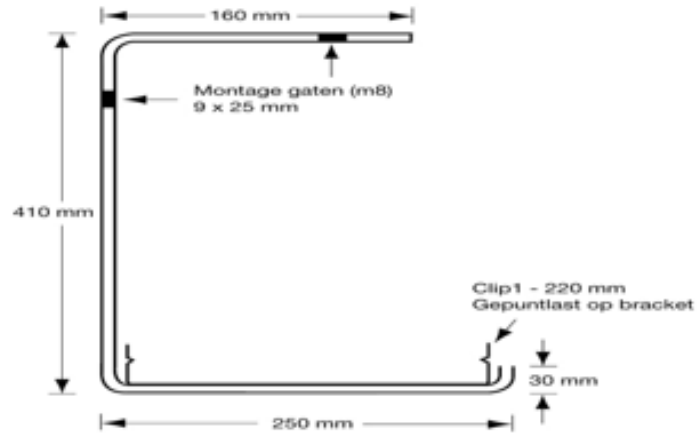
Fiber Spreader



Cut out tool & fiber
spreader



Foot operated slotting tool



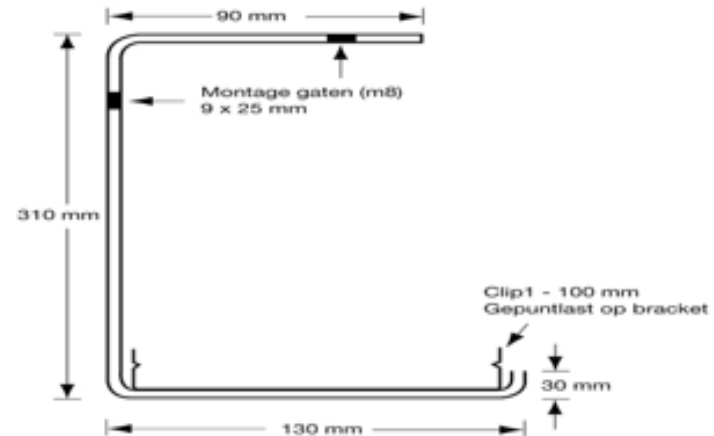
C-Mounting bracket for 220mm wide glasveselgoten

Ref: "mh30"

Material:

5mm thick

50mm wide



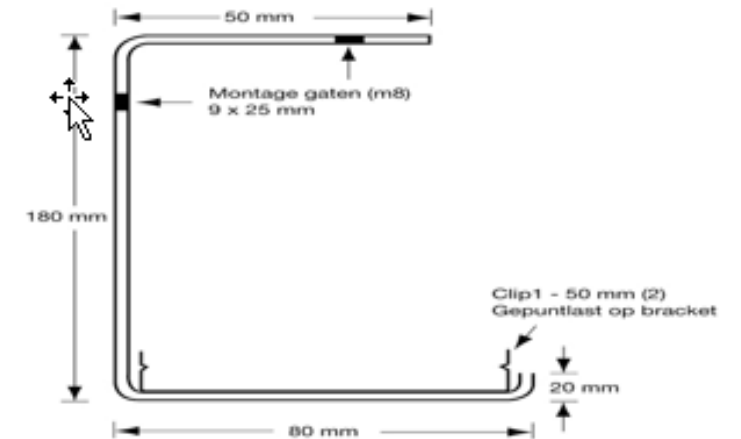
C-Mounting bracket for 100mm wide glasveselgoten

Ref: "mh31"

Material:

5mm thick

50mm wide



C-Mounting bracket for 50mm wide glasveselgoten

Ref: "mh32"

Material:

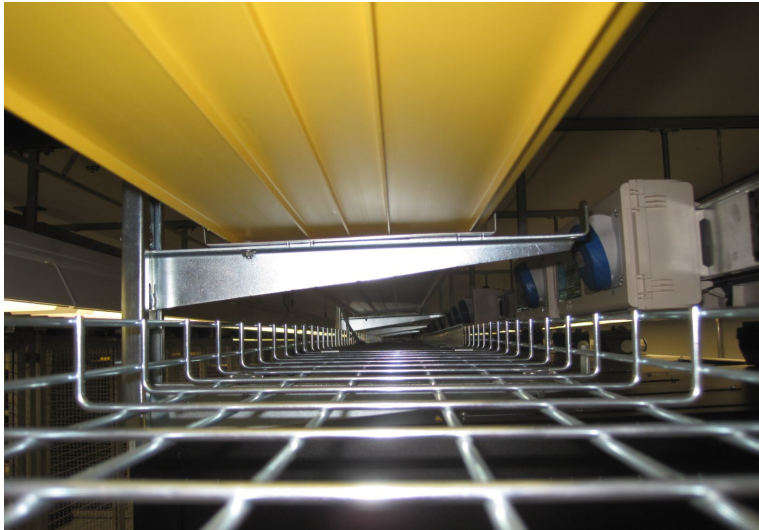
4mm thick

50mm wide

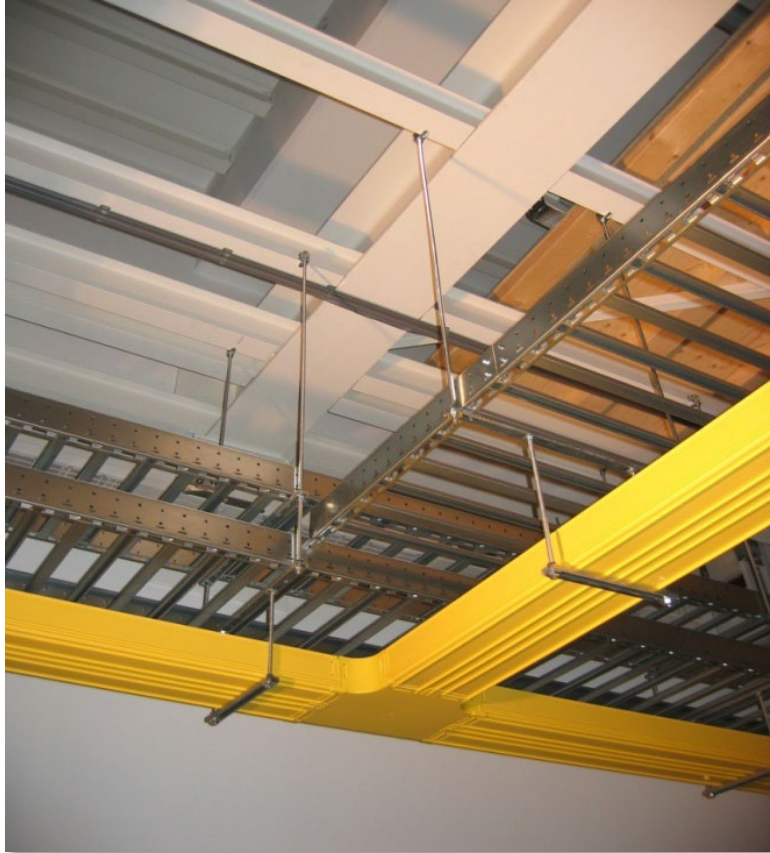
Top ceiling bracket
to sustain yellow
duct from ceiling



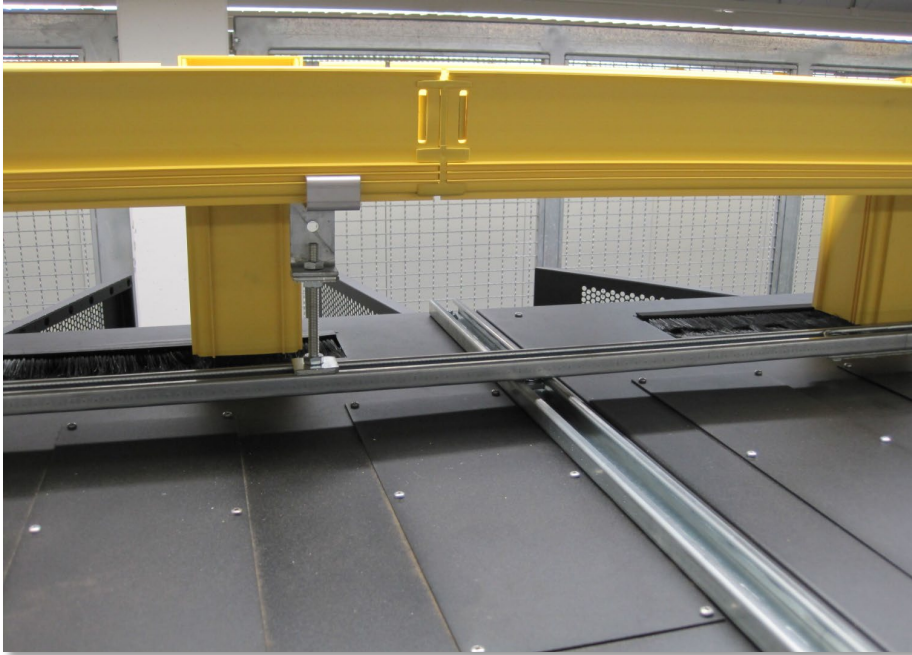
Top of cabinet yellow duct holders



Yellow Duct holders

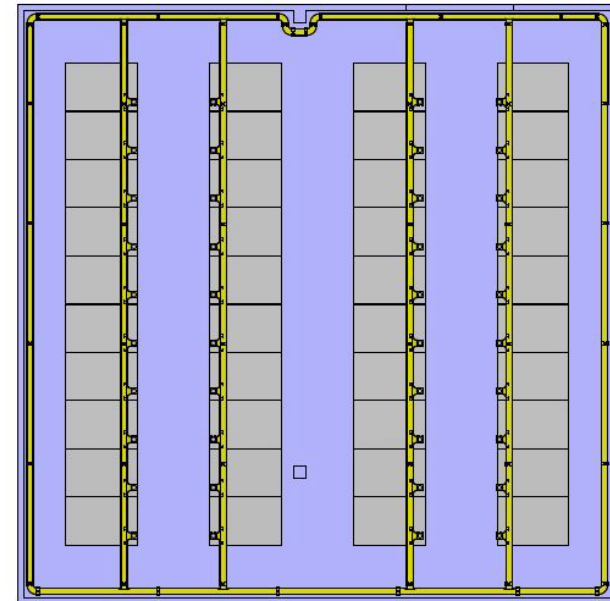
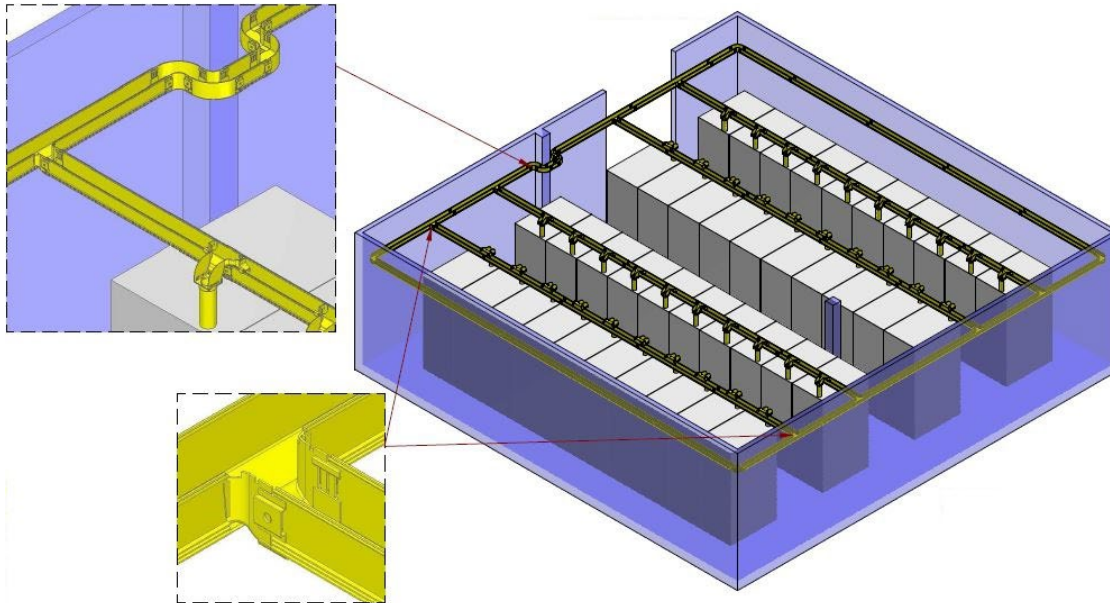







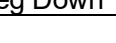
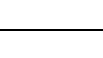
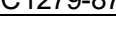
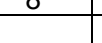



- Design
- BOM
- Advice

Based on floorplan (Autocad, BIM, Visio)



Bill of materials (BOM)

Examples how the BOM would look

BOM for Design (50mm Yellow Ducting) (Issue 01)				
	Part Description	Part No	Total Qty	Picture
1	50mm x 50mm Duct & Snap on Lid	TC1279-81XA	28	
2	50mm x 50mm Horizontal Tee & Lid	TC1279-75A	4	
3	50mm x 50mm Horizontal Elbow & Lid 90 Deg	TC1279-77A	4	
4	50mm x 50mm Joiner	TC1279-73	68	
5	50mm x 50mm Vertical Elbow & Lid 90 Deg Down	TC1279-87A	8	
6	50mm x 50mm Vertical Elbow & Lid 90 Deg Up	TC1279-143A	1	
7	50mm x 50mm Vertical Tee & Lid (50mm x 50mm Drop)	TC1279-145A	4	
8	Mounting Hardware Ducting "C" Type Bracket (50mm)	TC1279-147A	48	

Fiber cable capacity overview

- Number of fibers per cablesizes
- Recommended load: 50%

Duct size (mm)	30 x 30			50 x 50			100 x 50			100 x 100			220 x 100			300 x 100		
Optical Cable size (mm)	3	2-2.4	1.6-2	3	2-2.4	1.6-2	3	2-2.4	1.6-2	3	2-2.4	1.6-2	3	2-2.4	1.6-2	3	2-2.4	1.6-2
Straight Duct	45	60	100	120	155	265	250	350	600	500	700	1200	1100	1500	2500	1500	2100	3600
Duct with Ramp-Off										300	400	700	720	1000	1700			
Vertical Tee - straight through										500	700	1200	300	400	700			
Vertical Tee Downspout - Drop										500	700	1200	500	700	1200			
Over-the-Top Outlet										300	400	700						
Convoluting Tubing	Split 200mm Ø			Split 38mm Ø			Split 50mm Ø			50 x 50 square								
Optical Cable size (mm)	3	2-2.4	1.6-2	3	2-2.4	1.6-2	3	2-2.4	1.6-2	3	2-2.4	1.6-2						
Tubing Capacity	10	12	20	24	30	50	60	80	135	120	155	265						

Rosenberger-OSI GmbH & Co. OHG

Optical Solutions & Infrastructure

Endorferstr. 6

86167 Augsburg

E-Mail: info-osi@rosenberger.com

Phone: +49 821 249240

FOR MORE INFORMATION

www.rosenberger.com/osi

