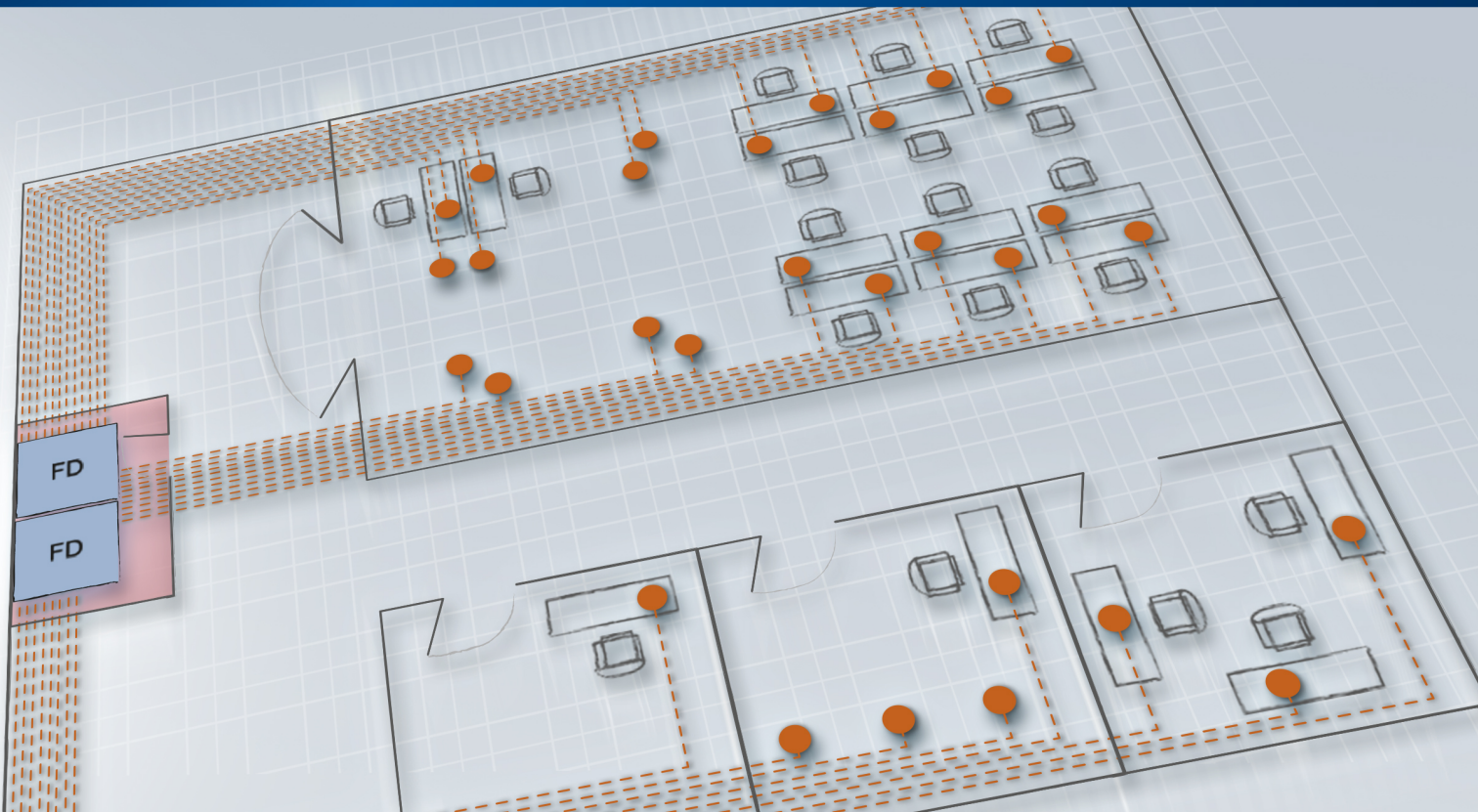


## PreCONNECT® isoNET

## PRODUCT INFORMATION



## Applications:

PreCONNECT® isoNET is the name given to a modern cabling system for the LAN infrastructure of buildings and office environments

## System consisting of:

- Range of planning and installation services
- State-of-the-art distribution components
- Fiber optic cables pre-assembled on one or two sides, predominantly for the primary sector
- High-quality copper cabling
- Various 19" panel systems for splice or patch applications
- Wall and free-standing distributors as splice and distribution variants
- Connecting sockets and patchcords
- Useful accessories

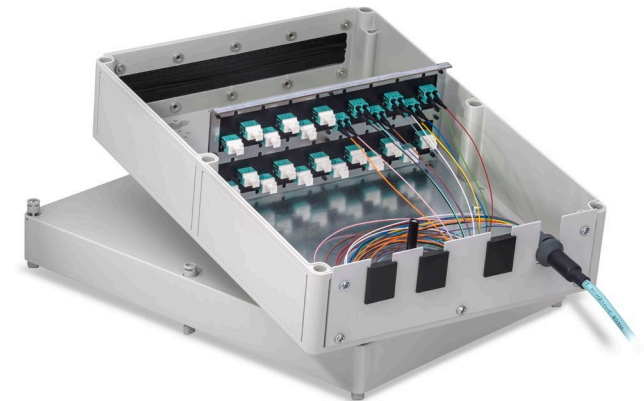
## Characteristics:

End-to-end, fully harmonized cabling system for cabling buildings and offices

- Forward-looking fiber optic technology
- High-quality copper cabling
- Time- and cost-efficient LAN cabling thanks to the use of cables pre-assembled on one or two sides depending on local requirements to offer approx. 5% time saving at the installation site.
- Standards-compliant planning and implementation
- Thanks to the gel-free cables, it is not necessary to clean the fibers when splicing on-site and work is therefore more efficient
- The cables are available in various fire classes (CPR)
- Indoor cables for permanent installation are available ex stock in the highest available fire protection class (B2)

## The benefits at a glance:

- Time-saving, cost-effective LAN cabling with single and double-sided pre-assembly and cabling design created by experts
- Network solution with low administrative overhead because the active components are centralized.
- End-to-end, fully harmonized cabling system for cabling buildings and offices.
- Turnkey solution, planning, installation and documentation from a single source

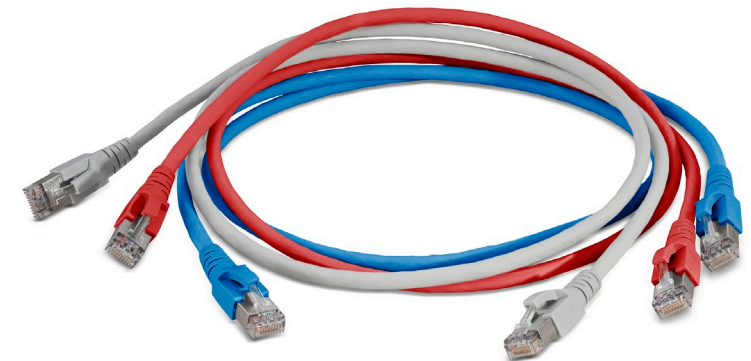


## PreCONNECT® building cabling

The PreCONNECT® isoNET, PreCONNECT® flexNET, PreCONNECT® smartNET systems are modern, standards-compliant, extendable cabling systems designed to provide a robust, high-performance infrastructure with various levels of flexibility to respond to the challenges brought by the frequent changes that characterize the modern working world.

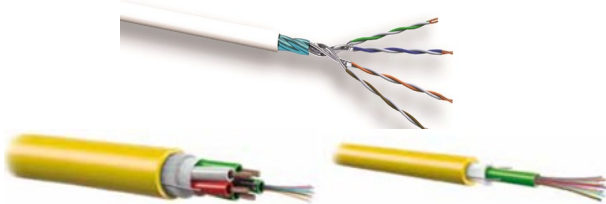
- In this context, PreCONNECT® isoNET is a conventional cabling solution with state-of-the-art distribution components and, in some cases, pre-assembled fiber optic and copper cabling.
- PreCONNECT® flexNET brings passive distributors (passive copper consolidation points) very close to the endpoints in order to be able to respond optimally to any local redesign in the enterprise's operating processes.
- PreCONNECT® smartNET boosts performance and flexibility by routing optical fibers directly into the office distributors, meaning that it is only here that the layer 2 network is distributed to the local endpoints over very short line lengths.

<b>Contents</b>	<b>Page</b>
Overview	2 – 4
Fiber optic splice solution	5 - 9
Fiber optic distribution solution	10 - 11
MTP®/MPO application	12
Copper solution	13 - 16
Racks & distributors	17 – 20
Accessories	21 – 23



## PreCONNECT® isoNET cabling system

**Bulk cabling, fiber optic and copper**



**19" Cu panels**



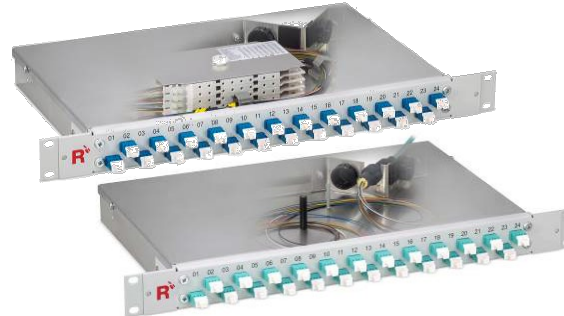
**RJ45 sockets**



**PreCONNECT® isoNET half-trunk - trunk cables**



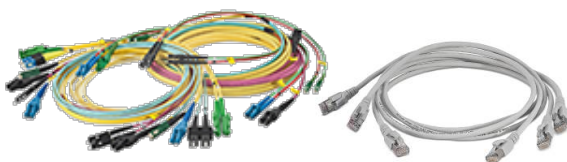
**19" 1HU splice and distribution panel  
Fixed installation**



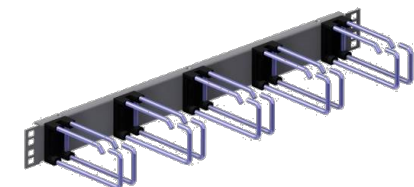
**Accessories**



**Patchcords  
Fiber optic and copper**



**Highly modular SMAP-G2 19"  
distribution panel  
with MTP®/MPO modules**



## PreCONNECT® isoNET cabling system

### Fiber optic splice solution

Other cable variants, e.g. with OM5 or OM2 fibers are available on request

#### Fiber optic indoor cables

Type: I-B(ZN)BH XXXX/125µm JF (JF = Gel-free)	12 fibers OS2	<b>024A0014G657A1</b>
Jacket: FRNC-LSZH non-metallic	24 fibers OS2	<b>024A0012G657A1</b>
Rodent protection	12 fibers OM3	<b>024A0015OM3BI</b>
CPR B2ca	24 fibers OM3	<b>024A0013OM3BI</b>
	12 fibers OM4	<b>024A0015OM4BI</b>
	24 fibers OM4	<b>024A0013OM4BI</b>



#### Fiber optic indoor cables

Type: I-F(ZN)H XXXX/125µm	12 fibers OS2	<b>037A0004G657A1</b>
Jacket: FRNC-LSZH	24 fibers OS2	<b>037A0016G657A1</b>
3 mm	12 fibers OM3	<b>037A0001OM3BI</b>
	24 fibers OM3	<b>037A0004OM3BI</b>
	12 fibers OM4	<b>037A0001OM4BI</b>
	24 fibers OM4	<b>037A0004OM4BI</b>



#### Fiber optic indoor cables

Type: I-F(ZN)H(ZN)H XXXX/125µm	12 fibers OS2	<b>037A0005G657A1</b>
Jacket: FRNC-LSZH	12 fibers OM3	<b>037A0002OM3BI</b>
3/4.5 m	12 fibers OM4	<b>037A0002OM4BI</b>
CPR Dca		

## PreCONNECT® isoNET cabling system

### Fiber optic splice solution

#### Fiber optic installation cables, universal cables

Type: U-DQ(ZN)BH XX XX/125µm	12 fibers OS2	<b>030A0010G657A1</b>
Jacket: FRNC-LSZH with rodent protection	24 fibers OS2	<b>030A0016G657A1</b>
	48 fibers OS2	<b>030A0025G657A1</b>
	12 fibers OM3	<b>030A0110OM3BI</b>
	24 fibers OM3	<b>030A0116OM3BI</b>
	48 fibers OM3	<b>030A0125OM3BI</b>
	12 fibers OM4	<b>030A0110OM4BI</b>
	24 fibers OM4	<b>030A0116OM4BI</b>
	48 fibers OM4	<b>030A0125OM4BI</b>



#### Fiber optic installation cables, outdoor cables

Type: A-DQ(ZN)B2Y XX XX/125µm	12 fibers OS2	<b>010A0010</b>
Jacket: PE with rodent protection	24 fibers OS2	<b>010A0016</b>
	48 fibers OS2	<b>010A0025</b>
	12 fibers OM3	<b>010A0110OM3BI</b>
	24 fibers OM3	<b>010A0116OM3BI</b>
	12 fibers OM4	<b>010A0110OM4BI</b>
	24 fibers OM4	<b>010A0116OM4BI</b>



## PreCONNECT® isoNET cabling system

### Fiber optic splice solution

#### 19" splice panel, 1 HU LC duplex

RAL 7035, panel for fixed installation  
Aluminium body

Ready for splicing with splice cassettes with  
pigtail fibers and fiber optic adapters pre-  
assembled ex works

12 fibers OS2  
24 fibers OS2  
48 fibers OS2

**231L0353**  
**231L0355**  
**231L0358**

12 fibers OM3  
24 fibers OM3  
48 fibers OM3

**231L1323OM3**  
**231L1325OM3**  
**231L1328OM3**

12 fibers OM4  
24 fibers OM4  
48 fibers OM4

**231L1323OM4**  
**231L1325OM4**  
**231L1328OM4**

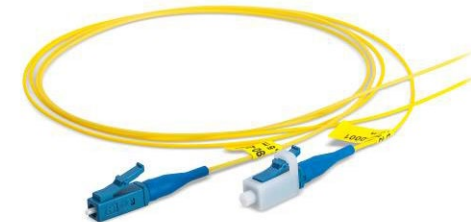


#### Fiber optic buffered fiber pigtail

Connector system: LC, OS2  
Cable type: I-VH 1 X/125µm,  
Buffered fiber  
Length: 2 m

9µm OS2  
50µm OM3  
50µm OM4

**087L1743**  
**087L1744OM3**  
**087L1744OM4**

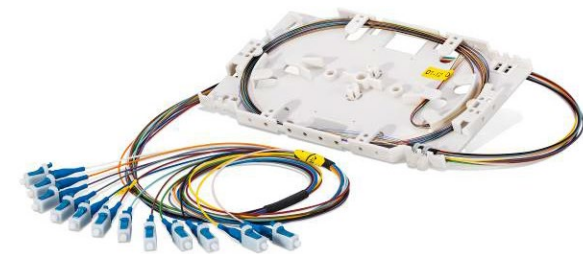


#### Factory-assembled splice cassette

with 12 fibers X/125µm, buffered fiber  
Connector system: LC-Simplex  
Length: 2 m  
without splice accessories

12 fibers OS2  
12 fibers OM3  
12 fibers OM4

**117L7000G657A1**  
**117L7001OM3**  
**117L7001OM4**



## PreCONNECT® isoNET cabling system

### Universal panel 360x254x111 mm

Splice panel, patchfield inside  
 Connector system: LCD/LCD  
 Plastic, colour: RAL 7035 light grey

24 fibers OS2	<b>118L4302</b>
48 fibers OS2	<b>118L4303</b>
24 fibers OM3	<b>118L4304OM3</b>
48 fibers OM3	<b>118L4305OM3</b>
24 fibers OM4	<b>118L4304OM4</b>
48 fibers OM4	<b>118L4305OM4</b>



### Mini-universal box splice panel

Connector system: LC duplex  
 incl. splice cassette and set of pigtailed  
 without splice holders and protectors  
 Plastic, RAL 7035 light grey

12 fibers OS2	<b>114L0681</b>
12 fibers OM3	<b>114L0782OM3</b>
12 fibers OM4	<b>114L0782OM4</b>

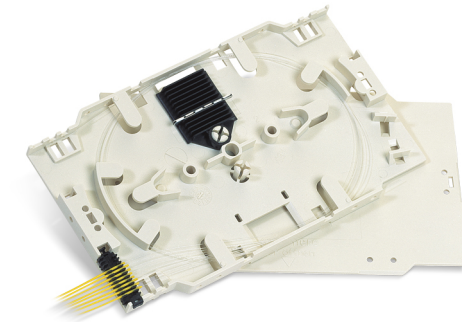




## PreCONNECT® isoNET cabling system

### Splice solution for fiber optics

<b>Crimp splice protector</b>	<b>111A0001</b>
<b>Crimp splice protector holder</b>	<b>111A0000</b>
<b>Shrink splice protector</b>	<b>111A0003</b>
<b>Shrink splice protector holder</b>	<b>111A0002</b>
<b>Splice cassette</b>	<b>111A0008</b>
<b>Cover for splice cassette</b>	<b>111A0015</b>
<b>Strain relief for 900µm buffered fiber</b>	<b>111A0009</b>
<b>Cable glands PG13.5</b> for cable diameters 5 – 9 mm	<b>111A0426</b>
<b>Cable glands PG16</b> for cable diameters 7 – 12 mm	<b>111A0427</b>
<b>Cable glands PG21</b> for cable diameters 9 – 16 mm	<b>111A0402</b>
<b>Screw plug PG13.5</b>	<b>111A0430</b>
<b>Screw plug PG16</b>	<b>111A0431</b>
<b>Screw plug PG21</b>	<b>111A0432</b>



## PreCONNECT® isoNET cabling system

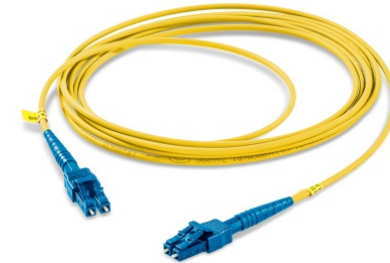
### Fiber optic distribution solution

#### Fiber optic duplex patchcords

Connector systems: LC-Compact/LC-Compact  
 Cable type: I-V(ZN)H2,FRNC-LSZH  
 Round cable 2.8 mm

OS2, 1 m  
 OS2, 2 m  
 OM3, 1 m  
 OM3, 2 m  
 OM4, 1 m  
 OM4, 2 m

**087L6600G657A1-1000**  
**087L6600G657A1-2000**  
**087L6601OM3-1000**  
**087L6601OM3-2000**  
**087L6601OM4-1000**  
**087L6601OM4-2000**



#### Fiber optic duplex patchcords

Connector systems: LC-Compact/LC-Compact  
 Cable type: I-V(ZN)H(ZN)H 2,FRNC-LSZH  
 Double-jacket round cable 2.8/ 5.0 mm

OS2, 5 m  
 OM3, 5 m  
 OM4, 5 m

**087L6610G657A1-5000**  
**087L6613OM3-5000**  
**087L6613OM4-5000**

### PreCONNECT® Eco half-trunk

Cable type: I-V(ZN)H 12x0.9

Mini breakout

Trunk cable pre-assembled on  
 both sides available on request.

12 fibers OS2  
 24 fibers OS2

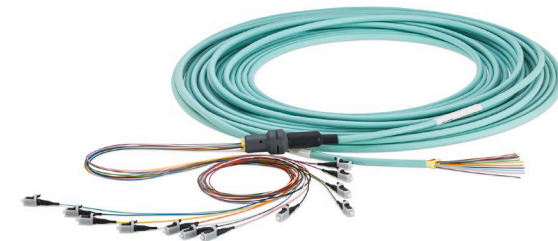
12 fibers OM3  
 24 fibers OM3

12 fibers OM4  
 24 fibers OM4

**032L0904Halbtrunk**  
**032L0905Halbtrunk**

**032L0535OM3Halbtrunk**  
**032L0538OM3Halbtrunk**

**032L0535OM4Halbtrunk**  
**032L0538OM4Halbtrunk**



## PreCONNECT® isoNET cabling system

### Fiber optic distribution solution

#### 19" PreCONNECT® distribution panel

<ul style="list-style-type: none"> <li>• 1 HU, RAL 7035, panel for fixed installation</li> <li>• Aluminium body</li> <li>• Connector system: LC duplex</li> </ul>	12 fibers OS2	<b>231L0173</b>
	24 fibers OS2	<b>231L0175</b>
	48 fibers OS2	<b>231L0177</b>
	12 fibers OM3	<b>231L1293OM3</b>
	24 fibers OM3	<b>231L1295OM3</b>
	48 fibers OM3	<b>231L1298OM3</b>
	12 fibers OM4	<b>231L1293OM4</b>
	24 fibers OM4	<b>231L1295OM4</b>
	48 fibers OM4	<b>231L1298OM4</b>



#### Universal panel 360x254x111mm distribution panel, patchfield inside

<ul style="list-style-type: none"> <li>• Connector system: LCD/LCD</li> <li>• Plastic, colour: RAL 7035 light grey</li> </ul>	24 fibers OS2	<b>118L4002</b>
	48 fibers OS2	<b>118L4003</b>
	24 fibers OM3	<b>118L4006OM3</b>
	48 fibers OM3	<b>118L4007OM3</b>
	24 fibers OM4	<b>118L4006OM4</b>
	48 fibers OM4	<b>118L4007OM4</b>



#### Mini-universal box distribution panel

<ul style="list-style-type: none"> <li>• Plastic, RAL 7035 light grey</li> <li>• Connector system: LC duplex</li> </ul>	12 fibers OS2	<b>114L0481</b>
	12 fibers OM3	<b>114L0582OM3</b>
	12 fibers OM4	<b>114L0582OM4</b>



## PreCONNECT® isoNET cabling system

### MTP®/MPO application:

#### Patch cord 12F, MTP® half-trunk

- 3.0/4.5mm
- Trunk cable pre-assembled on both sides available on request.

12 fibers OM3

**080L0766OM3Halbtrunk**

12 fibers OM4

**080L0766OM4Halbtrunk**



#### Breakout 24F, MTP®12f half-trunk

- I-F(ZN)HH2x12, square
- Trunk cable pre-assembled on both sides available on request.

24 fibers OM3

**037L0101OM3Halbtrunk**

24 fibers OM4

**037L0101OM4Halbtrunk**



#### SMAP-G2 MTP® module 1/4

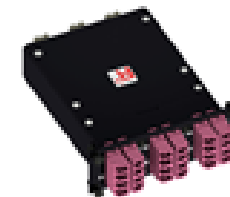
- 24 fibers
- Front 6 LC-Quad
- Back 2 MTP®-12F (male)
- RAL 9005 black

24 fibers OM3

**170L2002OM3**

24 fibers OM4

**170L2002OM4**



#### SMAP-G2 empty panel 1 HU

- Empty panel for part front plates or MTP® modules
- RAL 9005 black

**171L0001**



## PreCONNECT® isoNET cabling system

### Copper solution

#### Rosenberger OSI cable S/FTP cat.7

4x2xAWG 23/1

1000MHz

FRNC-LSZH

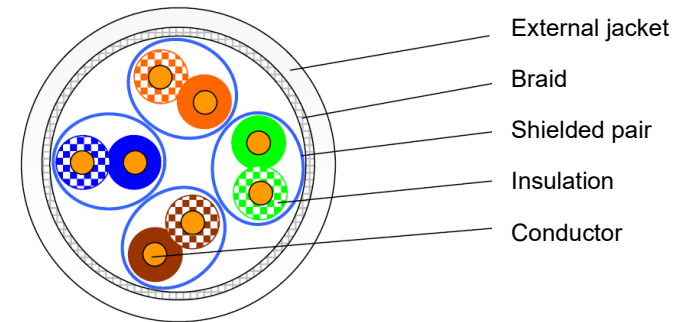
Colour: white

CPR: Dca

Maximum supplied length per VPE: 1000 m

Order numbers:

- 1000 m disposable drum: 047A0019-1000
- 500 m disposable drum: 047A0019-500
- 305 m REELEX Box 20-inch 047A0019-300



#### Rosenberger OSI cable F/FTP cat.6A

4x2xAWG 23/1

500MHz

FRNC-LSZH

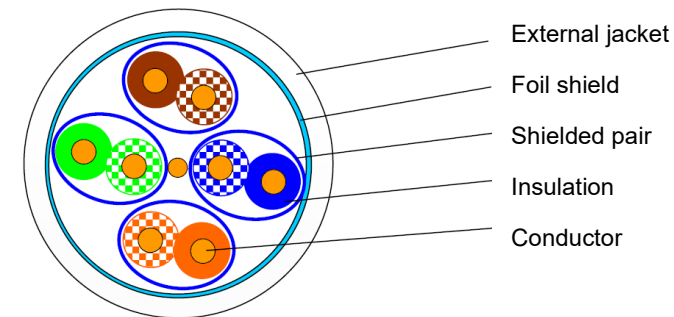
Colour: White

CPR: Dca

Maximum supplied length per VPE: 1000 m

Order numbers:

- 1000 m disposable drum: 047A0022-1000
- 500 m disposable drum: 047A0022-500
- 305 m REELEX Box 20-inch 047A0022-300



#### Rosenberger OSI cable F/UTP cat. 6A

4x2x AWG 23/1

500MHz

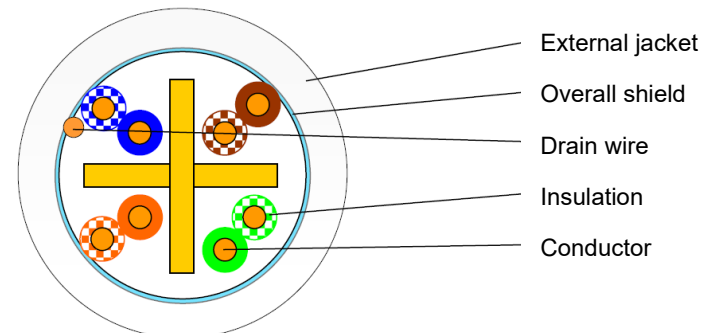
FRNC-LSZH

Colour: white

CPR: Dca

Order numbers:

- 1000 m disposable drum: 047A0025-1000
- 500 m disposable drum: 047A0025-500
- 305 m REELEX Box 20-inch 047A0025-300



## PreCONNECT® isoNET cabling system

### Copper solution

#### 19" copper panel to accommodate 24 Keystone modules 0.5 HU:

Material: Stainless steel  
Depth: 100 mm

Order number: 800A0220



#### 19" copper panel to accommodate 24 Keystone modules 1 HU:

Material: Powder-coated sheet steel  
Depth: 150 mm

Order numbers:

RAL 7035 light grey: 800A0213

RAL 9005 black: 800A0214



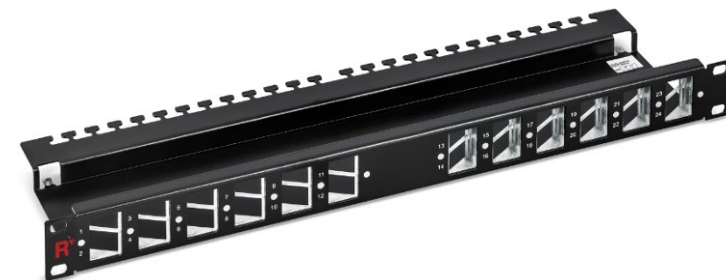
#### 19" copper panel to accommodate 24 Keystone modules, 30° external cable routing, 1 HU:

Material: Powder-coated sheet steel  
Depth: 120 mm

Order numbers:

RAL 7035 light grey: 800A0219

RAL 9005 black: 800A0218



## PreCONNECT® isoNET cabling system

### Copper solution:

#### RJ45 Keystone module, cat. 6<sub>A</sub> screened:

- For AWG24-22 solid wires
- ISO/IEC 11801 and DIN EN 50173-1
- PoE+ DIN IEC 60512-99-011:2013 and DIN IEC 60512-9-3:2010
- Zinc die-casting, silver
- With dust protection flap
- GHMT PVP certificate no.: z4686a-xx-D

Order number: 800A0002

#### RJ45 Keystone module, cat. 6 unshielded:

Suitable for AWG26-22 solid wires, black plastic, ivory on request

Order number: 800A0005

#### RJ45 Keystone module, cat. 6<sub>A</sub> unshielded:

Suitable for AWG26-22 solid wires, black plastic, ivory on request

Order number: 800A0006

#### LC-duplex adapters in Keystone adapter frame:

Order numbers:

OM4 violet: 120A0361OM4

SM blue: 120A0360



**PreCONNECT® isoNET cabling system**

**Copper solution:**

**RJ45 patchcords:**

**RJ45, patchcord, cat. 6A screened:**

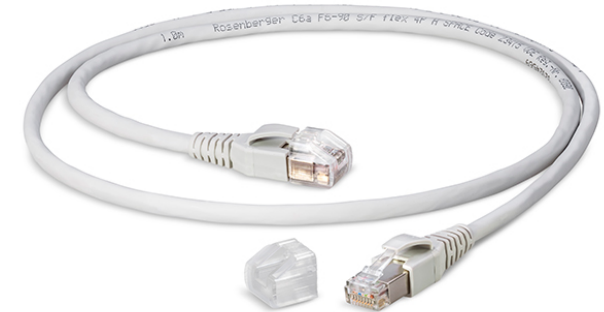
Cat. 6A ISO/IEC, allocation 1:1, GHMT PVP certificate no.: z4826a-xx-D

RJ45 connector screened on both sides with 2-component kink protection with engaging lever protection and protective cap

Cable type: Cat.7, S/FTP, flex, 4 PiMF AWG27/7, up to 900 MHz, FRNC-LSZH

Colour: grey

Other lengths, colours and types available on request



Lengths	Order numbers
1 metres	820A1019M-1
2 metres	820A1019M-2
3 metres	820A1019M-3
5 metres	820A1019M-5
10 metres	820A1019M-10

**RJ45, patchcord, cat. 6 unscreened:**

Cat. 6 ISO/IEC, allocation 1:1

RJ45 connector unscreened on both sides

Cable type: Cat.6 U/UTP 4x2xAWG24/7, FRNC-LSZH

Colour: grey

Other lengths, colours and types available on request



Lengths	Order numbers
1 metres	820A0978M
2 metres	820A0979M
3 metres	820A0980M
5 metres	820A0981M
10 metres	820A0982M



## PreCONNECT® isoNET cabling system

### Racks & distributors

#### Racks: Central distributor IP 20:

- Disassemblable steel section rack frame
- Two lateral door inserts with locking mechanism
- Front and back perforated sheet door with three-point locking (free perforated sheet cross-section 80%)
- Possibility of installing a profile half cylinder lock
- 19" level 42 HU, front and back
- Top with cable passage capability and/or installation of fan module
- Base plinth provided separately
- Cover plates in floor area, removable for cable insertion
- For W=800 mm: Metal cable clips 66 mm x 125 mm at front 19" level (set=10 items)
- Earthing set (mounted)
- Set of M5 screws (50 items)

#### Surface:

Cladding parts/plinth: painted RAL 7035 light grey

Design sections: painted RAL 3002 crimson red, other colours on request

#### Type of delivery:

Fully assembled, plinth provided separately

**RAL 7035 light grey: 142A5001**



## PreCONNECT® isoNET cabling system

### Racks & distributors

#### Floor distributor: 19" free-standing distributor

- Developed for flexible use in the office environment
- Optimum, rapid access thanks to the removable cladding parts
- Stable, welded frame construction
- Panel combination: D=700 mm, W=600 mm
- Pre-perforated areas for the insertion of cables in the top and base sections
- Possibility of housing a fan module in the top and base sections
- Two-way door hinges
- Doors with swivel handle, possibility of incorporating DIN profile half cylinder locks
- Cover and side panels with turnbuckle-type fast-locking mechanisms
- Many different possible configurations
- Large range of accessory parts

#### Technical information

Material: Sheet steel,

Aluminium cover

Surface: Powder-coated, RAL 7035 light grey

Side panels in RAL 7037 dust-grey

#### Type of delivery:

Assembled

**9 HU RAL 7035 light grey 142A5011**

**15 HU RAL 7035 light grey 142A5012**

**19 HU RAL 7035 light grey 142A5013**



## PreCONNECT® isoNET cabling system

### Racks & distributors

#### Floor distributor: Wall distributor

- Protection type IP 54
- Visually attractive panel
- Space-saving construction
- Stable basic construction
- 2 doors with swivel handle lock and three-point locking
- Integrated viewing window on one side
- Removable front cover
- Doors with 180° hinges for optimum accessibility
- Profile half cylinder lock: Two-way key bit 5 mm
- Integrated cable flange plates
- Installation dimensions as per IEC 60297-3-100
- Integrated outlet filter (IP 54) for fan installation

#### LAN wall distribution panel, 4 HU

Dimensions: H=230 mm, W=506 mm, D=536 mm

With 19" level, 4 HU, aligned vertically with the supporting wall.

#### 4 HU RAL 7035 light grey 142A5021

#### LAN wall distribution panel, 6 HU

Dimensions: H=360 mm, W=557 mm, D=636 mm

With 19" level, 6 HU, aligned vertically with the supporting wall.

#### 6 HU RAL 7035 light grey 142A5022



## PreCONNECT® isoNET cabling system

### Racks & distributors

#### Floor distributor: Wall distributor 9-19 HU

- Developed for flexible use in the office environment
- Optimum, rapid access thanks to the removable cladding parts
- Stable, welded frame construction
- Panel combination: D=400 mm, W=600 mm
- Pre-perforated areas for the insertion of cables in the top and base sections
- Possibility of housing a fan module in the top and base sections
- Two-way door hinges
- Doors with swivel handle, possibility of incorporating DIN profile half cylinder locks
- Cover and side panels with turnbuckle-type fast-locking mechanisms
- Many different possible configurations
- Large range of accessory parts

#### Technical information

Material: Sheet steel, Aluminium cover

Surface: Powder-coated, RAL 7035 light grey

Side panels in RAL 7037 dust-grey

#### Type of delivery:

Assembled

**9 HU RAL 7035 light grey 142A5023**

**15 HU RAL 7035 light grey 142A5024**

**19 HU RAL 7035 light grey 142A5025**



## PreCONNECT® isoNET cabling system

### Accessories:

#### Universal cable support for PreCONNECT® square interface

111L0650

For supporting cables of all types in the “PreCONNECT® way”,  
Tool-free installation with simple insertion.  
Suitable for cable diameters from 6 mm to 18 mm



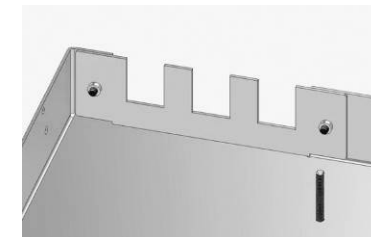
#### Support for 6 cable glands up to PG 16

111L0417



#### Support for 6 PreCONNECT® trunks

111L0425



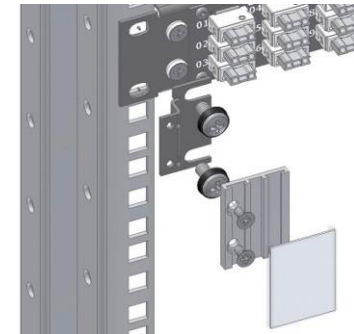
## PreCONNECT® isoNET cabling system

### Accessories:

#### 19" 1 HU labelling field

171A0002

- Powder-coated steel sheet, RAL 9005 black



#### 19" 1 HU patchcord guide

111A0450

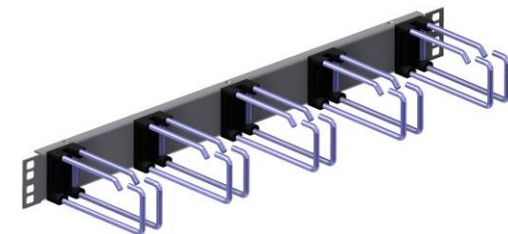
- Powder-coated steel sheet, RAL 7035 light grey
- Cable clip, PA black, L=56 mm



#### 19" 1 HU patchcord guide

111A0469

- Powder-coated steel sheet, RAL 7035 light grey
- Cable clip, metal, L=110 mm



**PreCONNECT® isoNET cabling system**

**Accessories:**

**Keystone connecting socket 45x45 mm  
1 port unoccupied, pure white**

**114L1001**

- Insertion direction of module, inclined approx. 30° downwards



**Keystone connecting socket 45x45 mm  
2 port unoccupied, pure white**

**114L1002**

- Insertion direction of module, inclined approx. 30° downwards



**Keystone connecting socket 80x80 mm 1 port unoccupied,  
pure white**

**114L1011**

**Keystone connecting socket 80x80 mm 2 port unoccupied,  
pure white**

**114L1012**

**Connecting socket 4x LCD, 9µm pure white UP**  
**Connecting socket 4x LCD, 50µmOM3 pure white UP**  
**Connecting socket 4x LCD, 50µmOM4 pure white UP**

**114L0041**  
**114L0102OM3**  
**114L0102OM4**



**Connecting socket 4x LCD, 9µm pure white AP**  
**Connecting socket 4x LCD, 50µmOM3 pure white AP**  
**Connecting socket 4x LCD, 50µmOM4 pure white AP**

**114L0161**  
**114L0212OM3**  
**114L0212OM4**



**Cable reserve 50 mm**

**114L0320**

## About Rosenberger OSI

Ever since 1991, Rosenberger Optical Solutions & Infrastructure (Rosenberger OSI) has been an acknowledged expert in the field of optical fiber-based connection technology, cabling solutions and infrastructure services for datacenters, LANs, wireless networks and industrial applications.

As an integrated solution provider, we have considerable development expertise and excel in the operational production of system solutions for communications networks. Our comprehensive services permit the secure, efficient operation of digital infrastructures. This combination combined with our commitment to our customers makes us unique and a strong partner in the global market.

Since 1998, Rosenberger OSI has been part of the globally active Rosenberger Group, one of the world's leading suppliers of high-frequency, high-voltage and fiber-optic connection solutions which has its head office in Germany.

You can find further information at [www.rosenberger.com/osi](http://www.rosenberger.com/osi)

# Rosenberger

**Rosenberger-OSI GmbH & Co. OHG**

Optical Solutions & Infrastructure | Endorferstr. 6 | 86167 Augsburg | Phone: +49 821 24924-0  
info-osi@rosenberger.com | [www.rosenberger.com/osi](http://www.rosenberger.com/osi)

Rosenberger® is a registered trademark of Rosenberger Hochfrequenztechnik GmbH & Co. KG. All rights reserved. © Rosenberger 2021

For technical reasons, we must reserve the right to make changes compared to the depictions printed in the product information.  
Transfer to a third party only with the agreement of Rosenberger-OSI GmbH & Co. OHG. All rights reserved

Created: 22/02/2021  
In effect since: 22/02/2021  
Revision 001