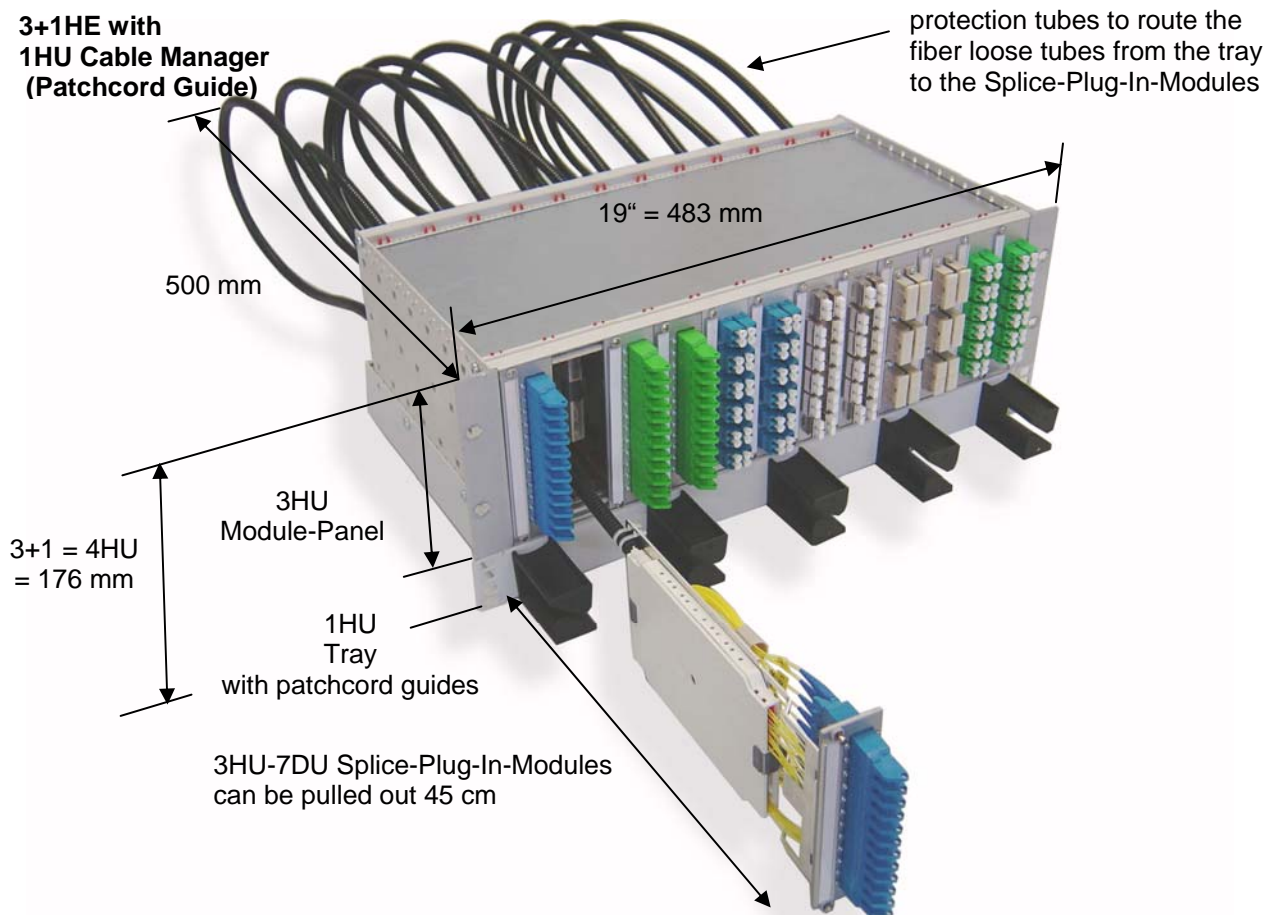


19" 3+1 HU Splice Module-Panel

For up to 144 channels (288 fibers)

3+1HU Module-Panel for installation in 19" cabinets and racks. Hole pattern acc. to DIN IEC 60297-3 in 84 divided units (DU) ready to accept up to 12 single 3HU-7DU Splice-Plug-In-Modules with integrated pigtail reservoir and splice cassettes.

3+1HE with 1HU Cable Manager (Patchcord Guide)



This **panel system** is a modular and through this highly flexible platform for splice cabling with fiber loose tube cables and pigtails with all common patchfield connectivity systems.

Different patchfield connectivity systems and fiber types can be installed in one Module-Panel through the modular design.

Fast and easy installation and secure service (e.g. cleaning or repair) through the modular design and the routing of the fiber loose tubes inside of protection tubes from the tray to the Splice-Plug-In-Modules.

The **1HU Tray** is used for fixing the fiber loose tube cables with cable glands and to store the fiber loose tube reserve. It's front is assembled with guides for fiber-like guidance of patchcords.

3HU-7DU Splice-Plug-In-Modules:

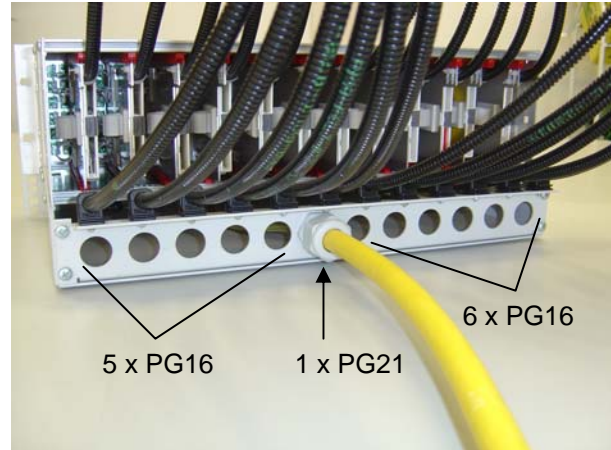
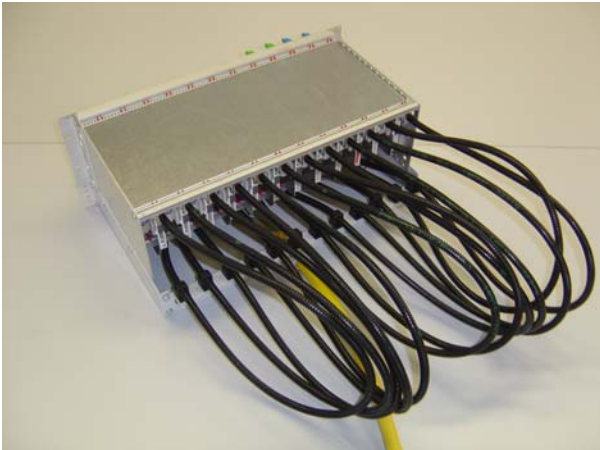
With ready for splicing factory assembled splice cassettes with pigtail bundle cable without its transparent jacket, whose 0.9mm buffers and the fibers inside of these are colored in 12 different colors acc. to DIN VDE 0888.

Deliverable with all common patchfield connectivity systems and fiber types.

The Splice-Plug-In-Modules are guided through guide rails inside the Module-Panel and can be pulled out 45 cm. The protection tubes are protecting the fiber loose tubes ideal against kinking while pushing and pulling of the Splice-Plug-In-Modules.

Individual front labeling possible through labeling fields at each Splice-Plug-In-Module.

19" 3+1 HU Splice Module-Panel



Installation example:

Fiber loose tube cable 12x12 = 144 fibers.
Each 12 fiber single fiber loose tube is guided inside of one protection tube from the tray to the single 3HU-7DU 12 Splice-Plug-In-Modules assembled with 12 fiber pigtailed each.

Up to 12 single fiber loose tube cables can be fixed at the rear side of the 1HU Tray with 11 x PG16 and 1 x PG21 cable glands. Cable guidance straight backwards.



3+1HU with 1HU Cable Manager (Patchcord Guide)
Partnumber: 141A0001



3+2HU with 2HU Cable Manager (Patchcord Guide)
Partnumber: 141A0009



3+1HU without Cable Manager (Patchcord Guide)
for flexible use with the 1 or 2HU Cable Manager shown at the next page, which must be ordered separat
Partnumber: 141A0010

19" 3+1 HU Splice Module-Panel

1HU Patchcord Guide and 2HU Cable Manager

19" 1 HE PATCHKABELFÜHRUNG RAL 7035
19" 1 HU patchcord guide

111A0450



19" 2 HE HORIZONTAL-KABELMANAGER RAL 9005
19" 2 HU horizontal cable manager

111A0451



Properties:

up to 12 single loose tube cables can be fixed in the 1 HU tray with 11 x PG 16 and 1 x PG 21 cable glands
 cable guidance straight backwards

the loose tube reserve has to be stored in the 1 HU tray and fed to the modules through protection tubes
 these tubes protect loose tubes against kinking while installing the splice plug-in modules

the modules are guided by guide rails inside the enclosure and can be pulled out completely

matrix numbering of the modules:

channels in modules = 1 to n in labeling fields

modules in module panel = 1 to n number clips

(example: channel 3 - 4 means in module 3 channel 4)

Material and color:

- 3HU Module-Panel front: Aluminum silver anodized
- 3HU Module-Panel body: Aluminum natural and steel galvanized
- 1HU Tray: Aluminum powder coated RAL 7035 (lightgrey)
- 1HU Patchcord Guide: Aluminum powder coated RAL 7035 (lightgrey) and black plastic
- 2HU Cable Manager: Aluminum powder coated RAL 9005 (black) and black plastic

Weight:

- 3HU Module-Panel with 1HU Tray unassembled (empty): Approx. 2 kg
- 3HU-7DU Splice-Plug-In-Modules: Approx. 0,5 kg

Delivery form:

3HU Module-Panel with 1HU Tray completely factory assembled without cable glands

3HU-7DU Splice-Plug-In-Modules completely factory assembled incl.

- ready for splicing assembled pigtail bundle
- FO couplers
- splice-holders and protectors
- cassette-cover
- loose tube protection tube
- labelling field and screws