

## SMAP Smart Panel - modular 19" Panel system

**Name history:** The very first name of this 19" Panel system was „HDGS-G2“, later „Smart Plug“ and now „SMAP“ which stands for „Smart Panel“.

PreCONNECT® SMAP 19" is a panel system with outstanding modularity. During its development we have combined our extensive experience with today's market requirements in FO Distribution and Splice Panels for LAN and Data-Centre cabling.

The supreme modularity of the panel (actually it is a modular construction system) is realised through the Partfrontplate PFP design (1) with 1HU ½ or 1/3 Partfrontplates and the modular design of the panel's back planes (2).

The modular part front plate design supports the mounting of different FO connectivity systems within one panel with cost efficient ease. In addition, the panels can be upgraded or swapped over. For ease of identification the Partfrontplates have a matrix labelling of the channels - for a detailed description please see page 10.

The modular design of the panel back planes generates superior flexibility for the configuration of the required cable entries. Through this custom design special solutions are easy and cost efficient to realise. The standard configuration of the back planes is described and shown in the detail descriptions of the several panels on the following pages.

Optional labelling fields are available for your individual panel addressing (3). In spite of their light weight the panels are extremely robust.

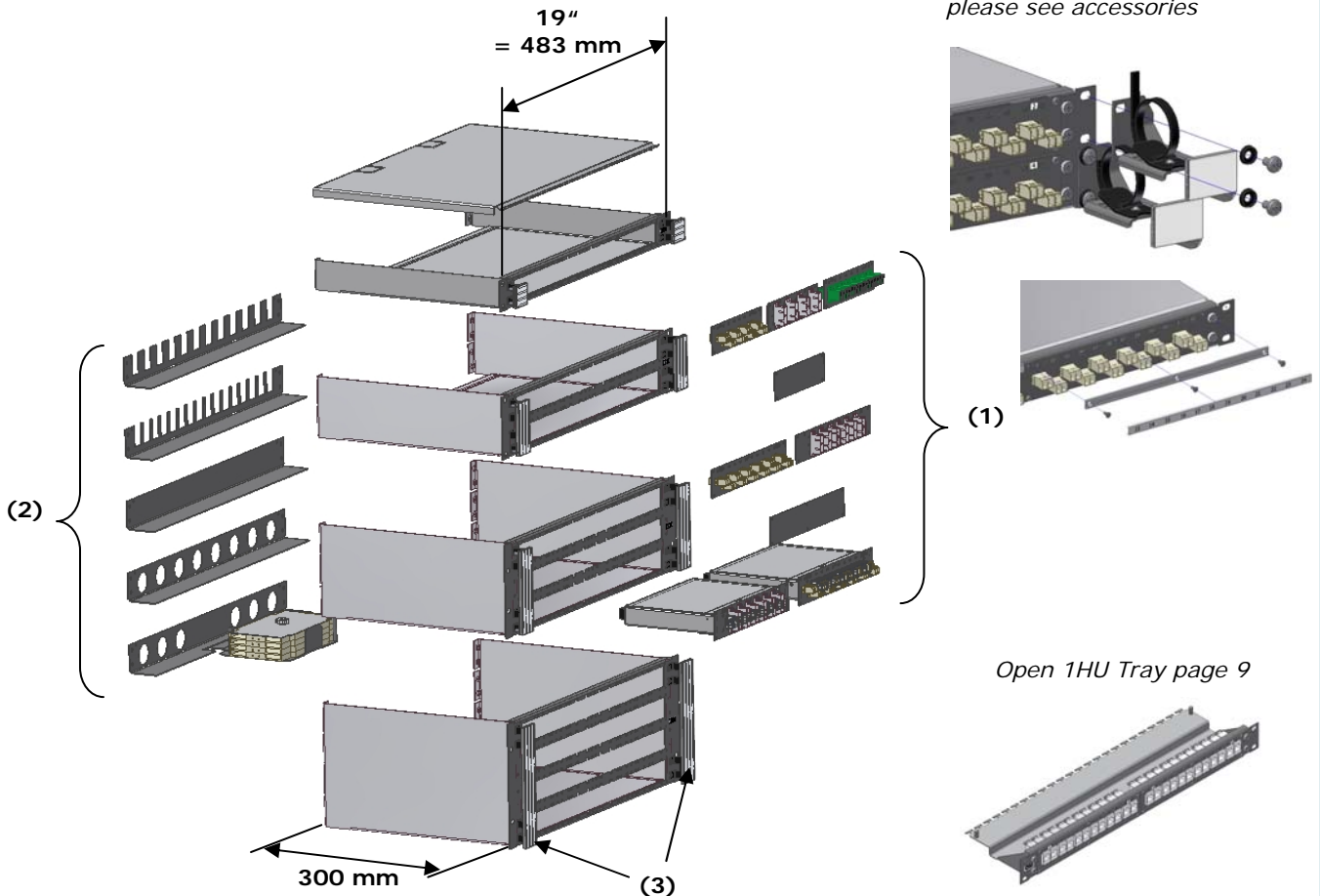
Material and colour:

Front = steel powder coated RAL9005 black

Body = aluminium (natural)

Back planes = steel powder coated RAL9005 black

*for optional Patchcord Guides and labelling fields please see accessories*



## SMAP Smart Panel - modular 19" Panel system

### SMAP 19" Distribution Panels for PreCONNECT® Trunk Cables

Our well known square interfaces in the panel's back planes facilitate tool-less mounting (simple hook in) of the Cable-Dividers of our PreCONNECT® Trunk Cables. This makes our PreCONNECT® System a real „Plug-and-Play solution“.

The standard configuration of the panel's back planes shown below have a maximum capacity of 12 of our PreCONNECT® Trunk cables per panel.

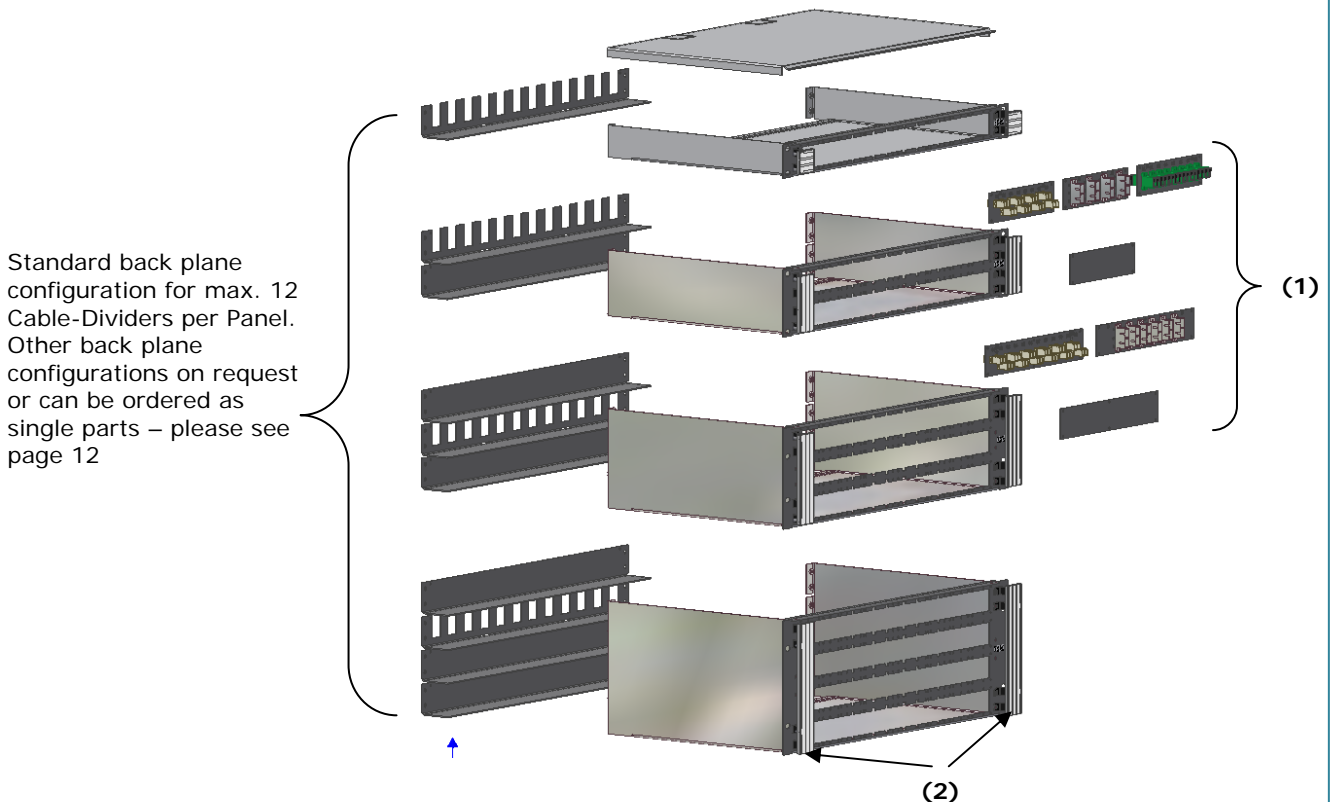
For custom-designed requirements back plane configurations with higher capacity can be ordered. This enables upgrading of the panels to support the maximum possible number of Trunk Cables per Panel. This is particularly required in SAN and Serverfarm networks, where many Trunk Cables with low numbers of fibers must be installed in one panel.

For individual upgrades of existing panels back panel parts can be ordered separately – please see page 12.

For the possible number of channels per FO connectivity system and Panel height unit HU please see page 3.

To upgrade or modify the panel configuration Partfrontplates (1) can be ordered separately – please see page 10.

For the optional labelling fields for your individual Panel addressing (2) please see page 12.



## SMAP Smart Panel - modular 19" Panel system

### SMAP 19" Distribution Panels RAL9005 black partnumbers

SMAP 19" 1HU Distribution Panels with couplers			
coupler type/number of channels /fibers/number of PFP type	for fiber type		
	Singlemode E9/125µm	Multimode OM3 G50/125µm	Multimode OM4 G50/125µm
MU-Duplex-H / 4 Ch / 8 F / 1x1/2	161A0421	161A0441OM3	161A0441OM4
MU-Duplex-H / 6 Ch / 12 F / 1x1/2	161A0422	161A0442OM3	161A0442OM4
MU-Duplex-H / 8 Ch / 16 F / 1x1/2	161A0423	161A0443OM3	161A0443OM4
MU-Duplex-H / 12 Ch / 24 F / 1x1/2	161A0424	161A0444OM3	161A0444OM4
MU-Duplex-H / 16 Ch / 32 F / 1x1/2	161A0425	161A0445OM3	161A0445OM4
MU-Duplex-H / 18 Ch / 36 F / 1x1/2	161A0426	161A0446OM3	161A0446OM4
MU-Duplex-H / 24 Ch / 48 F / 1x1/2	161A0427	161A0447OM3	161A0447OM4
MU-Duplex-H / 32 Ch / 64 F / 2x1/2	161A0428	161A0448OM3	161A0448OM4
MU-Duplex-H / 36 Ch / 72 F / 2x1/2	161A0429	161A0449OM3	161A0449OM4
MU-Duplex-H / 48 Ch / 96 F / 2x1/2	161A0430	161A0450OM3	161A0450OM4
LC-Duplex / 4 Ch / 8 F / 1x1/3	161A0121	161A0131OM3	161A0131OM4
LC-Duplex / 6 Ch / 12 F / 1x1/3	161A0122	161A0132OM3	161A0132OM4
LC-Duplex / 8 Ch / 16 F / 1x1/3	161A0123	161A0133OM3	161A0133OM4
LC-Duplex / 12 Ch / 24 F / 1x1/2 (12)	161A0154	161A0164OM3	161A0164OM4
LC-Duplex / 16 Ch / 32 F / 2x1/3	161A0125	161A0135OM3	161A0135OM4
LC-Duplex / 18 Ch / 36 F / 1x1/2 (18)	161A0156	161A0166OM3	161A0166OM4
LC-Duplex / 24 Ch / 48 F / 2x1/2 (12)	161A0157	161A0167OM3	161A0167OM4
LC-Duplex / 36 Ch / 72 F / 2x1/2 (18)	161A0158	161A0168OM3	161A0168OM4
LC-Quad / 48 K / 96 F / 2x1/2	161A0159	161A0169OM3	161A0169OM4
SC-Duplex / 4 Ch / 8 F / 1x1/3	161A0181	161A0191OM3	161A0191OM4
SC-Duplex / 6 Ch / 12 F / 1x1/2	161A0212	161A0222OM3	161A0222OM4
SC-Duplex / 8 Ch / 16 F / 2x1/3	161A0183	161A0193OM3	161A0193OM4
SC-Duplex / 12 Ch / 24 F / 2x1/2	161A0214	161A0224OM3	161A0224OM4

SMAP 19" 2HU Distribution Panels with couplers			
coupler type/number of channels /fibers/number of PFP type	for fiber type		
	Singlemode E9/125µm	Multimode OM3 G50/125µm	Multimode OM4 G50/125µm
MU-Duplex-H / 64 Ch / 128 F / 3x1/2	162A0611	162A0631OM3	162A0631OM4
MU-Duplex-H / 72 Ch / 144 F / 3x1/2	162A0612	162A0632OM3	162A0632OM4
MU-Duplex-H / 96 Ch / 192 F / 4x1/2	162A0613	162A0633OM3	162A0633OM4
LC-Duplex / 32 Ch / 64 F / 4x1/3	162A0158	162A0173OM3	162A0173OM4
LC-Duplex / 36 Ch / 72 F / 3x1/2 (12)	162A0204	162A0219OM3	162A0219OM4
LC-Duplex / 48 Ch / 96 F / 4x1/2 (12)	162A0205	162A0220OM3	162A0220OM4
LC-Duplex / 72 Ch / 144 F / 4x1/2 (18)	162A0206	162A0221OM3	162A0221OM4
LC-Quad / 96 Ch / 192 F / 4x1/2	162A0207	162A0222OM3	162A0222OM4
SC-Duplex / 16 Ch / 32 F / 4x1/3	162A0245	162A0260OM3	162A0260OM4
SC-Duplex / 18 Ch / 36 F / 3x1/2	162A0291	162A0306OM3	162A0306OM4
SC-Duplex / 24 Ch / 48 F / 4x1/2	162A0292	162A0307OM3	162A0307OM4

## SMAP Smart Panel - modular 19" Panel system

### SMAP 19" Distribution Panels RAL9005 black partnumbers

#### SMAP 19" 3HU Distribution Panels with couplers

coupler type/number of channels /fibers/number of PFP type	for fiber type		
	Singlemode E9/125µm	Multimode OM3 G50/125µm	Multimode OM4 G50/125µm
MU-Duplex-H / 144 Ch / 288 F / 6x1/2	163A0614	163A0634OM3	163A0634OM4
LC-Duplex / 64 Ch / 128 F / 8x1/3	163A0161	163A0176OM3	163A0176OM4
LC-Duplex / 72 Ch / 144 F / 6x1/2 (12)	163A0207	163A0222OM3	163A0222OM4
LC-Duplex / 108 Ch / 216 F / 6x1/2 (18)	163A0208	163A0223OM3	163A0223OM4
LC-Quad / 144 Ch / 288 F / 6x1/2	163A0209	163A0224OM3	163A0224OM4

#### SMAP 19" 4HU Distribution Panels with couplers

coupler type/number of channels /fibers/number of PFP type	for fiber type		
	Singlemode E9/125µm	Multimode OM3 G50/125µm	Multimode OM4 G50/125µm
MU-Duplex-H / 192 Ch / 348 F / 8x1/2	164A0615	164A0635OM3	164A0635OM4
LC-Duplex / 96 Ch / 192 F / 8x1/2 (12)	164A0208	164A0223OM3	164A0223OM4
LC-Duplex / 144 Ch / 288 F / 8x1/2 (18)	164A0209	164A0224OM3	164A0224OM4
LC-Quad / 192 Ch / 348 F / 8x1/2	164A0210	164A0225OM3	164A0225OM4
SC-Duplex / 48 Ch / 96 F / 8x1/2	164A0295	164A0310OM3	164A0310OM4
SC-Duplex / 32 Ch / 64 F / 8x1/3	163A0248	163A0263OM3	163A0263OM4
SC-Duplex / 36 Ch / 72 F / 6x1/2	163A0294	163A0309OM3	163A0309OM4

Distribution Panels with other numbers of channels and with other/mixed configurations of FO connectivity systems are available on request.

## SMAP Smart Panel - modular 19" Panel system

### SMAP 19" Distribution Panels with MTP®-Modules

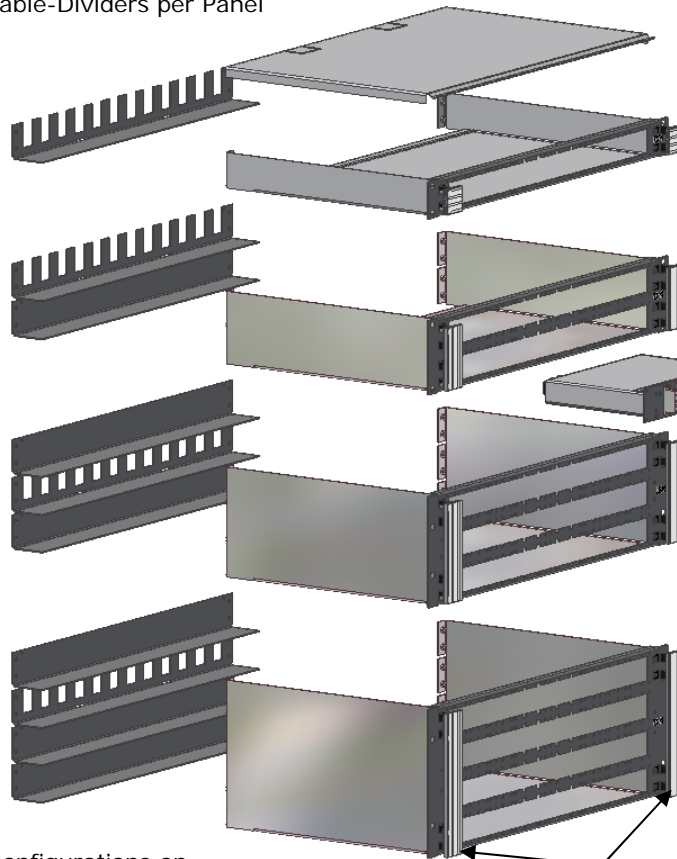
To enhance our highly successful PreCONNECT® HIGH-DENSITY System, incorporating Trunk Cables with 12 fiber MTP® connectors, we have developed the 1HU MTP®-Modules with 1/2 PFP for our SMAP Panel system (as shown below).

The maximum possible number of channels per FO connectivity system in the Module's front and subsequently the possible number of channels per panel height unit HU is limited through the space needed for the FO connectivity system in the front. It is also constrained to 12 fiber steps due to the 12 fiber MTP® connector. For the possible number of channels please see page 6.

For the optional labelling fields for your individual panel addressing (2) please see page 12.

To upgrade or modify the panel's configuration MTP®Modules can be ordered separately – please see page 11.

standard back plane configuration for max. 12 Cable-Dividers per Panel



MTP® = MPO  
12 fiber



interfaces in the Module's back plane

for details of the MTP®-Modules see page 11.

other back plane configurations on request or can be ordered as single parts – please see page 12

(2)

## SMAP Smart Panel - modular 19" Panel system

### SMAP 19" Distribution Panels with MTP®-Modules RAL9005 black partnumbers

<b>SMAP 19" 1HU Distribution Panels with MTP®-Modules (with 12F MTP®)</b>			
coupler type/number of channels /fibers/number of Modules	for fiber type		
	Singlemode E9/125µm	Multimode OM3 G50/125µm	Multimode OM4 G50/125µm
LC-Duplex / 12 Ch / 24 F / 1	161A2000	161A2010OM3	161A2010OM4
LC-Duplex / 24 Ch / 48 F / 2	161A2001	161A2011OM3	161A2011OM4
LC-Duplex / 36 Ch / 72 F / 2	161A2002	161A2012OM3	161A2012OM4
LC-Quad / 48 Ch / 96 F / 2	161A2007	161A2017OM3	161A2017OM4
SC-Duplex / 6 Ch / 12 F / 1	161A2005	161A2015OM3	161A2015OM4
SC-Duplex / 12 Ch / 24 F / 2	161A2006	161A2016OM3	161A2016OM4

<b>SMAP 19" 2HU Distribution Panels with MTP®-Modules (with 12F MTP®)</b>			
coupler type/number of channels /fibers/number of Modules	for fiber type		
	Singlemode E9/125µm	Multimode OM3 G50/125µm	Multimode OM4 G50/125µm
LC-Duplex / 36 Ch / 72 F / 3	162A2002	162A2017OM3	162A2017OM4
LC-Duplex / 48 Ch / 96 F / 4	162A2003	162A2018OM3	162A2018OM4
LC-Duplex / 72 Ch / 144 F / 4	162A2004	162A2019OM3	162A2019OM4
LC-Quad / 96 Ch / 192 F / 4	162A2013	162A2028OM3	162A2028OM4
SC-Duplex / 18 Ch / 36 F / 3	162A2011	162A2026OM3	162A2026OM4
SC-Duplex / 24 Ch / 48 F / 4	162A2012	162A2027OM3	162A2027OM4

<b>SMAP 19" 3HU Distribution Panels with MTP®-Modules (with 12F MTP®)</b>			
coupler type/number of channels /fibers/number of Modules	for fiber type		
	Singlemode E9/125µm	Multimode OM3 G50/125µm	Multimode OM4 G50/125µm
LC-Duplex / 60 Ch / 120 F / 5	163A2004	163A2024OM3	163A2024OM4
LC-Duplex / 72 Ch / 144 F / 6	163A2005	163A2025OM3	163A2025OM4
LC-Duplex / 108 Ch / 216 F / 6	163A2006	163A2026OM3	163A2026OM4
LC-Quad / 144 Ch / 288 F / 6	163A2019	163A2039OM3	163A2039OM4
SC-Duplex / 30 Ch / 60 F / 5	163A2017	163A2037OM3	163A2037OM4
SC-Duplex / 36 Ch / 72 F / 6	163A2018	163A2038OM3	163A2038OM4

<b>SMAP 19" 4HU Distribution Panels with MTP®-Modules (with 12F MTP®)</b>			
coupler type/number of channels /fibers/number of Modules	for fiber type		
	Singlemode E9/125µm	Multimode OM3 G50/125µm	Multimode OM4 G50/125µm
LC-Duplex / 84 Ch / 168 F / 7	164A2006	164A2036OM3	164A2036OM4
LC-Duplex / 96 Ch / 192 F / 8	164A2007	164A2037OM3	164A2037OM4
LC-Duplex / 144 Ch / 288 F / 8	164A2008	164A2038OM3	164A2038OM4
LC-Quad / 192 Ch / 384 F / 8	164A2025	164A2055OM3	164A2055OM4
SC-Duplex / 42 Ch / 84 F / 7	164A2023	164A2053OM3	164A2053OM4
SC-Duplex / 48 Ch / 96 F / 8	164A2024	164A2054OM3	164A2054OM4

## SMAP Smart Panel - modular 19" Panel system

### SMAP 19" Splice-Panels

For splice cabling our SMAP Panel system contains Splice-Panels too. You can order SMAP Splice-Panels with our „factory assembled splice cassettes“ (1). This solution is particularly favoured by installers/splicers because of its unbeatable time saving potential and handling security whilst splicing. Details of our „factory assembled splice cassettes “ (1) will be found on [www.rosenberger-osi.de](http://www.rosenberger-osi.de).

The standard configuration of the panel`s back planes shown below have a maximum capacity for 6 PG21 cable glands per panel. For custom-designed requirements back plane configurations with other capacities can be ordered. For individual upgrades of existing panels back panel parts can be ordered separate on page 12.

For the possible number of channels per FO connectivity system and panel height unit HU please see page 8.

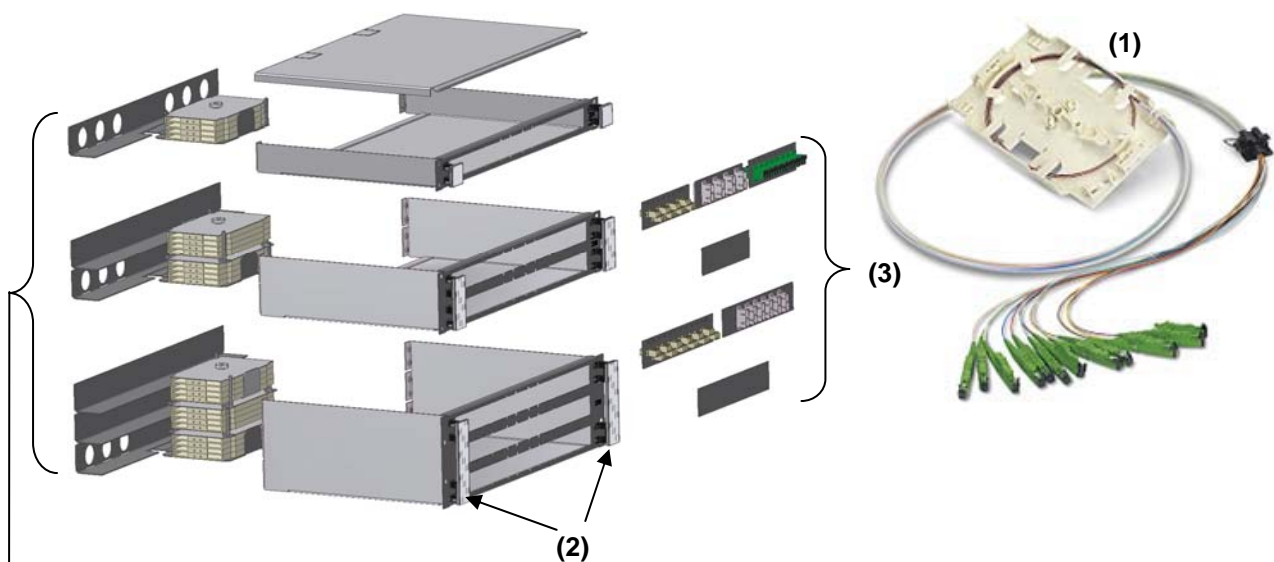
For the optional labelling fields for your individual panel addressing (2) please see page 12.

To upgrade or modify the panel configuration Partfrontplates(3) can be ordered separately – please see page 10. Our „factory assembled splice cassettes with 12 fiber Pigtail-bundle-cables“ can be found on [www.rosenberger-osi.de](http://www.rosenberger-osi.de).

While ordering, our inside sales department will ask if you like to order the SMAP Splice-Panels with our „factory assembled splice cassettes“ (1), if you have demand for splice-protectors and splice-holders and for the size and number of the PG cable glands you might need.

On request we can deliver the Splice-Panels without our „factory assembled splice cassettes with 12 fiber Pigtail-bundle-cables“.

On request our 4HU SMAP panels are deliverable as splice panels as well. But we can not recommend this, because the high number of fibers within the panel are not secure to handle whilst installation and splicing.



standard back plane configuration for max. 4 splice cassettes (SPC) per height unit HU and 6 PG21 cable glands per panel. → 1HU = 4 SPC, 2HU = 8 SPC, 3HU = 12 SPC.

Other back plane configurations on request or can be ordered as single parts – please see page 12

## SMAP Smart Panel - modular 19" Panel system

### SMAP 19" Splice-Panels RAL9005 black partnumbers

SMAP 19" 1HU Splice-Panels			
coupler type/number of channels /fibers/number of PFP type	for fiber type		
	Singlemode E9/125µm	Multimode OM3 G50/125µm	Multimode OM4 G50/125µm
MU-Duplex-H / 6 Ch / 12 F / 1x1/2	161A3080	161A3090OM3	161A3090OM4
MU-Duplex-H / 12 Ch / 24 F / 1x1/2	161A3081	161A3091OM3	161A3091OM4
MU-Duplex-H / 18 Ch / 36 F / 1x1/2	161A3082	161A3092OM3	161A3092OM4
MU-Duplex-H / 24 Ch / 48 F / 1x1/2	161A3083	161A3093OM3	161A3093OM4
MU-Duplex-H / 36 Ch / 72 F / 2x1/2	161A3084	161A3094OM3	161A3094OM4
MU-Duplex-H / 48 Ch / 96 F / 2x1/2	161A3085	161A3095OM3	161A3095OM4
LC-Duplex / 6 Ch / 12 F / 1x1/3	161A3020	161A3030OM3	161A3030OM4
LC-Duplex / 12 Ch / 24 F / 1x1/2 (12)	161A3041	161A3051OM3	161A3051OM4
LC-Duplex / 18 Ch / 36 F / 2x1/2 (12)	161A3042	161A3052OM3	161A3052OM4
LC-Duplex / 24 Ch / 48 F / 2x1/2 (12)	161A3043	161A3053OM3	161A3053OM4
SC-Duplex / 6 Ch / 12 F / 1x1/2	161A3070	161A3075OM3	161A3075OM4
SC-Duplex / 12 Ch / 24 F / 2x1/2	161A3071	161A3076OM3	161A3076OM4

SMAP 19" 2HU Splice-Panels			
coupler type/number of channels /fibers/number of PFP type	for fiber type		
	Singlemode E9/125µm	Multimode OM3 G50/125µm	Multimode OM4 G50/125µm
MU-Duplex-H / 64 Ch / 128 F / 3x1/2	162A3100	162A3110OM3	162A3110OM4
MU-Duplex-H / 72 Ch / 144 F / 3x1/2	162A3101	162A3111OM3	162A3111OM4
MU-Duplex-H / 96 Ch / 192 F / 4x1/2	162A3102	162A3112OM3	162A3112OM4
LC-Duplex / 36 Ch / 72 F / 3x1/2 (12)	162A3040	162A3050OM3	162A3050OM4
LC-Duplex / 48 Ch / 96 F / 4x1/2 (12)	162A3041	162A3051OM3	162A3051OM4
SC-Duplex / 18 Ch / 36 F / 3x1/2	162A3080	162A3090OM3	162A3090OM4
SC-Duplex / 24 Ch / 48 F / 4x1/2	162A3081	162A3091OM3	162A3091OM4

SMAP 19" 3HU Splice-Panels			
coupler type/number of channels /fibers/number of PFP type	for fiber type		
	Singlemode E9/125µm	Multimode OM3 G50/125µm	Multimode OM4 G50/125µm
MU-Duplex / 144 Ch / 288 F / 6x1/2	163A3100	163A3110OM3	163A3110OM4
LC-Duplex / 64 Ch / 128 F / 8x1/3	163A3020	163A3030OM3	163A3030OM4
LC-Duplex / 72 Ch / 144 F / 6x1/2 (12)	163A3040	163A3050OM3	163A3050OM4
SC-Duplex / 32 Ch / 64 F / 8x1/3	163A3060	163A3070OM3	163A3070OM4
SC-Duplex / 36 Ch / 72 F / 6x1/2	163A3080	163A3090OM3	163A3090OM4

On request our 4HU SMAP panels are deliverable as splice panels as well. But we can not recommend this, because the high number of fibers within the panel are not secure to handle whilst installation and splicing.

While ordering, our inside sales department will ask if you like to order the SMAP Splice-Panels with our „factory assembled splice cassettes“ (1), if you have demand for splice-protectors and splice-holders and for the size and number of the PG cable glands you might need.

## SMAP Smart Panel - modular 19" Panel system

### SMAP 19" Empty Panels

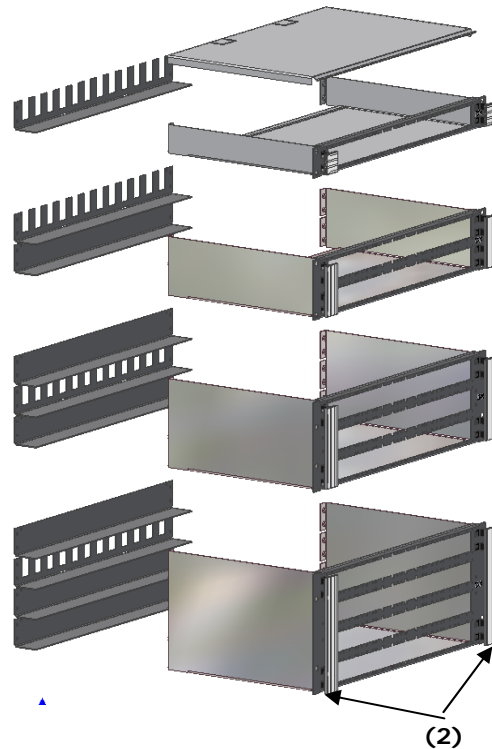
Empty Panels and single part front plates or MTP®-Modules should only be ordered separately for ready assembling on-site in really necessary cases.

The administrative and logistic work, the allocation and unpacking of the single components on-site and the mounting is very time-consuming and the tiny screws can get lost easily.

Thus order complete factory assembled panels with the partnumbers listed at the previous pages.

standard back plane configuration for  
max. 12 Cable-Dividers per Panel

other back plane configurations on  
request or can be ordered as single  
parts – please see page 12



#### SMAP 19" Empty Panels RAL9005 black partnumbers

1HU	161A0001
2HU	162A0001
3HU	163A0001
4HU	164A0001

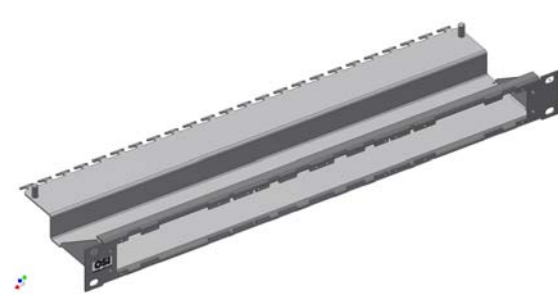
#### SMAP 19" 1HU Front-Tray-Plate empty RAL9005 black for assembling with coupler PFPs, as feedthrough front plate partnumbers

1HU	161A0007
-----	----------



#### SMAP 19" 1HU Tray empty RAL9005 black for assembling with coupler PFPs, as feedthrough panel partnumbers

1HU	161A5001
-----	----------



For the optional labelling fields for your individual panel addressing (2) please see page 12.

# SMAP Smart Panel - modular 19" Panel system

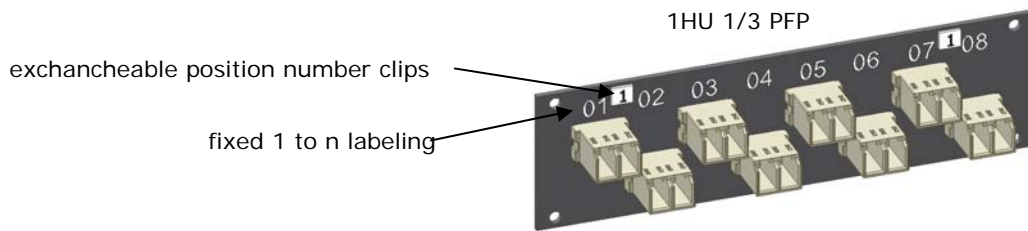
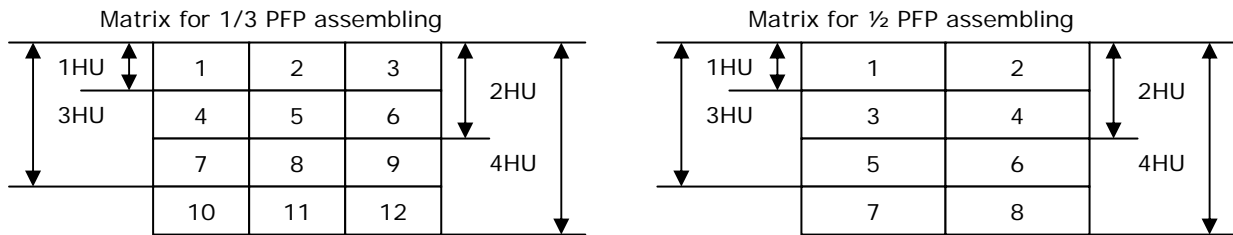
## SMAP Partfrontplates

The numbering of the part front plates PFP is a modular numerical matrix. The duplex channels have a fixed 1 to n labeling (n = number of channels per PFP), e.g. 1 to 8 as shown below on the 1/2 PFP with 8 LC-Duplex.

The PFPs are labelled with their position at the Panel by exchangeable number clips. For the PFP's positions at the Panel see the matrix diagram below.

e.g.: channel 3 – 4 means PFP number 3 and therein the channel number 4.

To fit in each position at the 1 to 4 HU Panels, the 1/3 PFPs are delivered with a 1 to 12 set of number clips and the 1/2 PFPs with a 1 to 8 set.

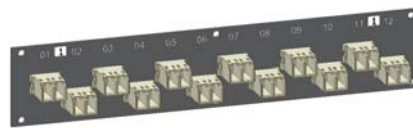


coupler type/ number of channels/fibers	for fiber type		
	Singlemode E9/125µm	Multimode OM3 G50/125µm	Multimode OM4 G50/125µm
1/3 Blind-PFP	160A0001		
MU-Duplex-H	only as 1/2 PFPs with reasonable numbers of channels possible, see below		
LC-Duplex / 8 Ch / 16 F	160A0090	160A0100OM3	160A0100OM4

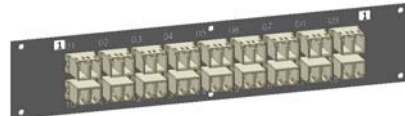
Deliverable with other connectivity systems on request.

1HU 1/2 PFP 12 LC-Duplex

1HU 1/2 PFP 24 MU-Duplex



1HU 1/2 PFP 18 LC-Duplex



1HU 1/2 PFP 12 LC-Quad



coupler type/ number of channels/fibers	for fiber type		
	Singlemode E9/125µm	Multimode OM3 G50/125µm	Multimode OM4 G50/125µm
1/2 Blind-PFP	160A0002		
MU-Duplex-H / 24 Ch / 48 F	160A0400	160A0410OM3	160A0410OM4
LC-Duplex / 12 Ch / 24 F	160A0120	160A0130OM3	160A0130OM4
LC-Quad / 12x2=24 Ch / 48 F	160A0430	160A0440OM3	160A0440OM4

Deliverable with other connectivity systems on request.

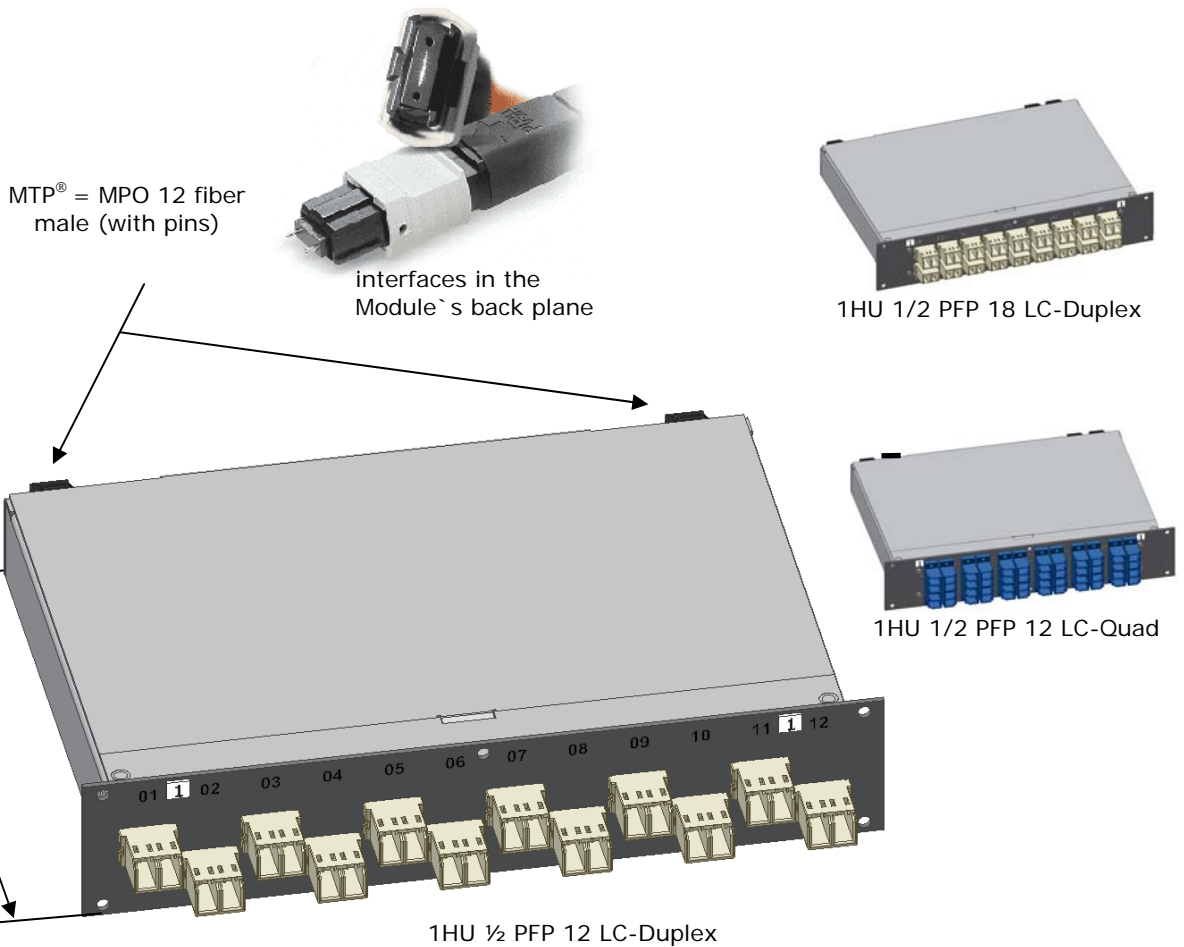
## SMAP Smart Panel - modular 19" Panel system

### SMAP MTP®-Modules

This panel has been developed for attachment of our PreCONNECT® HIGH-DENSITY Trunk Cables with their 12 fiber MTP® connectors. It is designed to separate the densely packed channels of the Trunk Cable's MTP® connectors into the patchfield's connectivity systems (e.g. LC-Duplex).

The light propagation within the Modules is uncrossed (unflipped), they are extensions of the crossed (flipped) MTP® Trunks and through this they maintain the crossover (flip) in the Trunk's duplex channels (A connects to B) within the duplex channels.

The MTP® connectors in the Module's back planes have pins (= male), the MTP® connectors of the PreCONNECT® HIGH-DENSITY Trunks are without pins (= female).



SMAP MTP®-Modules (with 12F MTP®) RAL9005 black partnumbers			
front coupler type and number of channels - number of MTPs in the back plane	for fiber type		
	Singlemode E9/125µm	Multimode OM3 G50/125µm	Multimode OM4 G50/125µm
LC-Duplex 12K (24F) – 2 MTP	160A1300	160A1305OM3	160A1305OM4
LC-Duplex 18K (36F) – 3 MTP	160A1301	160A1306OM3	160A1306OM4
LC-Quad 24Ch (48F) – 4 MTP	160A1302	160A1307OM3	160A1307OM4

Deliverable with other connectivity systems on request.

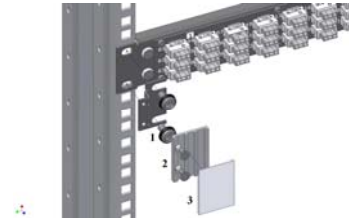
## SMAP Smart Panel - modular 19" Panel system

### SMAP Accessories

#### SMAP labeling fields partnumbers

1 labeling field with the necessary mounting material and assembly instructions, mountable on left and right side

For 1 HU Panel	161A0002
For 2 HU Panel	162A0002
For 3 HU Panel	163A0002
For 4 HU Panel	164A0002



#### SMAP 1HU Patchcord Guide partnumbers

To guide and fix Patchcords per height unit HU to both sides.

Through its radius shape the Patchcord Guide avoids too narrow, attenuation causing cable bending and through its Velcro strip proper strain relief of the Patchcords to avoid high side load at the connectors and it gives arrangement and overview in the Patchfield.

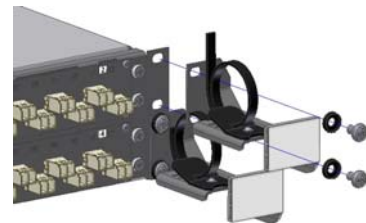
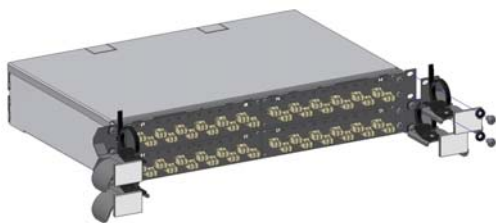
The example below shows a 2HU Panel with two left and two right Patchcord Guides.

Our Smart Plug Panels have the necessary holes in both sides of their 19" front-frames to mount the Patchcord Guides. The System fits into 600mm wide cabinets and racks.

To guide Patchcords to the top, the Patchcord Guides can be mounted side-inverted.

The sets listed containing one left and one right 1HU Patchcord Guide per height unit HU, with mounted labelling fields and Velcro strips and enclosed M6 screws and cage nuts. What means complete sets for the corresponding panel height HU.

For 1 HU Panel	161A0006
For 2 HU Panel	162A0006
For 3 HU Panel	163A0006
For 4 HU Panel	164A0006



#### SMAP front labelling stripes partnumbers

If the standard matrix labelling, as described at page 10, is not appropriate, but instead of it a 1 to n numbering is needed. Own labelling stripes can be inlayed as well.

The sets listed containing of the plastic labelling field carriers, the number-stripes and the needed screws.

**!!! The labelling stripes doesn't fit at fronts with MU-Duplex, SC-Duplex and LC-Quad**

For 1/3 PFP front 1 to 24 (3 stripes)	160A1523
For 1/2 PFP front 1 to 24 (2 stripes)	160A1538

Other sets, e.g. 1 to 48 for 2HU Panel etc. on request



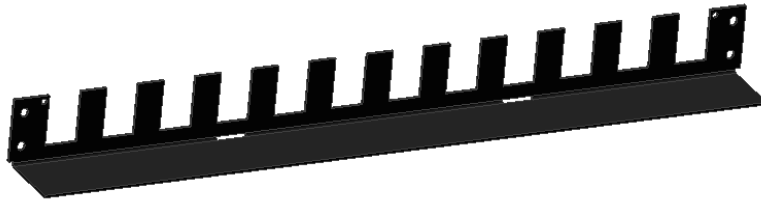
## SMAP Smart Panel - modular 19" Panel system

### SMAP Accessories

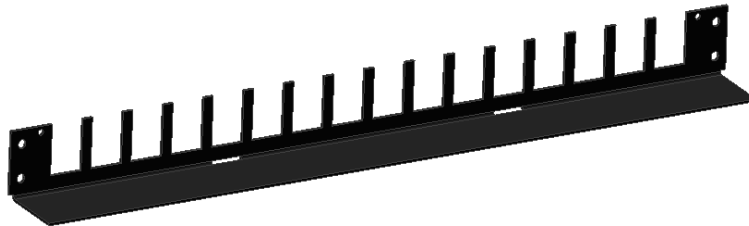
SMAP Panel back plane Blind RAL9005 black  
partnumber 160A1501



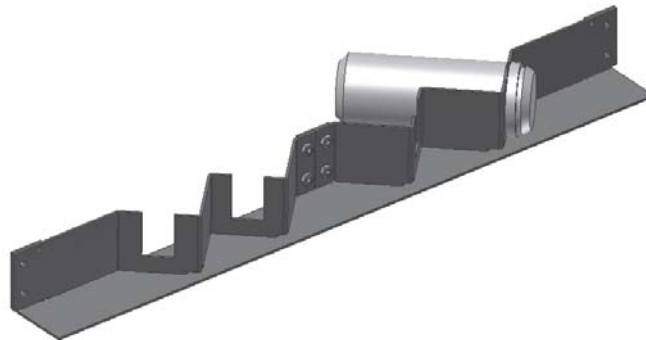
SMAP Panel back plane with 12 PreCONNECT® squared interfaces RAL9005 black  
partnumber 160A1502



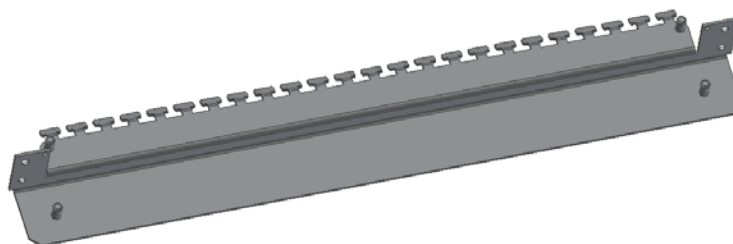
SMAP Panel back plane with 16 PreCONNECT® squared interfaces RAL9005 black  
partnumber 160A1503



SMAP Panel back plane Z-blade with 4 PreCONNECT® squared interfaces RAL9005 black  
partnumber 160A1512



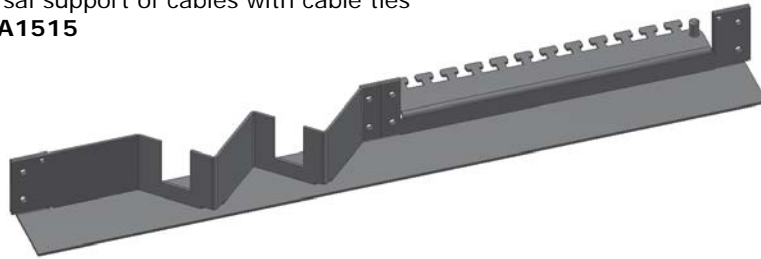
SMAP Panel back plane for universal support of cables with cable ties RAL9005 black  
partnumber 160A1507



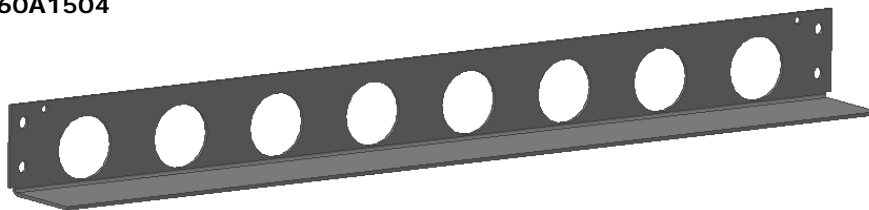
## SMAP Smart Panel - modular 19" Panel system

### SMAP Accessories

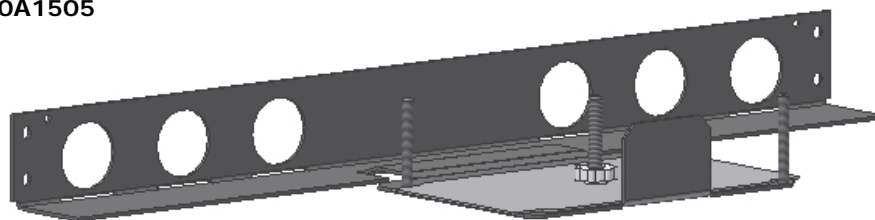
**Panel back plane for mixed FO and Copper cabling RAL9005 black**  
 on the left Z-blade with 2 PreCONNECT® squared interfaces  
 on the right universal support of cables with cable ties  
**partnumber 160A1515**



**Panel back plane with 8 Ø 29mm holes suitable for PG21 cable glands RAL9005 black**  
**partnumber 160A1504**

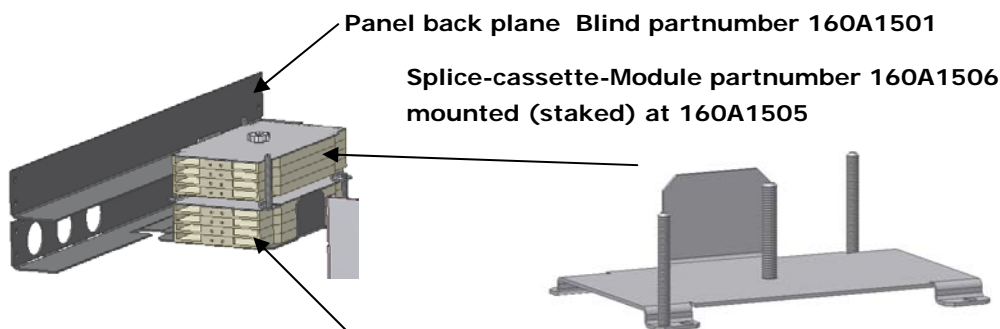


**Panel back plane for Splice-Panels RAL9005 black**  
 with 6 Ø 29mm holes suitable for PG21 cable glands  
 and support for 4 standard splice cassettes, with splice cassette cover  
**partnumber 160A1505**



**Splice-Cassette-Modul RAL9005 black, partnumber 160A1506**  
 for mounting (stacking) at „Panel back plane for Splice-Panels“ 160A1505 in panels higher than 1HU  
 Capacity for 4 standard splice cassettes, without splice cassette cover, cover is included in 160A1505

**Example: 8 splice cassettes for 2HU Panel**

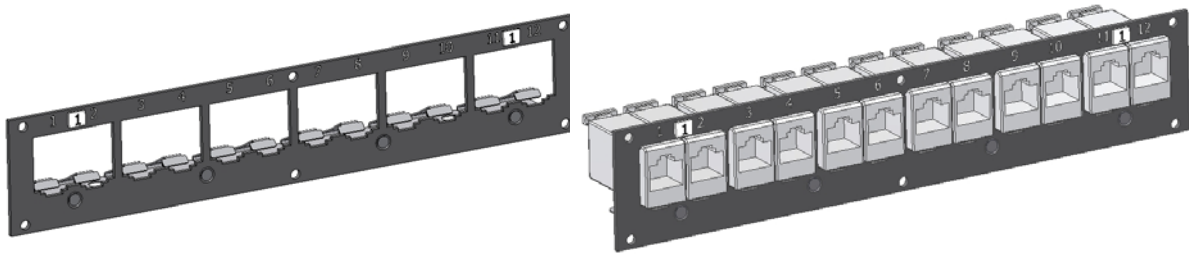


**Panel back plane for Splice-Panels partnumber 160A1505 like shown above**

## SMAP Smart Panel - modular 19" Panel system

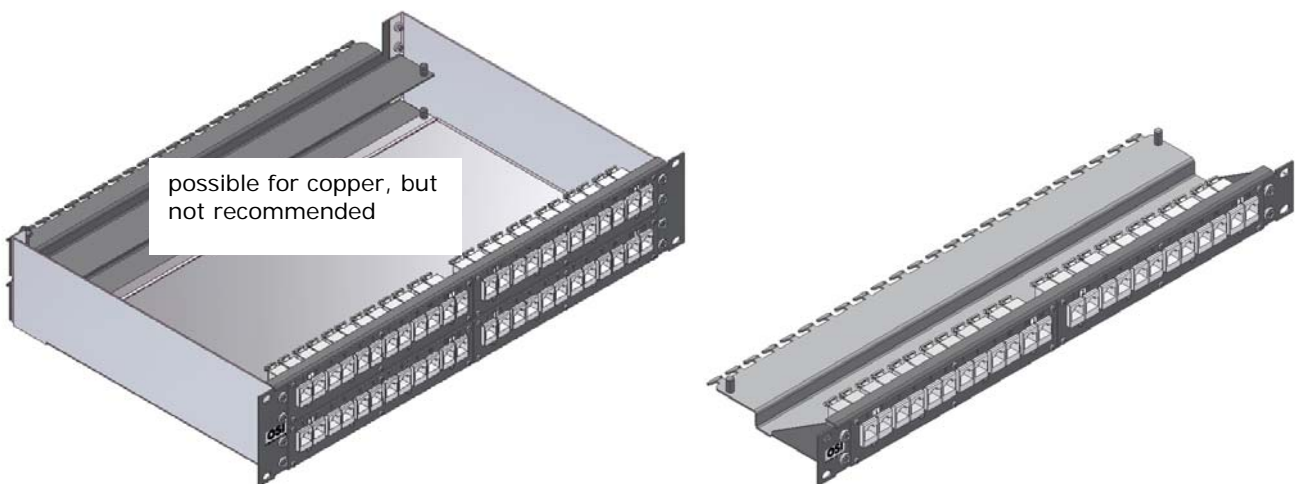
### SMAP 19" Panels for Copper Data Cables

To get our SMAP front design uniform for both transmission medias FO and copper cables in a single distributor, we developed the ½ PFP like shown here to support diverse Copper-Modules. For this please see our product information PreCONNECT COPPER „DS\_Prodinfo\_Cu-Trunk“.



Diverse copper PFPs can be mounted in standard or modified closed SMAP 19" Panels like shown, but for this the displayed panel back plane part to insert and fix the single copper cables is necessary.

This solution is just suggestive, respectively necessary if FO and copper cables should be installed next to e.o. in a single panel. We recommend to install FO and copper data cables separate to each other. FO in closed Panels and copper like usual in such open 1HU Trays like shown below.



The open 1HU Tray with correspondent FO PFPs is perfectly suitable for installation of single FO duplex cables like e.g. in FTTH installations as well.

More information and part numbers on request.