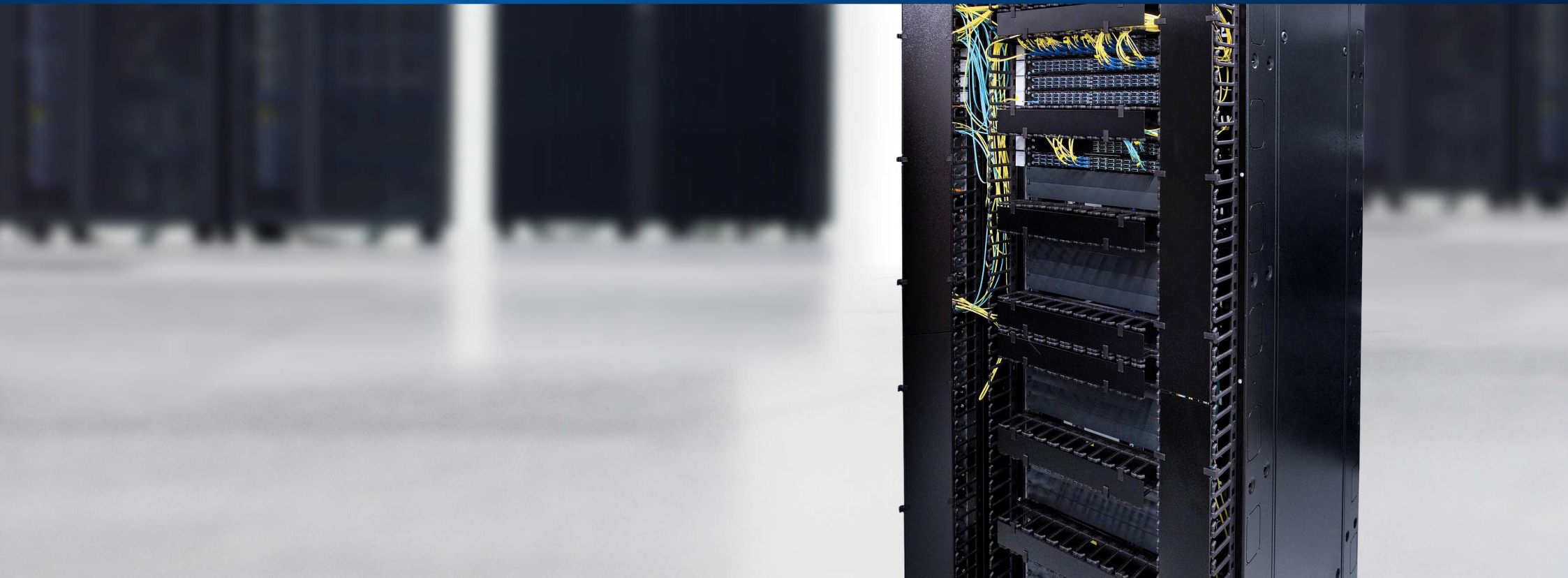


Data Center Patch Location Rack “DC-PLR”

PRODUCT INFORMATION



Data Center Patch Location Rack “DC-PLR”

Our new Data Center Patch Location Rack „DC-PLR“ is the consequent further development of our well established „Data-Center-Rack“.

With its Cable Management System it perfectly meets the requirements of highest density in passive Data Center Patch Locations.

Within the Cable Managers the large cable volumes of High-Density Patchlocations can be professionally routed and the cable overlength stored.

The OSI „DC-PLR“ is based upon the new, innovative rack system „NETcell“ from APRANET.

„NETcell“ is a server rack system with all state of the art properties and accessories like aisle containment, power supply, cooling, ect.

Hence our „DC-PLR“ is based upon „NETcell“, both can be combined.



Data Center Patch Location Rack “DC-PLR”



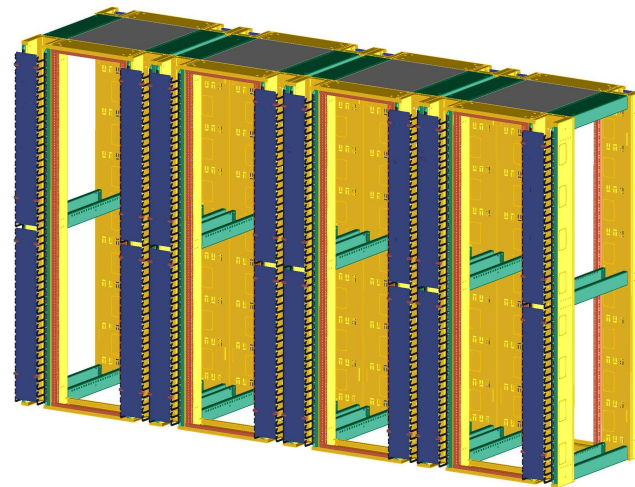
**Best Practise DC High-Density Patch Location
built of former OSI „Data-Center-Rack“**

Such a Patch Location is characterized by a barrier-free Cable Management System.

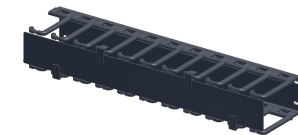
The four vertical Cable Managers are the basic pillars of the rack, so there are no traditional rack pillars disrupting the cable routing.

This construction is the real innovation compared to common rack systems.

Patchcords can be routed through the entire rack row through the horizontal 19“ Cable Managers easily.



**Row of four „DC-PLR“ Basis-Racks
front view**



**19“ 2HU
Horizontal Cable Manager
Partnumber: 111A0458**

Data Center Patch Location Rack “DC-PLR”

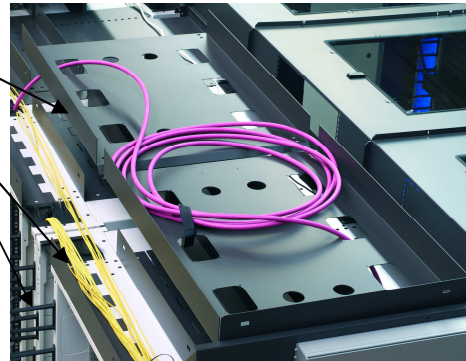
DC-PLR Basic-Rack 19” 46HU, width 900, depth 900

Partnumber RAL9005 black: 142A3000

Cable-Overlength-Storage for rack roof

Cable-Guides for rack roof

➔ no separate cable tray system needed



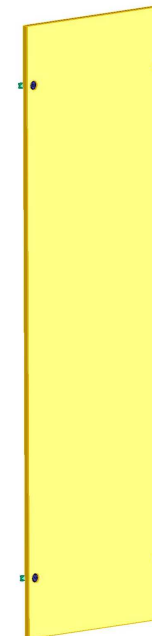
Data Center Patch Location Rack “DC-PLR”

Brushes at
Cable Manager entries
at bottom and roof



modular roof
included in the
Basis-Rack

Side-Wall
Partnumber: 142A3001



Cable-Guide for
Rack Base
Partnumber: 142A3006

Rack front with OSI Cable
Manager fingers and two-parts
cover.

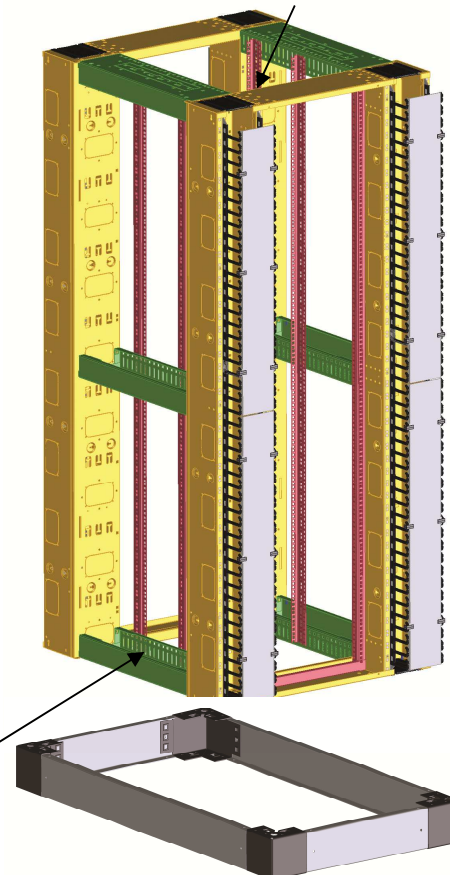
Cable Managers at rear side
without fingers, only with cover.

Cable Managers with large
space and many perforations to
lead cable between front and
rear side. Edge protectors for
feedthrough holes see acces-
sories.

19" 2HU
Horizontal Cable Manager
Partnumber: 111A0458



four 19" mounting-rails



Conduits, which are the hori-
zontal crossbars and lead
cable between front and
rear side.

Basis-Rack Base
Partnumber: 142A3005

Data Center Patch Location Rack “DC-PLR”

DC-PLR Intermediate-Rack 19“ 46HU, width 600, depth variable, Partnumber RAL9005 black: 142A3007

To build rack rows with an uneven number of racks

The only 600mm width, depth variable Intermediate-Rack has no vertical Cable Managers. Usually it is sufficient to mount such Intermediate-Racks between DC-PLR Basic-Racks to build rack rows with uneven numbers of racks.

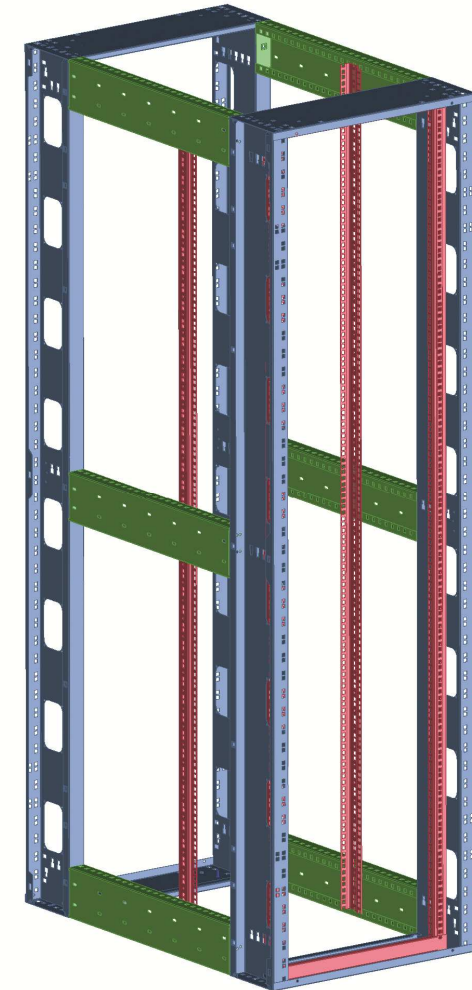
Thus there are not two vertical Cable Managers of Basic-Racks next to each other, but between the racks there is only one vertical Cable Manager, which shortens the length of the rack row and reduces costs.

The space of the vertical Cable Managers of the Basic-Racks is mostly enough to store the half of the cables of the racks on its left and right.

Intermediate-Rack accessories:

- Cable-Overlength-Storage for rack roof
- Cable-Guides for rack roof
- Base
- Cable-Guides for Base

Partnumbers: see accessories



Data Center Patch Location Rack “DC-PLR”

Dimensions:

- Height: 46HU, total-height without Base and roof options 2130 mm
- Width: Basic-Rack 900 mm; Intermediate-Rack 600 mm
- Depth: 900 mm

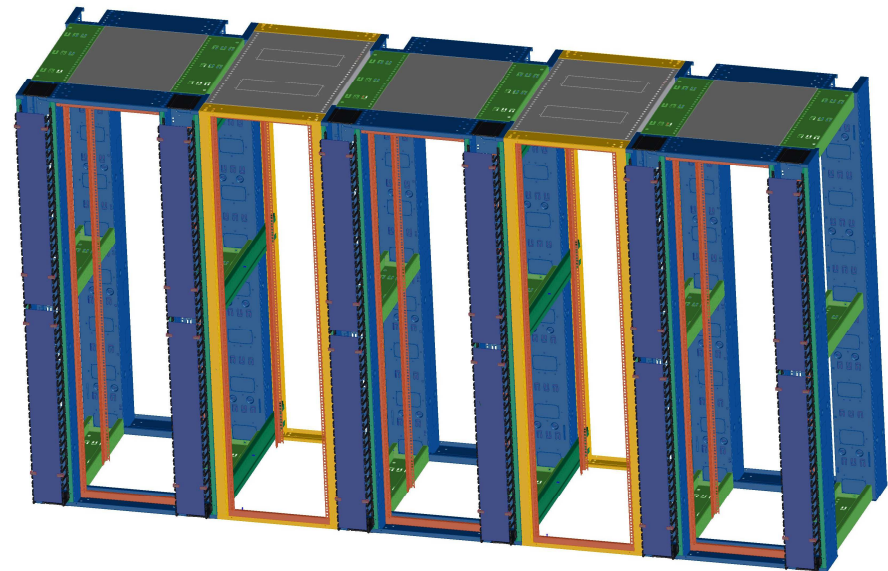
Color: RAL9005 black

Delivery form:

Mounted standing at a palett, incl. adjustable pedestals

total-height with palett and packaging = 2300 mm

“DC-PLR“ row of
three Basic-Racks and two Intermediate-Racks
front view

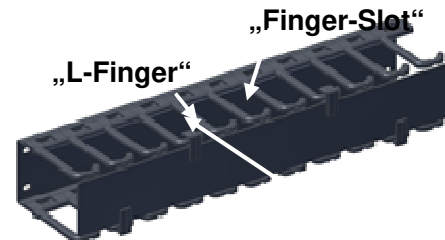


Data Center Patch Location Rack “DC-PLR”

Die OSI Cable Managers are particularly appropriate for FO cables through:

- 1.) The so-called „L-Fingers“, which are forming the „Finger-Slots“:
 - They are rounded all-over, without sharp edges.
 - They guarantee high bending and kinking protection for the cable even under tensile load.
 - They are very robust and break resistant.

- 2.) The large so-called „Finger-Slots“:
 - 1.) Therein the cables have lots of space and they are neither squeezed nor kinked.

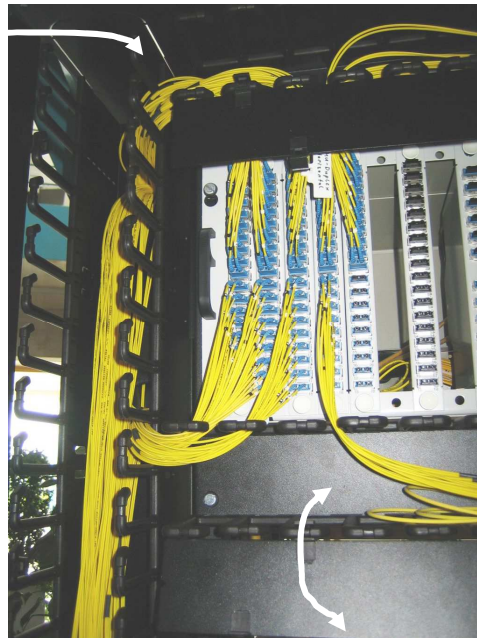


Data Center Patch Location Rack “DC-PLR”

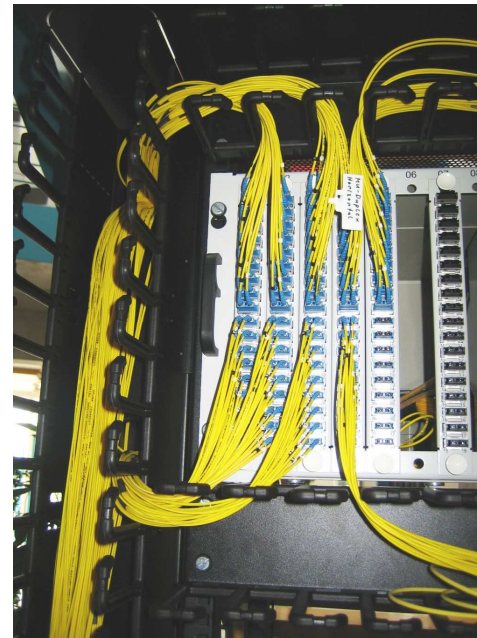
OSI Cable Manager are very installation and handling friendly through:

- 1.) The covers which are hinged in both directions and completely removable.
- 2.) The all-over rounded „L-Fingers“:
 - During installation and de-installation the cables cannot be damaged through sharp edges.
 - The cables can be installed and de-installed very easily and secure in the Cable Managers.
 - During operation with open or removed covers the „L-Fingers“ hold the cables back inside of the „Finger-Slots“, the cables cannot escape.
- 3.) The cable over-lengths are stored inside of especially suitable ducts at the rear sides of the Vertical Cable Managers.

hinged covers

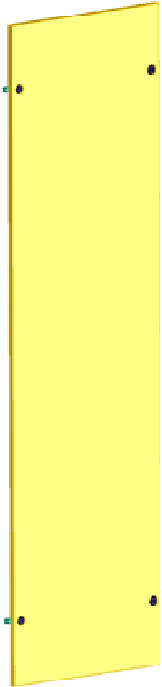
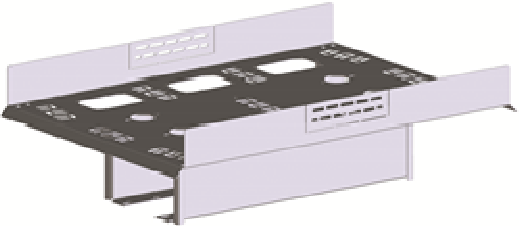


**removed covers
cables are kept inside of the „Finger-Slots“ by the „L-Fingers“**



Data Center Patch Location Rack “DC-PLR”

Accessories:

	Partnumber	
<p>Side Wall</p> <p>46HU for depth = 900mm RAL9005 black</p>	142A3001	
<p>Cable-Overlength-Storage for roof</p> <p>RAL 9005 black</p>	<p>For Basic-Rack: 142A3003</p> <p>For Intermediate-Rack: 142A3008</p>	

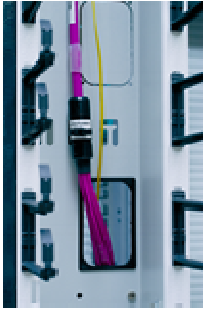
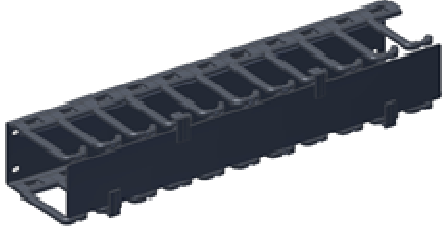
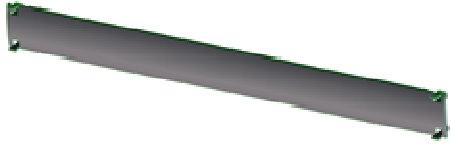
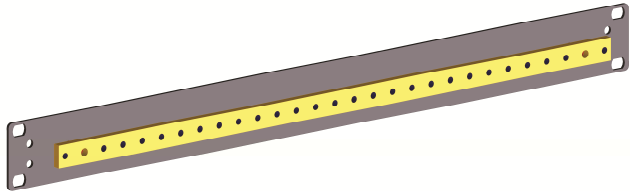
Data Center Patch Location Rack “DC-PLR”

Accessories:

	Partnumber	
<p>Side-Wall of Cable-Overlength Storage for roof</p> <p>RAL9005 black</p>	142A3004	
<p>Cable-Guides</p> <p>for roof fitting at Basic-Rack and Intermediate-Rack RAL9005 black</p>	142A3002	
<p>Cable-Bridge</p> <p>to route cable between rack rows on request</p>	142A3011	
<p>Base</p> <p>height = 100mm, RAL9005 black</p>	<p>For Basic-Rack: 142A3005</p> <p>For Intermediate-Rack: 142A3010</p>	
<p>Cable Guide</p> <p>for Base fitting at Basic-Rack and Intermediate-Rack, RAL9005 black</p>	142A3006	

Data Center Patch Location Rack “DC-PLR”

Accessories:

	Partnumber	
<p>Edge protectors</p> <p>for Cable Manager feedthrough holes Set comprising 10 pcs. RAL9005 black</p>	142A3014	
<p>19“ 2HU Horizontal Cable Manager</p> <p>RAL9005 black</p> <p>Other Height Units on request</p>	111A0458	
<p>19“ 1HU Blindplate</p> <p>Set comprising 10 pcs. RAL7016 anthracite gray</p>	142A3012	
<p>Grounding Busbar</p> <p>19“ 1HU / 27 x M5</p>	142A3013	

Data Center Patch Location Rack “DC-PLR”

Accessories:

	Partnumber	
<p>19“ (482mm) C-Rail</p> <p>Steel zinc plated, appropriate for the T-root cable clamps below, PU = 4 pcs. Incl. cage nuts and screws</p>	142A0500	
<p>Cable clamps</p> <p>(type T-root) appropriate for the C-Rail above, steel zinc plated PU = 8 pcs.</p>	<p>For cable diameter 30 to 34 mm: 142A0503</p> <p>For cable diameter 18 to 22 mm: 142A0508</p>	
<p>Cage nuts</p> <p>for 19“ profile rails, steel zinc plated, without contacting, PU = 50 pcs.</p>	<p>M5: 142A0501</p> <p>M6: 142A0507</p>	

Data Center Patch Location Rack “DC-PLR”

Accessories:

	Partnumber	
<p>Screws with cross slot, steel zinc plated with black plastic washer PU = 100 pcs.</p>	<p>M5: 142A0502 M6: 142A0506</p>	
<p>19“/2HE Document-Drawer RAL 9005 black</p>	<p>142A0511</p>	
<p>Radius limiter for cable manager Radius r=35mm</p>	<p>142A0523</p>	

About Rosenberger OSI:

Since 1991, Rosenberger Optical Solutions & Infrastructure (Rosenberger OSI) has been an expert in innovative fiber optic cabling infrastructure and service solutions for Data Centers, Local Networks, Telecom and Industrial.

The products and services can be found wherever largest amounts of data have to be transferred quickly and securely. In addition to the development and production of a broad portfolio of fiber optic and copper cabling systems, Rosenberger OSI also offers a variety of services such as planning, installation and maintenance of cabling infrastructure. Rosenberger OSI has been a part of the globally operating Rosenberger Group since 1998, a worldwide leading provider of high-frequency-, high-voltage-, and fiber-optic-connection solutions headquartered in Germany.

For further information, please visit: www.rosenberger.com/osi

Rosenberger

Rosenberger-OSI GmbH & Co. OHG

Optical Solutions & Infrastructure | Endorferstr. 6 | 86167 Augsburg | Telephone: +49 821 24924-0
info-osi@rosenberger.com | www.rosenberger.com/osi

Rosenberger® is a registered trademark of Rosenberger Hochfrequenztechnik GmbH & Co. KG. All rights reserved. © Rosenberger 2017

For technical reasons, we reserve us the right to make any deviations from the illustrations in the product information
Transfer to third party only by authority of Rosenberger-OSI GmbH & Co. OHG- All rights reserved.

Creation date: 2011-05-23
Valid since: 2011-08-05
Revision: 006